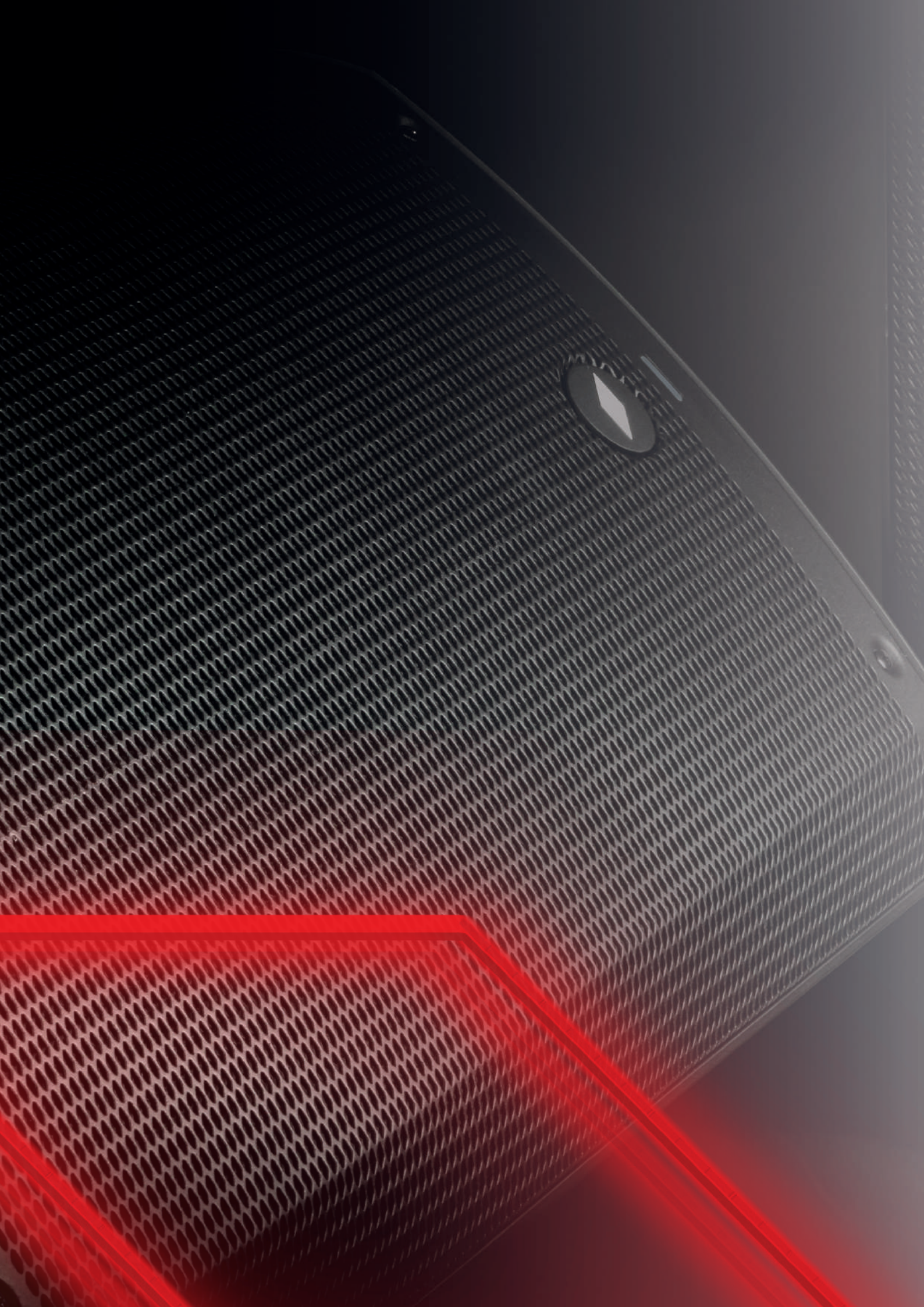




PROEL 
SOUND SYSTEMS



General Index

MIXER

- 04 **PLAYMIX** series
- 07 **MQ** series

STAGE GEAR

- 10 **D** series

POWER AMPLIFIERS

- 12 **DPX PFC** series

LOUDSPEAKERS

- 14 **V PLUS** series
- 18 **V WAVE** series
- 20 **V FREE** series
- 22 **U24** series
- 24 **DIVA** series
- 29 **FLASH** series
- 30 **LT** series
- 32 **LTX** series
- 40 **S** series
- 44 **WX** series
- 46 **WD** series

PORTABLE SYSTEMS

- 48 **SESSION** series
- 54 **FREE** series
- 56 **FREEPASS** series



PLAYMIX **SERIES**

PLAYMIX is a series of mixers created by PROEL to offer in a very compact and stylish package a high inputs density, a full set of features and a superior audio quality, at a very convenient price point.

PLAYMIX mixers are available in **3 models**, with the same channel and master functions, but offering 6, 8 or 10 inputs respectively. The mono MIC/LINE channels feature low-noise, high-headroom microphone preamps, **3-band EQ with sweep MIDs and HPF**, and 60mm control faders, for a full control of your sound. All models feature an advanced DIGITAL section with **LCD display**, including:

- A high-quality **24-bit built-in DSP with 100 studio-grade presets** of single and combined effect (REVERBS, DELAYS, MODULATIONS)
- A **48KHz stereo USB audio interface** for playing/recording thru PC connection
- A built-in MP3 player from USB memory key or **BLUETOOTH interface**
- On-the-go stereo recording on USB memory key

Carefully designed and engineered in Italy by PROEL, PLAYMIX mixers are hosted in rugged cases, providing extended durability for a stage-proof use and they offer in an ultra-compact format the performance of professional consoles, delivering a clean and accurate sound for a wide range of applications.



PLAYMIX6 **NEW**

- 2 MIC/LINE IN with PAD
- 2 STEREO IN
- 24-bit built-in DSP with 99 presets of REVERBS, DELAYS, MODULATIONS
- 48KHz stereo USB audio interface
- Built-in MP3 player/recorder and BLUETOOTH interface
- 3-band EQ with sweep mid and LOW CUT
- 60mm fader
- FX/AUX send
- XLR MAIN MIX outputs
- 5V power supply USB bus



High-headroom,
low-noise MIC
preamps



PLAYMIX8 **NEW**

- 4 MIC/LINE IN with PAD
- 2 STEREO IN
- 24-bit built-in DSP with 99 presets of REVERBS, DELAYS, MODULATIONS
- 48KHz stereo USB audio interface
- Built-in MP3 player/recorder and BLUETOOTH interface
- 3-band EQ with sweep mid and LOW CUT
- 60mm fader
- FX/AUX send
- XLR MAIN MIX outputs
- 5V power supply USB bus



XLR MAIN MIX outputs
and independent C.ROOM



24bit digital effect
with 100 presets
and multimedia
PLAYER/RECORDER

PLAYMIX10 NEW

- 6 MIC/LINE IN with PAD
- 2 STEREO IN
- 24-bit built-in DSP with 99 presets of REVERBS, DELAYS, MODULATIONS
- 48KHz stereo USB audio interface
- Built-in MP3 player/recorder and BLUETOOTH interface
- 3-band EQ with sweep mid and LOW CUT
- 60mm fader
- FX/AUX send
- XLR MAIN MIX outputs
- 5V power supply USB bus

| | PLAYMI6 | PLAYMI8 | PLAYMI10 |
|---------------------------------|--|--|------------------|
| MONO INPUT CHANNEL | | | |
| Mic Input | sensitivity impedance | from -10 to -45 dB Balanced XLR-F 1 Kohm | |
| Line Input | sensitivity impedance | from +20 to -15 dB Balanced JACK 20 Kohm | |
| Lo cut | | 80Hz, 6dB/oct. | |
| EQ | HIGH (shelving) MID (peaking) LOW (shelving) | ±15 dB @ 12K Hz ±12 dB @ 250-6K Hz ±15 dB @ 80 Hz | |
| STEREO INPUT CHANNEL | | | |
| Line Input | sensitivity impedance | from +12 to -15 dB Balanced JACK 20 Kohm Stereo Mini JACK | |
| MASTER SECTION | | | |
| MAIN MIX | nom. out level | +4 dBu Unbalanced XLR-M | |
| C. ROOM output | nom. out level | +4 dBu Unbalanced JACK | |
| SEND output | nom. out level | +4 dBu Unbalanced JACK | |
| HEADPHONES | min. impedance | 64 ohm Stereo JACK | |
| Bluetooth | | Version 5.0, Audio Streaming | |
| USB Audio Interface | | Stereo IN/OUT, 16-bit converter 44.1 KHz (PENDRIVE) / 48 KHz (PC) sample rate Type A | |
| DIGITAL EFFECT PROCESSOR | | | |
| Effects | | 100 presets | |
| A/D and D/A converters | | 24 bit | |
| DSP resolution | | 24 bit | |
| Controls | | 2-DIGIT display, DIAL, LEVEL | |
| GENERAL SPECIFICATIONS | | | |
| Maximum level | | all outputs +15 dBu | |
| Crosstalk | | meas. at 1 KHz > 75 dB | |
| HUM & Noise | | unweighted < 90 dB | |
| THD + Noise | | at +4dB, 1kHz < 0,009 % | |
| Dimensions (WxHxD) | 247 x 274 x 61 mm | 331 x 274 x 61 mm | 415x 274 x 61 mm |
| Weight | 1,80 kg | 2,50 kg | 3,00 kg |
| POWER REQUIREMENTS | | | |
| Supply | | use only supplied AC/DC ADAPTER 5VDC 1A | |
| Mains Supply Voltage | | 100-240 VAC (±10%) 50/60 Hz | |
| Consumption | | 15W | |



MQ SERIES



MQ12USB

- Compact 12-input 4-bus mixer with effect and USB I/F
- 4 MONO MIC/LINE inputs, 2 STEREO MIC/LINE inputs and 2 STEREO LINE inputs
- 6 low-noise, very high-headroom microphone preamplifiers
- PHANTOM power
- 'One-knob' COMPRESSOR with LED indicator on MONO channels
- 3-band EQ with sweep mids and LO-CUT filter
- 1 AUX send pre-fader and 1 AUX send post-fader
- 24bit studio-grade digital effect with 100 presets, 2-digit display and footswitch MUTE
- Built-in USB interface for PC recording and playback
- GROUPS 1&2 with MIX routing and output
- HEADPHONES and CONTROL ROOM outputs
- Electronically balanced MAIN MIX outputs with XLR-M and 1/4" JACK connectors
- Two 8-LED VU-METERS
- Universal switching built-in power supply
- Applications: small live bands (3 to 5 people), home and multimedia applications, rehearsal rooms, small fixed installations



One-knob intelligent
COMPRESSORS

OPTIONAL ACCESSORIES

BAGMQ12FX



Padded bag

RACKMQ12USB



Adapter for rack



USB interface with routing options for PC recording and playback

OPTIONAL ACCESSORIES

BAGMQ16FX



Padded bag

RACKMQ16USB



Adapter for rack

MQ16USB

- Compact 16-input 4-bus mixer with effect and USB I/F
- 8 MONO MIC/LINE inputs and 4 STEREO MIC/LINE inputs
- 12 low-noise, very high-headroom microphone preamplifiers
- PHANTOM power
- 'One-knob' COMPRESSOR with LED indicator on MONO channels
- 3-band EQ with sweep mids and LO-CUT filter
- 3 AUX sends pre-fader e 1 AUX send post-fader
- 24bit studio-grade digital effect with 100 presets, 2-digit display and footswitch MUTE
- Built-in USB interface with routing options for PC recording and playback
- GROUPS 1&2 with MIX routing and output
- 2-TRACK, HEADPHONES and CONTROL ROOM outputs
- Electronically balanced MAIN MIX outputs with XLR-M and ¼" JACK connectors
- Two 12-LED VU-METERS
- Universal switching built-in power supply
- Applications: full live bands, home and multimedia applications, rehearsal rooms, fixed installations



| | | MQ12USB | MQ16USB | Connectors |
|---|-----------------|---|---|----------------|
| MONO INPUT CHANNEL | | | | |
| Mic Input | sensitivity | from -10 to -50 dB | from -10 to -50 dB | Balanced XLR-F |
| | impedance | 2 Kohm | 2 Kohm | |
| Line Input | sensitivity | from +20 to -20 dB | from +20 to -20 dB | Balanced JACK |
| | impedance | 10 Kohm | 10 Kohm | |
| Lo cut | | 75Hz, 18dB/oct. | 75Hz, 18dB/oct. | |
| EQ | HIGH (shelving) | ±15 dB @ 12KHz | ±15 dB @ 12KHz | |
| | MID (peaking) | ±15 dB @ 2.5KHz | ±15 dB from 100 Hz to 8 kHz | |
| | LOW (shelving) | ±15 dB @ 80Hz | ±15 dB @ 80Hz | |
| Compressor | | CH 1-4, 1-knob | CH 1-8, 1-knob | |
| STEREO INPUT CHANNEL | | | | |
| Mic Input | sensitivity | from -10 to -50 dB | from -10 to -50 dB | Balanced JACK |
| | impedance | 2 Kohm | 2 Kohm | |
| Line Input | sensitivity | from +20 to -20 dB | from +20 to -20 dB | Balanced JACK |
| | impedance | 10 Kohm | 10 Kohm | |
| EQ | HIGH (shelving) | | ±15 dB @ 12KHz | |
| | MID (peaking) | | ±15 dB @ 2.5KHz | |
| | LOW (shelving) | | ±15 dB @ 80Hz | |
| MASTER SECTION | | | | |
| MAIN MIX | nom. out level | | +4 dB Balanced JACK and XLR-M | |
| C. ROOM output | nom. out level | | 0 dBu Unbalanced JACK | |
| GROUP output | nom. out level | | +4 dBu Unbalanced JACK | |
| FX/AUX output | nom. out level | | 0 dBu Unbalanced JACK | |
| 2TRK | nom. out level | | 0 dBu Unbalanced RCA | |
| | nom. in level | | 0 dBu Unbalanced RCA | |
| HEADPHONES | min. impedance | | 32 ohm | |
| | max. out level | | (2x) 193 mW Stereo JACK | |
| USB | | | Stereo IN/OUT, 16-bit converter, 48 KHz sample rate Type B | |
| DIGITAL EFFECT PROCESSOR (not available for MQ6) | | | | |
| Effects | | | 100 presets | |
| A/D and D/A converters | | | 24 bit | |
| DSP resolution | | | 24 bit | |
| Controls | | | 2-DIGIT display, DIAL, PEAK LED, MUTE switch, MUTE footswitch | |
| GENERAL SPECIFICATIONS | | | | |
| Maximum level | all outputs | | +22 dBu | |
| Crosstalk | meas. at 1 KHz | | >82 dBu | |
| HUM & Noise | unweighted | | < -93 dBu | |
| THD + Noise | at +4dB, 1kHz | | <0.008 % | |
| Dimensions (WxHxD) | | 346 x 355 x 95 mm | 481 x 432 x 104 mm | |
| Weight | | 4.50 kg | 6.50 kg | |
| POWER REQUIREMENTS | | | | |
| Supply | | | | |
| Mains Supply Voltage: | | 110-240 VAC (±10%) 50 / 60 Hz available with EU, US or UK mains cord | 110-240 VAC (±10%) 50 / 60 Hz available with EU, US or UK mains cord | |
| Consumption | | 35 W | 35 W | |



4
YEARS
WARRANTY

2 years standard warranty
+ 2 years extended warranty

PROEL

The product is covered by the registered on the website www.proel.com within 6 months from the date of purchase.

STAGE GEAR **SERIES**

DI Boxes perform several important functions: they are designed for impedance matching and balancing the signal of a guitar, a keyboard or any line-level output source, and for injecting directly the signal with very long connections to the XLR microphone inputs of a mixing console.

D10P

Passive direct box with transformer does not require any external power such as phantom power or batteries to work. The advantage of a transformer is the possibility to avoid any electrical connection between the sound source and the mixer. This provides two huge benefits: with no electrical path, ground loops are eliminated and the cancellation of common-mode noise, like hum, is possible.



D10A

Active direct box with transformer requires the phantom power to work. The advantage of a transformer is the possibility to avoid any electrical connection between the sound source and the mixer. This provides two huge benefits: with no electrical path, ground loops are eliminated and the cancellation of common-mode noise, like hum, is possible. The advantage of active instead of passive DIBOX is null insertion loss and less output hum and noise.



D20P

STEREO passive direct box with transformers does not require any external power such as phantom power or batteries to work. The advantage of a transformer is the possibility to avoid any electrical connection between the sound source and the mixer. This provides two huge benefits: with no electrical path, ground loops are eliminated and the cancellation of common-mode noise, like hum, is possible. D20P features two 1/4" jack to connect a stereo keyboard, or two RCA to connect a DJ console, or a 3,5mm mini-jack to connect a personal computer, for maximum flexibility without the need of special adapters.





DPX PFC SERIES

DPX PFC is a series of **ultra-lightweight** power amplifiers able to provide, for professional mobile and fixed PA systems, a huge amount of power and the **maximum performance and portability in a very affordable package**.

Thanks to the **high-density Class D technology** employed in the output stages, we've been able to build very powerful amplifiers in an ultra-compact and lightweight package. The extremely efficient **Switch Mode Power Supply (SMPS) with Power Factor Correction technology (PFC)** helps to reduce further the weight and provides universal mains operation, delivering constant energy to the loudspeakers regardless of the AC line voltage fluctuations and eliminating the need for market specific power supplies and related reliability issues.

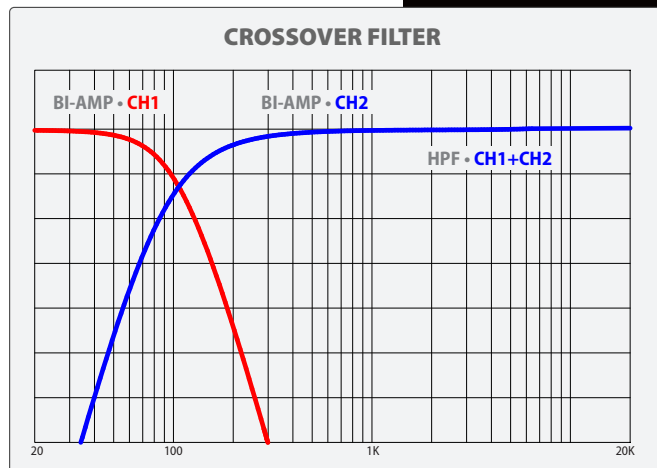
All models feature a **built-in 24dB/octave stereo crossover** with BI-AMP and HIGH-PASS options, for easily filtering a 2-way system without the need of additional outboard. Fast-attack precise CLIP LIMITERS guarantee maximum output without distortion, while a comprehensive protection system safeguards both the speakers and the amplifier.

The electronics is hosted in a **feather-light all-aluminum case**, able to provide an efficient cooling and, at the same time, protection and durability over the years.

DPX PFC are power amplifiers offering extraordinary value to professional entertainers, DJ and sound engineers looking for **massive output, excellent performance** and **absolute portability**.



- High-density Class D technology
- Very efficient Switch Mode Power Supply (SMPS) with PFC
- Built-in 24dB/octave stereo crossover
- Extensive protection system for maximum reliability
- Integrated fast-attack CLIP LIMITERS
- Precise 8-segment LED ladders
- FRONT-TO-BACK cooling system with variable speed fan
- Ultra-lightweight all-aluminum chassis
- TOTAL WEIGHT less than 5kg



| | DPX1200PFC | DPX1700PFC | DPX2500PFC |
|--|--|-----------------|-----------------|
| Power 8 ohm* | 350 | 500 | 650 |
| Power 4 ohm** | 600 | 850 | 1250 |
| Power BRIDGE 8 ohm** | 1200 | 1700 | 2500 |
| * W RMS per channel, both channel driven, 1KHz THD 1%, ** 40ms burst | | | |
| Output Stage | Class D | | |
| Frequency Response | 20 Hz - 20 kHz | | |
| Input Sensitivity | +2.2 dBu (1.0 Vrms) | | |
| Input Impedance | 20 kΩ balanced / 10 kΩ unbalanced | | |
| Damping Factor | > 500 @ 8 ohm | | |
| S/N Ratio (Unweighted) | > 100 dB | | |
| THD+N | < 0.15 % | | |
| Input Connectors | XLR F (INPUT), XLR F (LINK) | | |
| Output Connectors | NL4 SPEAKON | | |
| Controls | INPUT LEVEL, STEREO/BRIDGE-PARALLEL, FLAT/BI-AMP/HPF | | |
| HPF/BI-AMP filter | LR 24dB / Oct. @ 100 Hz | | |
| LED Indicators | 7-LED BAR (ON, LIMIT, PROTECTION, -5dB / -10dB / -20dB / -40dB SIGNAL) | | |
| Cooling | Variable speed DC fan, air flow from front to rear | | |
| Protections | AC low power, DC, thermal, short circuit, VHF, CLIP limiter | | |
| Power Supply | 100-240 VAC 50/60 Hz (±10%) | | |
| Dimensions (W x H x D) | 483 x 89 x 255 mm | | |
| Weight | 3.8 Kg (8.4 lb) | 3.8 Kg (8.4 lb) | 4.2 Kg (9.3 lb) |

DPX1200PFC
DPX1700PFC
DPX2500PFC



V PLUS series is the evolution of the acclaimed V series of PROEL powered loudspeakers delivering **absolute value** in terms of **performance, engineering** and design at a more affordable cost.

These **ultra-portable** speakers combine, in carefully engineered and light-weight cabinets, the clearest and most accurate **PROEL sound** with **Class D amplifier technology** and **Switch Mode Power Supply**, offering an unbeatable PA solution at its price point.

All the models feature an extremely efficient amplifier module capable of delivering **600 W or 400W** of robust power to the transducers. Thanks to the use of SMPS technology, this power comes in an **ultra-lightweight package**, making the V PLUS the **most portable PROEL speakers ever**. The



V PLUS **SERIES**

power module is hosted in a fully sealed aluminium box, which provides protection, perfect insulation of the cabinet from the outside and extremely efficient cooling.

Thanks to the carefully selected speakers and to the **sophisticated active electronics**, including dual CLIP LIMITERS for an undistorted sound even at the loudest level, the sound of the V PLUS has been precisely tuned in every details, in order to provide **unheard performance in this price range**. The V PLUS cabinets, expression of the most advanced **Italian design**, include a highly protective steel grille and a super-comfortable luggage-style top handle for an effortless portability. The slanted shape allows the speakers to be laid on their side and used also as stage monitors.



Ultra-lightweight, high-efficiency Class D power amplifiers with SMPS



Symmetrical 45° wedge angle for stage monitoring



Selectable MIC/LINE input with 2-band EQ

V8PLUS

- Bi-amplified 2-way system
- 1" high-definition neodymium compression driver on a wide-dispersion 90° x 60° constant coverage horn
- 8" long-excursion woofer with 1.5" voice coil
- 400 W total peak power amplifier
- SPL MAX 121 dB
- Frequency response 70 Hz - 20 kHz
- 7 kg TOTAL WEIGHT



V10PLUS

- Bi-amplified 2-way system
- 1" high-definition neodymium compression driver on a wide-dispersion 90° x 60° constant coverage horn
- 10" long-excursion woofer with 2" voice coil
- 600 W total peak power amplifier
- SPL MAX 123 dB
- Frequency response 60 Hz - 20 kHz
- 10 kg TOTAL WEIGHT



| | V8PLUS | V10PLUS |
|--------------------------------------|---|---|
| System type | 2-way vented enclosure | 2-way vented enclosure |
| High Frequency Device | 1" neodymium compression driver | 1" neodymium compression driver |
| Low Frequency Device | 8" woofer with 1.5" voice coil | 10" woofer with 2" voice coil |
| Angular Coverage | 90° H x 60° V | 90° H x 60° V |
| Total peak power | 400 W | 600 W |
| HF Amplifier Continuous Power | 50 W Class D | 50 W Class AB |
| LF Amplifier Continuous Power | 150 W Class D | 250 W Class D |
| Power Supply | SMPS | SMPS |
| Processing | Analog | Analog |
| Frequency Response | 70 Hz - 20 kHz | 60 Hz - 20 kHz |
| Max SPL | 121 | 123 |
| Connectors | IN: COMBO, LINK: XLR M | IN: COMBO, LINK: XLR M |
| Controls | LEVEL, LINE/MIC selector, LOW EQ, HIGH EQ, GND LIFT, FRONT LED selector | LEVEL, LINE/MIC selector, LOW EQ, HIGH EQ, GND LIFT, FRONT LED selector |
| Stage Monitor Angle | 45° | 45° |
| Flying System | 4 x M8 - top/bottom | 4 x M10 - top/bottom |
| Cabinet Material | Polypropylene | Polypropylene |
| Cabinet Colour | Black | Black |
| Handles | 1 x top | 1 x top |
| Pole Socket | 1 x bottom | 1 x bottom |
| Power Supply | 230 VAC or 120 VAC 50/60 Hz with LINE VOLTAGE selector | 230 VAC or 120 VAC 50/60 Hz with LINE VOLTAGE selector |
| Dimensions (W x H x D) | 280 x 422 x 252 mm | 330 x 512 x 280 mm |
| Weight | 7 kg | 10 kg |

V12PLUS

- Bi-amplified 2-way system
- 1" high-definition neodymium compression driver on a wide-dispersion 90° x 60° constant coverage horn
- 12" long-excursion woofer with 2.5" voice coil
- 600 W total peak power amplifier
- SPL MAX 124 dB
- Frequency response 60 Hz - 20 kHz
- 13 kg TOTAL WEIGHT



Ergonomic, ultra-comfortable top handle for an effortless transportation

V15PLUS

- Bi-amplified 2-way system
- 1" high-definition neodymium compression driver on a wide-dispersion 90° x 60° constant coverage horn
- 15" long-excursion woofer with 2.5" voice coil
- 600 W total peak power amplifier
- SPL MAX 126 dB
- Frequency response 50 Hz - 20 kHz
- 18 kg TOTAL WEIGHT



OPTIONAL ACCESSORIES

COVER8
COVER10

COVER12
COVER15



Cover for V8PLUS -V10PLUS
V12PLUS - V15PLUS

KPTV8
KPTV10

KPTV12
KPTV15



Brackets for V8PLUS -V10PLUS
-V12PLUS - V15PLUS

| | V12PLUS | V15PLUS |
|--------------------------------------|---|---|
| System type | 2-way vented enclosure | 2-way vented enclosure |
| High Frequency Device | 1" neodymium compression driver | 1" neodymium compression driver |
| Low Frequency Device | 12" woofer with 2.5" voice coil | 15" woofer with 2.5" VC |
| Angular Coverage | 90° H x 60° V | 90° H x 60° V |
| Total peak power | 600 W | 600 W |
| HF Amplifier Continuous Power | 50 W Class AB | 50 W Class AB |
| LF Amplifier Continuous Power | 250 W Class D | 250 W Class D |
| Power Supply | SMPS | SMPS |
| Processing | Analog | Analog |
| Frequency Response | 50 Hz - 20 kHz | 45 Hz - 20 kHz |
| Max SPL | 124 | 126 |
| Connectors | IN: COMBO, LINK: XLR M | IN: COMBO, LINK: XLR M |
| Controls | LEVEL, LINE/MIC selector, LOW EQ, HIGH EQ, GND LIFT, FRONT LED selector | LEVEL, LINE/MIC selector, LOW EQ, HIGH EQ, GND LIFT, FRONT LED selector |
| Stage Monitor Angle | 44° | 44° |
| Flying System | 4 x M10 - top/bottom | 4 x M10 - top/bottom |
| Cabinet Material | Polypropylene | Polypropylene |
| Cabinet Colour | Black | Black |
| Handles | 1 x top | 1 x top, 2 x sides |
| Pole Socket | 1 x bottom | 1 x bottom |
| Power Supply | 230 VAC or 120 VAC 50/60 Hz with LINE VOLTAGE selector | 230 VAC or 120 VAC 50/60 Hz with LINE VOLTAGE selector |
| Dimensions (W x H x D) | 380 x 600 x 328 mm | 440 x 712 x 400 mm |
| Weight | 13 kg | 18 kg |



V WAVE SERIES

With **V WAVE** PROEL has further expanded the potential of the acclaimed V SERIES by adding to the lightweight ultra-durable PP cabinets, to the **clear and accurate sound** and to the **powerful 600W amplifier** an **ultra-versatile 3-ch mixer section**.

V10WAVE and **V12WAVE** are active portable sound systems featuring multiple inputs and an advanced **MP3 player with BLUETOOTH connectivity**, able to play songs from an SD card, a USB MEMORY STICK and also from your smartphone or tablet thru a **BLUETOOTH connection**. V WAVE include also the **BT LINK** function that allows to connect your BLUETOOTH device to two speakers in STEREO mode, completely eliminating the need for cables.

The built-in 3-channel mixer, with independent level controls and a 2-band EQ, includes also **two USB inputs** for connecting PROEL **U24H** or **U24B 2.4GHz Wireless Microphones with USB receiver**. These hassle-free wireless systems, available both with handheld and bodypack transmitter, can be connected to the speakers just plugging in the ultra-compact USB receiver and offer a high-definition, interference-free transmission thanks to the 2.4GHz technology.

V WAVE loudspeakers can be used in a variety of applications, ranging from speech diffusion and music playback to live music and DJ sets. The extremely versatile cabinets can be mounted on standard speaker poles and the V12WAVE is even fitted with a luggage-style extra handle and two wheels.



V10WAVE

- Bi-amplified 2-way system
- 1" high-definition neodymium compression driver on a wide-dispersion 90° x 60° constant coverage horn
- 10" long-excursion woofer with 2" voice coil
- 600 W total peak power amplifier
- 3ch built-in mixer with MP3 player and BT
- Two USB inputs for 2.4GHz wireless microphones
- SPL MAX 123 dB
- Frequency response 60 Hz - 20 kHz
- 14.5 kg total weight



BT LINK function for connecting one bluetooth device in STEREO mode to two V WAVE speakers

V12WAVE

- Bi-amplified 2-way system
- 1" high-definition neodymium compression driver on a wide-dispersion 90° x 60° constant coverage horn
- 12" long-excursion woofer with 2.5" voice coil
- 600 W total peak power amplifier
- 3ch built-in mixer with MP3 player and BT
- Two USB inputs for 2.4GHz wireless microphones
- SPL MAX 124 dB
- Frequency response 50 Hz - 20 kHz
- 15.5 kg total weight



Two USB inputs for connecting 2.4GHz wireless microphones

V10WAVE

V12WAVE

| | V10WAVE | V12WAVE |
|--------------------------------|--|------------------------------|
| MIXER Section | | |
| MONO inputs | 2 x MIC/LINE IN (XLR-F + 1.4" JACK) | |
| STEREO input | 1 x LINE IN (2xRCA + MINI-JACK) | |
| WIRELESS inputs | 2 x USB TYPE-A | |
| Outputs | MONO LINE OUT (1.4" JACK) | |
| Main EQ | 2-band EQ (HIGH + LOW) | |
| MULTIMEDIA Section | | |
| Player Type | USB / SD / BLUETOOTH player with BT LINK | |
| Compatible File Formats | MP3 | |
| Control Interface | LCD display, CONTROL buttons | |
| AMPLIFIER Section | | |
| Total Peak Power | 600W | |
| Continuous Power | 300W | |
| Amplifier Type | Class D | |
| Power Supply | SMPS | |
| Processing | Analog | |
| LOUDSPEAKER Section | | |
| System Type | 2-way vented enclosure | |
| High Frequency Device | 1" horn loaded neodymium compression driver | |
| Low Frequency Device | 10" woofer with 2"VC | 12" woofer with 2.5"VC |
| Angular Coverage | 90° H x 60° V | |
| Frequency Response | 60 Hz - 20 kHz | 50 Hz - 20 kHz |
| Max SPL | 123 | 124 |
| GENERAL Specifications | | |
| Construction | Polypropylene | |
| Cabinet Colour | Black | |
| Handles | 1 x top | 1 x top, 1 x top retractable |
| Wheels | - | 2 rear |
| Mounting Pole | 1 x bottom | |
| Dimensions (WxHxD) | 330 x 514 x 286 mm | 380 x 603 x 359 mm |
| Weight | 14.5 kg (31.9 lb.) | 15.5 kg (34.2 lb.) |
| Power Supply | 230 V~ or 115 V~ 50/60 Hz with LINE VOLTAGE selector | |
| Rated Consumption | 300W | |

OPTIONAL ACCESSORIES

COVERV10FW



Cover for V10FREE and V10WAVE

COVERV12FW



Cover for V12FREE and V12WAVE



V FREE SERIES

PROEL V FREE systems gives you the freedom to perform your music or play your sound anywhere, with a **superb sound quality** and without the hassle of laying down cables or finding a power outlet.

V10FREE and **V12FREE** are **battery-powered** portable sound systems featuring a powerful **400W amplifier**, a built-in **3-channel mixer** with effect and tone controls and an advanced **MP3 player with BLUETOOTH connectivity**, featuring a large back-lit LCD display and able to play songs from SD card, USB MEMORY STICK or directly from your smartphone or tablet.

They includes also **two USB inputs** for connecting PROEL **U24H** or **U24B 2.4GHz Wireless Microphones with USB receiver**, available both with handheld and bodypack transmitter. Just plug in the ultra-compact USB receiver and you can instantly use a professional wireless system, offering a high-definition, interference-free transmission thanks to the 2.4GHz technology. The premium loudspeakers, the Class D power amplifier and the sophisticated processing provide a superb sound quality, while the built-in Li-ion battery allows for up to **10 hours of mains-free continuous operation**, for the maximum freedom of use.

Both these **ultra-portable and light-weight** systems (10kg and 11kg respectively) can be installed on standard speaker poles and the V12FREE is fitted with a luggage-style extra handle and two wheels.

Incredibly simple to set-up and use, V FREE loudspeakers are perfect for a wide range of applications, including parties, schools, corporate and educational presentations, seminars, gym, weddings, live music and even DJ sets.



V10FREE

- Bi-amplified 2-way system
- 1" high-definition neodymium compression driver
- 10" long-excursion woofer with 1.5" voice coil
- 400 W total peak power amplifier
- Li-Ion battery for 10 hours continuous use
- 3ch built-in mixer with MP3 player and BT
- Two USB inputs for 2.4GHz wireless microphones
- SPL MAX 122 dB
- Frequency response 60 Hz - 20 kHz
- 10 kg total weight



Rechargeable Li-Ion battery for 10 hours continuous use

V12FREE

- Bi-amplified 2-way system
- 1" high-definition neodymium compression driver
- 12" long-excursion woofer with 2" voice coil
- 400 W total peak power amplifier
- Li-Ion battery for 10 hours continuous use
- 3ch built-in mixer with MP3 player and BT
- Two USB inputs for 2.4GHz wireless microphones
- SPL MAX 123 dB
- Frequency response 50 Hz - 20 kHz
- 11 kg total weight



MP3 player with large LCD and BLUETOOTH connection

OPTIONAL ACCESSORIES

COVERV10FW



Cover for V10FREE and V10WAVE

COVERV12FW



Cover for V12FREE and V12WAVE

| | V10FREE | V12FREE |
|--------------------------------|---|------------------------------|
| MIXER Section | | |
| MONO inputs | 2 x MIC/LINE IN (XLR-F + 1.4" JACK) | |
| STEREO input | 1 x LINE IN (2xRCA + MINI-JACK) | |
| WIRELESS inputs | 2 x USB TYPE-A | |
| Internal EFFECT | ECHO | |
| Outputs | MONO LINE OUT (1.4" JACK) | |
| Main EQ | 2-band EQ (HIGH + LOW) | |
| MULTIMEDIA Section | | |
| Player Type | USB / SD / BLUETOOTH player | |
| Compatible File Formats | MP3 | |
| Control Interface | LCD display, CONTROL buttons | |
| AMPLIFIER Section | | |
| Total Peak Power | 400W | |
| Continuous Power | 200W | |
| Amplifier Type | Class D | |
| Power Supply | SMPS | |
| Processing | Analog | |
| LOUDSPEAKER Section | | |
| System Type | 2-way vented enclosure | |
| High Frequency Device | 1" horn loaded neodymium compression driver | |
| Low Frequency Device | 10" woofer with 1.5"VC | 12" woofer with 2"VC |
| Angular Coverage | 90° H x 60° V | |
| Frequency Response | 60 Hz - 20 kHz | 50 Hz - 20 kHz |
| Max SPL | 122 | 123 |
| GENERAL Specifications | | |
| Construction | Polypropylene | |
| Cabinet Colour | Black | |
| Handles | 1 x top | 1 x top, 1 x top retractable |
| Wheels | - | 2 rear |
| Mounting Pole | 1 x bottom | |
| Dimensions (WxHxD) | 330 x 514 x 286 mm | 380 x 603 x 359 mm |
| Weight | 10 kg (22.1 lb.) | 11 kg (24.3 lb.) |
| Recharge Battery | 11.1 V / 8000 mAh Li-ion | |
| Battery Recharging Time | 4-5 hours | |
| Battery Working Time | 10-12 hours | |
| Power Supply | 100V-240 V ~ 50/60 Hz | |
| Rated Consumption | 300 W | |



U24 **SERIES**

The Ultimate USB Digital Wireless solution

The **U24 USB** Wireless Microphones are **professional wireless systems** offering a high-definition, interference-free transmission thanks to the **2.4GHz technology** and featuring an **ultra-compact USB receiver**.

The receiver is powered thru the USB interface and features a dual-mode audio interface for an auto-sensing connection **both to analog and digital devices**. It features a plug-and-play operation with no driver installation required and it can be connected to any **PC/MAC** for recording directly into your favorite DAW application. Using a proper USB type-A adapter it can be also connected to **IOS or Android devices** for digital stand alone applications. Finally, it can be plugged into any PROEL device featuring a USB WIRELESS input (such as **V FREE and V WAVE speakers**) for using a professional microphone system in a flash and without the hassle of cables.

The digital 2.4GHz wireless technology offers superior sound quality and maximum reliability, avoiding interferences from television stations and other broadcast devices. The transmitter is automatically paired to the receiver and the **intelligent frequency hopping** ensures a stable connection.

U24H includes a handheld microphone featuring a **high-quality dynamic capsule** for dedicated vocal applications.

U24H



U24B



- 2.4 GHz ISM license-free operating band with Intelligent Frequency Hopping
- Ultra-compact USB receiver with dual-mode audio interface
- Easy pairing and memorization of matched devices
- More than 25 meters (100 ft) operating range in open spaces
- Applications: video production, podcasting, video blogging, presentations, lectures and seminars

U24H – Receiver

| | |
|-----------------------|-------------------|
| Frequency Range | 2.404 – 2.476 GHz |
| RF Sensitivity | -78 dB |
| Frequency Response | 50 Hz – 15 KHz |
| Sampling | 16 bit @ 38.5KHz |
| THD | <0.05% @ 1KHz |
| SN Ratio | >85 dB |
| Transmission Delay | 18.3 mS |
| Output Connector | USB Type-A |
| Audio Output Level | 4dBu (1000mV) |
| Current | <55mA |
| Operating Temperature | -10 °C ~ 50 °C |
| Dimensions (WxHxD) | 94 x 26 x 9.5 mm |

WM24M – Handheld Transmitter

| | |
|-----------------------|-------------------------|
| Frequency Range | 2.404 – 2.476 GHz |
| Transmitting Power | < 10 dBm |
| Transmission Distance | Up to 25m (open space) |
| Frequency Response | 50 Hz – 15 KHz |
| Sampling | 16 bit @ 38.5KHz |
| THD | <0.05% @ 1KHz |
| SN Ratio | >85 dB |
| Transmission Delay | 18.3 mS |
| Power Supply Battery | 2x1.5V AA alkaline type |
| Operating Time | Up to 20 hours |
| Dimensions (WxHxD) | H: 278 x Ø: 47 mm |



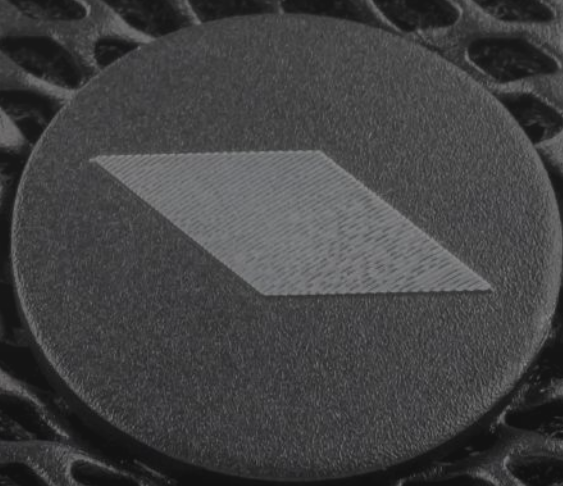
Ultra-compact USB receiver featuring a dual-mode analog and digital connection.

AN INCREDIBLE NUMBER OF APPLICATIONS FOR RECORDING, EDUCATION, JOURNALISM, GAMING, VOIP AND PODCASTING

The U24 directly connects to PC, Mac computers or portable devices for digital stand alone applications.



The U24 directly connects to PC, Mac computers or portable devices for digital stand alone applications.



DIVA SERIES

DIVA12A and **DIVA15A** are **digitally processed** active loudspeaker systems featuring multiple inputs and a versatile **BLUETOOTH** connectivity. Hosted in lightweight yet ultra-durable polypropylene cabinets with ergonomic handles, they combine selected transducers driven with a powerful **1000W CLASS-D amplifier** with SMPS, featuring high headroom and an accurate dynamic control for the maximum undistorted output power. The sophisticated pre-amp section includes an advanced processing with **high-performance DSP engine and linear phase FIR filters**, for a very smooth response and high-definition sound.



An intuitive user's interface with **LCD color display and single-knob control** is available for a quick selection and display of the **5 available EQ presets** (MUSIC, LIVE, DJ, MONITOR, SPEECH), allowing the speakers to be perfectly adapted to any kind of application.

Thanks to the built-in **3-channel mixer** with MIC/GUITAR/LINE input selection, HIGH and LOW EQ controls and **two WIRELESS USB inputs** for the use of PROEL U24 microphone systems, the DIVA12A and DIVA15A can be used in a variety of applications also without external equipment.

The **BLUETOOTH** interface allows to reproduce audio in mono streaming with a single speaker or in stereo streaming with two speakers and the **STEREO LINK (TWS) function**.





High-performance DSP engine and linear phase FIR filters.



3-channel mixer with MIC/GUITAR/LINE input selection HIGH and LOW EQ



Lightweight PP cabinets with wedge angle and dedicated MONITOR DSP preset



DIVA12A

- 2-way active processed loudspeaker system
- 1" high-definition compression driver with 1.35"VC and titanium diaphragm
- Wide-coverage 90° x 60° constant directivity horn
- 12" long-excursion woofer with 2" voice coil
- High-efficiency 1000 W peak Class D power amplifier with SMPS
- Built-in 3-channel mixer with MIC/LINE inputs and HIGH & LOW EQ controls
- High-definition DSP with 24-bit converters and FIR filters
- 5 DSP presets (MUSIC, LIVE, DJ, MONITOR, SPEECH)
- BLUETOOTH audio interface with STEREO LINK
- Color LCD display for the DSP editing
- SPL MAX: 127 dB
- Frequency response: 50 Hz - 20 kHz
- Lightweight, compact and ultra-durable PP cabinet
- 2 ergonomic handles for effortless transportation
- Slanted shape for the use as a stage monitor
- Four M10 flying points

| DIVA12A | |
|--------------------------------------|--|
| System type | 2-way vented enclosure |
| High Frequency Device | 1" compression driver with 1.35" voice coil and titanium diaphragm |
| Low Frequency Device | 12" woofer with 2" VC |
| Angular Coverage | 90° H x 60° V |
| Total Peak Power | 1000 W |
| HF Amplifier Continuous Power | 100 W Class AB |
| LF Amplifier Continuous Power | 400 W Class D |
| Power Supply | SMPS |
| System Processing | DSP |
| Frequency Response | 50 Hz - 20 kHz |
| Max SPL | 127 dB |
| Inputs | 2 x MIC/LINE (COMBO), 1 X STEREO LINE (MINIJACK), 2 x USB WIRELESS |
| Outputs | 1 x selectable MIX OUT / CH1 LINK (M-XLR) |
| Controls | CHANNEL LEVEL, INPUT SELECTOR, HIGH & LOW EQ, ROTARY PUSH ENCODER, COLOR LCD |
| Bluetooth | Version 5.0, Audio Streaming, STEREO LINK (TWS) |
| Power Supply | 100-120 V ~ or 220-240 V ~ at 50/60 Hz with self-switch |
| Rated Consumption* | 300 W |
| GENERAL SPECIFICATIONS | |
| Floor Monitor Angle | 45° |
| Flying System | 4 x M10 - top/bottom |
| Cabinet Material | Polypropylene |
| Handles | 1 x top, 1 x side |
| Mounting Pole | 1 x bottom |
| Dimensions (W x H x D) | 364 x 617 x 346 mm |
| Weight | 16.0 kg (35.3 lb) |

* Rated consumption is measured with pink noise with a crest factor of 12 dB, this can be considered a standard music program.

OPTIONAL ACCESSORIES

U24H



2.4GHz USB Wireless Handheld Microphone System

U24B



2.4GHz USB Wireless Backpack Microphone System

COVERDIVA12 COVERDIVA15



KPTFLDIVA12 KPTFLDIVA15



DIVA15A

- 2-way active processed loudspeaker system
- 1" high-definition compression driver with 1.35" VC and titanium diaphragm
- Wide-coverage 90° x 60° constant directivity horn
- 15" long-excursion woofer with 2.5" voice coil
- High-efficiency 1000 W peak Class D power amplifier with SMPS
- Built-in 3-channel mixer with MIC/LINE inputs and HIGH & LOW EQ controls
- High-definition DSP with 24-bit converters and FIR filters
- 5 DSP presets (MUSIC, LIVE, DJ, MONITOR, SPEECH)
- BLUETOOTH audio interface with STEREO LINK
- Color LCD display for the DSP editing
- SPL MAX: 129 dB
- Frequency response: 45 Hz - 20 kHz
- Lightweight, compact and ultra-durable PP cabinet
- 2 ergonomic handles for effortless transportation
- Slanted shape for the use as a stage monitor
- Four M10 flying points

DIVA15A

| | |
|--------------------------------------|--|
| System type | 2-way vented enclosure |
| High Frequency Device | 1" compression driver with 1.35" voice coil and titanium diaphragm |
| Low Frequency Device | 15" woofer with 2.5" VC |
| Angular Coverage | 90° H x 60° V |
| Total Peak Power | 1000 W |
| HF Amplifier Continuous Power | 100 W Class AB |
| LF Amplifier Continuous Power | 400 W Class D |
| Power Supply | SMPS |
| System Processing | DSP |
| Frequency Response | 45 Hz - 20 kHz |
| Max SPL | 129 dB |
| Inputs | 2 x MIC/LINE (COMBO), 1 x STEREO LINE (MINIJACK), 2 x USB WIRELESS |
| Outputs | 1 x selectable MIX OUT / CH1 LINK (M-XLR) |
| Controls | CHANNEL LEVEL, INPUT SELECTOR, HIGH & LOW EQ, ROTARY PUSH ENCODER, COLOR LCD |
| Bluetooth | Version 5.0, Audio Streaming, STEREO LINK (TWS) |
| Power Supply | 100-120 V ~ or 220-240 V ~ at 50/60 Hz with self-switch |
| Rated Consumption* | 300 W |
| GENERAL SPECIFICATIONS | |
| Floor Monitor Angle | 45° |
| Flying System | 4 x M10 - top/bottom |
| Cabinet Material | Polypropylene |
| Handles | 1 x top, 1 x side |
| Mounting Pole | 1 x bottom |
| Dimensions (W x H x D) | 421 x 696 x 382 mm |
| Weight | 19.0 kg (41.8 lb) |

* Rated consumption is measured with pink noise with a crest factor of 12 dB, this can be considered a standard music program.



Two ergonomic handles



Powerfull DSP Engine with delay adjustment



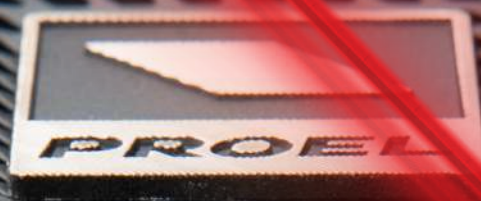
Four professional wheels for easy transportation



DIVASUB18A NEW

- Compact active subwoofer
- High efficiency custom 18" woofer with 3" VC
- 1500W peak power
- STEREO input and output
- High-definition DSP with 24-bit converters
- 2 presets (FLAT/BOOST) and 2 modes of use (NORMAL/CARDIOD)
- DELAY selection up to 10mt
- LCD display for DSP editing
- MAXIMUM SPL 132dB
- Frequency response 35 Hz – 160 Hz

| DIVASUB18A | |
|-----------------------------------|---|
| System type | Vented enclosure subwoofer |
| Loudspeaker | 18" woofer with 3" VC |
| Amplifier Continuous Power | 750 W |
| Amplifier Peak Power | 1500 W |
| Frequency Response | 35 Hz - 160 Hz |
| Max SPL | 132 dB |
| Connectors | IN: 2 x NEUTRIK COMBO OUT: 2 x NEUTRIK XLR-M |
| Controls | LCD DIAL |
| Power Supply | 230 VAC or 115 VAC 50/60 Hz |
| Weight | 38 kg (83.77 lb) |
| Cabinet | 15/18 mm plywood Black anti-scratch paint 1.5 mm metal grille 2 handles 1 x pole socket 4 x 75 mm wheels |
| Dimensions (W x H x D) | 510x650x650 (without wheels) mm 510x650x752 (with wheels) mm |



FLASH SERIES

FLASH5AV2 FLASH5PV2



- Bi-amplified 2-way system
- Studio-grade dome tweeter on elliptical waveguide
- 5" woofer with PP cone
- 200W total peak power
- SPL MAX 114 dB
- Frequency response 70 Hz - 20 kHz
- Passive version available in BLACK (FLASH5P) and WHITE (FLASH5PW)

| PASSIVE | FLASH5PV2 |
|-------------------------------|----------------------|
| Nominal Impedance | 16 Ω |
| Power Continuous (AES) | 80 W |
| Power Program | |
| Power Peak | 160 W |
| Frequency Response | 80 Hz - 20 kHz |
| Sensitivity | 91 dB @ 1 W/1 m |
| Crossover Frequency | 3000 Hz |
| Connectors | Push terminals |
| Weight | 2.5 kg (5.5 lb) |
| GENERAL SPECIFICATIONS | |
| Floor Monitor Angle | 42° |
| Flying System | 3 x M6 - top/bottom |
| Cabinet Material | Polypropylene |
| Handles | 1 x top |
| Pole Socket | - |
| Dimensions (W x H x D) | 175 x 265 x 176.5 mm |

| ACTIVE | FLASH5AV2 |
|-------------------------------|---|
| System type | 2-way vented enclosure |
| High Frequency Device | Soft dome tweeter on elliptical waveguide |
| Low Frequency Device | 5 woofer with PP cone |
| Angular Coverage | 90° H x 60° V |
| Total Peak Power | 200 W |
| HF Amplifier Continuous Power | 20 W Class AB |
| LF Amplifier Continuous Power | 80 W Class D |
| Power Supply | Linear |
| Processing | Analog |
| Frequency Response | 70 Hz - 20 kHz |
| Max SPL | 114 |
| Connectors | IN/LINK: XLR F, 1/4 JACK, 2 x RCA |
| Controls | LEVEL, NEARFIELD/MIDFIELD, GND LIFT |
| Power Supply | 230 VAC or 120 VAC 50/60 Hz |
| Weight | 3.6 kg (7.9 lb) |

OPTIONAL ACCESSORIES



- SNWH**
ABS installation bracket for FLASH5PW (white)
- SNBK**
ABS installation bracket for FLASH5P (black)

KPTFL5 KPTFL5W



Brackets for FLASH5 Black and White

- KPTLTP
- KPTLTPW



Bracket for FLASH8XP and FLASH12XP



LT SERIES

The LITE Series by PROEL is an extended range of active and passive speaker systems with plywood cabinet offering the renowned **PROEL sound** and a **high-level performance** in a reliable and affordable package.

For the construction of the cabinets we have used **plywood**, a very lightweight and durable material that makes moving and installing these speakers very quick and easy. Strong, anti-scratch paint and steel grilles with an internal foam layer provide proper **protection** for years of service.



LT812A

- 3-way SAT + SUB active loudspeaker system
- SAT: 1" compression driver + 8" woofer with 1.5" VC
- SUB: 12" woofer with 3" VC
- 1600W peak power
- SPL MAX 121dB + 124dB
- Frequency response 45 Hz - 20 kHz
- Two SPEAKON power cables included

| | LT812SAT | LT812SUB |
|-----------------------------------|--|--|
| System type | 2-way vented enclosure | Vented sub-woofer |
| High Frequency Device | 1" compression driver with 1" VC | - |
| Low Frequency Device | 8" woofer with 1.5" VC | 12" woofer with 3" voice coil |
| Angular Coverage | 60° H x 40° V | - |
| Max SPL | 121 | 124 |
| System Frequency Response | 45 Hz - 20 kHz | |
| Amplifier Total Peak Power | 1600 W | |
| Amplifier Continuous Power | SAT: 2 x 200 W Class AB - SUB: 400 W Class D | |
| Power Supply | SMPS | |
| Processing | Analog | |
| Controls | SUB LEVEL, GND LIFT | |
| Connectors | 1 x SPEAKON | IN: 2 x COMBO, LINK: 2 x XLR M OUT: 2 x SPEAKON |
| Cabinet construction | Plywood with anti-scratch paint | Plywood with anti-scratch paint |
| Cabinet Colour | Black | Black |
| Handles | 1 x rear | 2 x sides |
| Mounting Pole | 1 x bottom, dual angle | 1 x top |
| Power Supply | 230 VAC or 120 VAC 50/60 Hz with LINE VOLTAGE selector | |
| Dimensions (W x H x D) | 220 x 442 x 260 mm | 475 x 462 x 610 mm |
| Weight | 7.5 kg / 16.5 lbs. | 34 kg / 74.9 lbs. |



Easy and effortless transportation of the whole system



3-channel CLASS D+AB lightweight and powerful amplifier module

OPTIONAL ACCESSORIES



COVERLT812A



4
YEARS
WARRANTY

2 years standard warranty
+ 2 years extended warranty

PROEL

The warranty is provided by PROEL on the website www.proel.com within 6 months from the date of purchase.

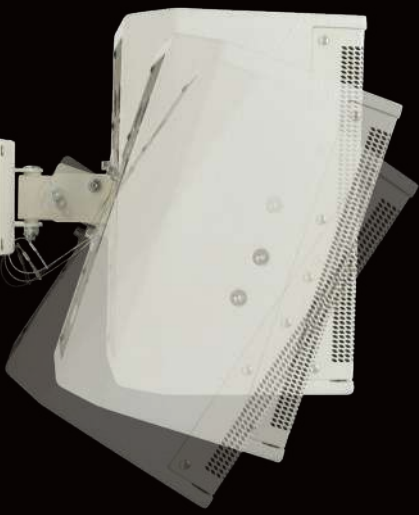


LTX SERIES

LTX is a complete series of active and passive speakers designed specifically for a wide range of commercial and residential installations. The speaker systems are hosted in rugged plywood enclosures available in black or white and offering a refined and unobtrusive aesthetics, capable of fitting into any environment. All the cabinets feature multiple suspension points and dedicated accessories for a wide choice of mounting options. For the high frequency reproduction we have designed symmetrical 90x90° dispersion horns, able to provide constant coverage for large audiences in both vertical and horizontal installations, and detailed response with low distortion. The high-excursion woofers, together with carefully tuned vented cabinets, offer an extended response with deep and tight basses.

The active versions are powered by amplifiers featuring the latest technologies for amplification, such as Switch Mode Power Supply and CLASS D output stages, and providing a massive amount of power with reduced size and weight. They include a sophisticated pre-amp section with up to 24 dB/oct. phase aligned crossover filters and active EQ filters for the system's fine tuning, together with POWERCON mains connectors. The HF and LF independent LIMITER circuits ensure an undistorted sound even at the loudest level and a total loudspeaker protection.





LTX6A **NEW**

LTX6AW **NEW**

- 1" neodymium tweeter
- 6.5" woofer
- 90° H x 90° V coverage
- 320 W peak power amplifier
- Frequency response 75 Hz - 20 kHz
- SPL max peak 110 dB



LTX8A **NEW**

LTX8AW **NEW**

- 1" compression driver
- 8" woofer
- 90° H x 90° V coverage
- 320W peak power amplifier
- Frequency response 70 Hz - 20 kHz
- SPL max peak 121 dB





LTX10A **NEW**
LTX10AW **NEW**

- 1" compression driver
- 10" woofer
- 90° H x 90° V coverage
- 600 W peak power amplifier
- Frequency response 60 Hz - 20 kHz
- SPL max peak 123 dB



LTX12A **NEW**
LTX12AW **NEW**

- 1" compression driver
- 12" woofer
- 90° H x 90° V coverage
- 600 W peak power amplifier
- Frequency response 50 Hz - 20 kHz
- SPL max peak 124 dB



**OPTIONAL
ACCESSORIES**



KPTLTP



KPTLTPW



**KPTLT10
KPTLT12**



**KPTLT10W
KPTLT12W**



LTX6P **NEW**

LTX6PW **NEW**

- 1" neodymium tweeter
- 6.5" woofer
- 90° H x 90° V coverage
- 160 W peak power handling
- Frequency response 75 Hz - 20 kHz
- SPL 1w/1m 88 dB



LTX8P **NEW**

LTX8PW **NEW**

- 1" compression driver
- 8" woofer
- 90° H x 90° V coverage
- 160 W peak power handling
- Frequency response 70 Hz - 20 kHz
- SPL 1w/1m 92 dB





LTX10P **NEW**

LTX10PW **NEW**

- 1" compression driver
- 10" woofer
- 90° H x 90° V coverage
- 500W peak power handling
- Frequency response 60 Hz - 20 kHz
- SPL 1w/1m 94 dB



LTX12P **NEW**

LTX12PW **NEW**

- 1" compression driver
- 12" woofer
- 90° H x 90° V coverage
- 500W peak power handling
- Frequency response 50 Hz - 20 kHz
- SPL 1w/1m 96dB



OPTIONAL ACCESSORIES



KPTLTP



KPTLTPW



KPTLT10
KPTLT12



KPTLT10W
KPTLT12W



GENERAL SPECIFICATIONS

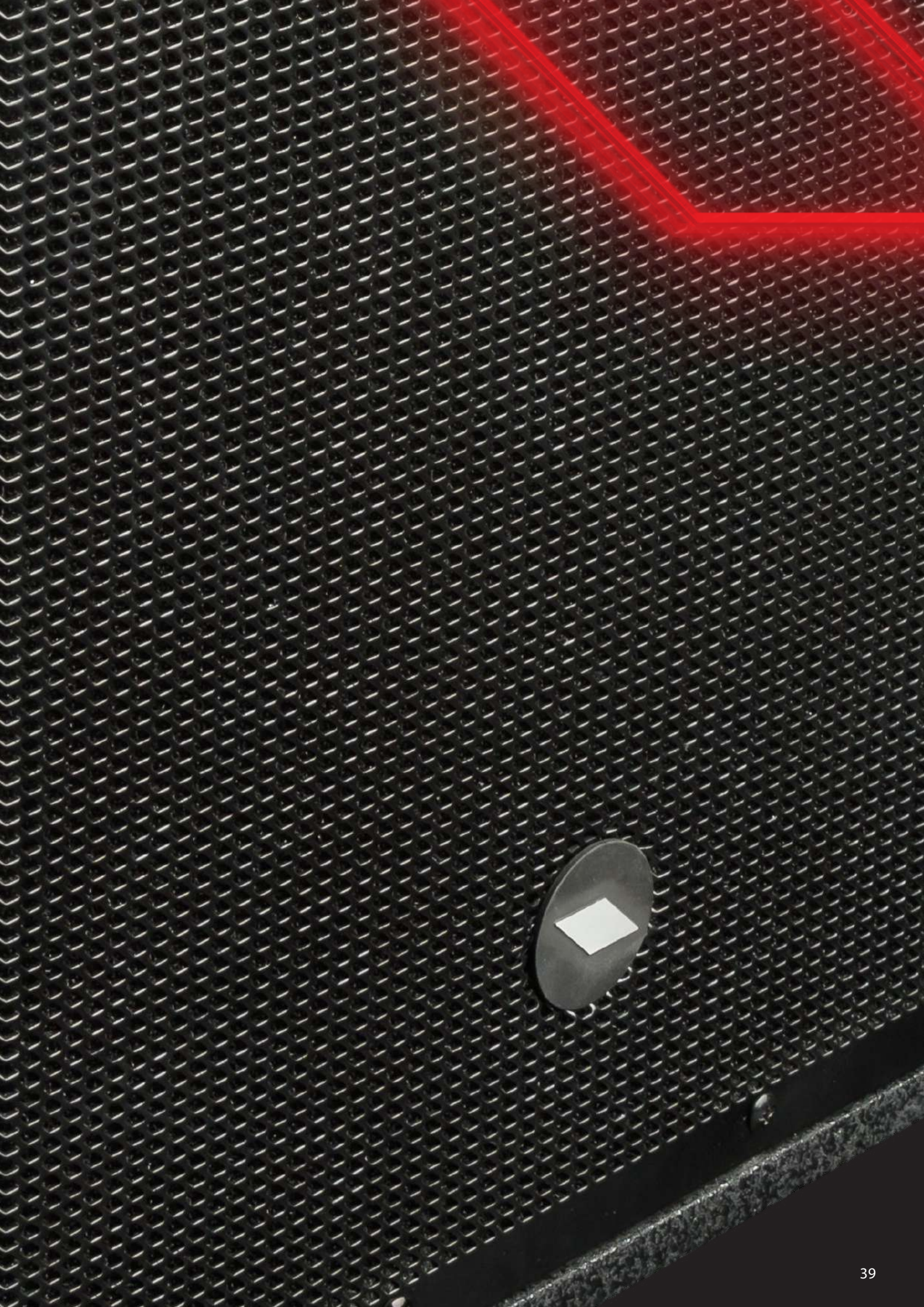
| | LTX6 | LTX8 | LTX10 | LTX12 |
|-------------------------------|--|--|--|--|
| System type | 2-way vented enclosure | 2-way vented enclosure | 2-way vented enclosure | 2-way vented enclosure |
| High Frequency Device | 1" neodymium tweeter | 1" compression driver with 1"VC | 1" compression driver with 1"VC | 1" compression driver with 1"VC |
| Low Frequency Device | 6.5" woofer with 1"VC | 8" woofer with 1.5"VC | 10" woofer with 2" voice coil | 12" woofer with 2.5" voice coil |
| Angular Coverage | 90° H x 90° V | 90° H x 90° V | 90° H x 90° V | 90° H x 90° V |
| Flying System | 4 x M8, 3 x M6 | 3 x M8, 3 x M6 | 4 x M8, 3 x M6 | 4 x M8, 3 x M6 |
| Construction | Plywood | Plywood | Plywood | Plywood |
| Handles | - | 1 x rear | 1 x rear | 1 x rear |
| Mounting Polee | - | 1 x bottom | 1 x bottom | 1 x bottom |
| Mounting Bracket | Tilt and Swivel bracket (included) C-shape bracket (optional) | Tilt and Swivel bracket (included) C-shape bracket (optional) | Tilt and Swivel bracket (optional) C-shape bracket (optional) | Tilt and Swivel bracket (optional) C-shape bracket (optional) |
| Dimensions (W x H x D) | 205 x 318 x 200 mm | 227 x 442 x 220 mm | 295 x 515 x 280 mm | 345 x 595 x 300 mm |

ACTIVE VERSIONS

| | LTX6A - LTX6AW | LTX8A - LTX8AW | LTX10A - LTX10AW | LTX12A - LTX12AW |
|--------------------------------------|------------------------|------------------------|-------------------------|-------------------------|
| Total peak power | 320 W | 320 W | 600 W | 600 W |
| HF Amplifier Continuous Power | 80 W Class D | 80 W Class D | 50 W Class AB | 50 W Class AB |
| LF Amplifier Continuous Power | 80 W Class D | 80 W Class D | 250 W Class D | 250 W Class D |
| Power Supply | SMPS | SMPS | SMPS | SMPS |
| Processing | Analog | Analog | Analog | Analog |
| Frequency Response | 75 Hz – 20 kHz | 70 Hz – 20 kHz | 60 Hz – 20 kHz | 50 Hz – 20 kHz |
| Max SPL | 110 dB | 121 dB | 123 dB | 124 dB |
| Connectors | IN: COMBO, LINK: XLR M | IN: COMBO, LINK: XLR M | IN: COMBO, LINK: XLR M | IN: COMBO, LINK: XLR M |
| Controls | LEVEL | LEVEL | LEVEL | LEVEL |
| Power Supply | 100 – 240 VAC 50/60 Hz | 100 – 240 VAC 50/60 Hz | 230 or 115 VAC 50/60 Hz | 230 or 115 VAC 50/60 Hz |
| Weight | 4.5 kg / 9.9 lbs | 7.0 kg / 15.4 lbs | 12.0 kg / 26.5 lbs | 15.0 kg / 33.1 lbs |

PASSIVE VERSIONS

| | LTX6P - LTX6PW | LTX8P - LTX8PW | LTX10P - LTX10PW | LTX12P - LTX12PW |
|--------------------------------|-------------------|--------------------|--------------------|-------------------|
| Power Rating Continuous | 80 W | 160 W | 250 W | 250 W |
| Power Rating Peak | 160 W | 320 W | 500 W | 500 W |
| Impedance | 8 ohm | 8 ohm | 8 ohm | 8 ohm |
| Frequency Response | 75 Hz – 20 kHz | 70 Hz – 20 kHz | 60 Hz – 20 kHz | 50 Hz – 20 kHz |
| SPL (1w / 1m) | 88 dB | 92 dB | 94 dB | 96 dB |
| Connectors | 2 x SPEAKON | 2 x SPEAKON | 2 x SPEAKON | 2 x SPEAKON |
| Weight | 4.45 kg / 9.8 lbs | 6.95 kg / 15.3 lbs | 11.7 kg / 25.8 lbs | 14.8kg / 32.6 lbs |





S SERIES



PROEL introduces the **S Series**, a new range of compact and powerful sub-woofers designed to complement PROEL full-range passive or active speakers. The **variety of size, power and SPL** offered by the four S models provides, at an unbeatable price point, the perfect low extension solution for any speaker model available in the PROEL range.

All the S models feature high-excursion woofers in a **Hybrid Band Pass configuration (HBP)**. This innovative design provides a higher efficiency compared to direct radiation sub-woofers and, in addition, guarantees a much better coupling of the tuning ducts with the external air, reducing the distortion and the air turbulence, for a **more defined sound and deep and punchy lows**.

The new **CLASS D** amplifier modules with SMPS (Switch Mode Power Supply) can generate a massive amount of continuous power in a compact, lightweight and reliable package. All the modules include a **STEREO pre-amp section**, 24dB/oct. crossover filters with selectable frequency and PHASE reverse switch.

The cabinets are built with 15/18mm plywood and finished with **extra-durable polyurethane paint**. They feature two flush handles and four sturdy 75mm wheels for an easy transport (S15 and S18 only).



S18A

- Compact active HBP sub-woofer
- 18" woofer with 3"VC for a deep and extended response
- 1200W peak power
- STEREO input, link and output
- SPL MAX 131 dB
- Frequency response 36 Hz - 140 Hz
- Passive version available (S18P)



S15A

- Compact active HBP sub-woofer
- 15" woofer with 2.5"VC for a deep and extended response
- 1200 W peak power
- STEREO input, link and output
- SPL MAX 129 dB
- Frequency response 40 Hz - 160 Hz
- Passive version available (S15P)



Lightweight and rugged plywood cabinets with extra-durable polyurethane paint



STEREO preamp section with selectable frequency 24dB/oct. crossover filters



High-excursion woofers in Hybrid Band Pass (HBP) configuration



High-efficiency, lightweight and reliable CLASS D amplifier modules with SMPS



S12A

- Compact active HBP sub-woofer
- 12" woofer with 2.5"VC for a deep and extended response
- 1200 W peak power
- STEREO input, link and output
- SPL MAX 128 dB
- Frequency response 43 Hz - 160 Hz



Compact cabinet profile that fits perfectly on any stage and in any fixed installation



S10A

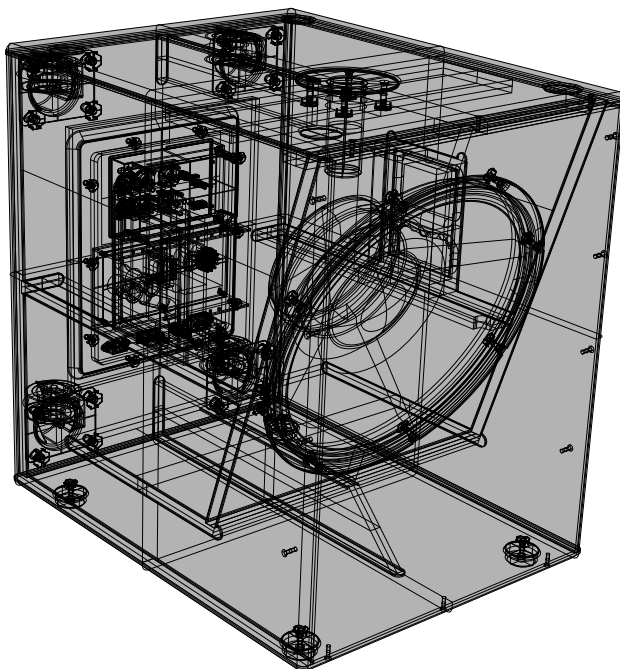
- Compact active HBP sub-woofer
- 10" woofer with 2"VC for a deep and extended response
- 700 W peak power
- STEREO input, link and output
- SPL MAX 119 dB
- Frequency response 46 Hz - 160 Hz
- Passive version available (S10P)

| ACTIVE | S10A | S12A | S15A | S18A |
|-----------------------------------|--|--|--|--|
| System type | Hybrid Band Pass subwoofer | Hybrid Band Pass subwoofer | Hybrid Band Pass subwoofer | Hybrid Band Pass subwoofer |
| Loudspeaker | 10" woofer with 2" VC | 12" woofer with 2.5" VC | 15" woofer with 2.5" VC | 18" woofer with 3" VC |
| Amplifier Continuous Power | 350 W | 600 W | 600 W | 600 W |
| Frequency Response | 46 Hz - 160 Hz | 43 Hz - 160 Hz | 40 Hz - 160 Hz | 36 Hz - 140 Hz |
| Max SPL | 119 dB | 127dB | 129dB | 131 dB |
| Connectors | IN: 2 x NEUTRIK COMBO OUT: 2 x NEUTRIK XLR-M LINK: 2 x NEUTRIK XLR-MIN: 2 x NEUTRIK COMBO OUT: 2 x NEUTRIK XLR-M LINK: 2 x NEUTRIK XLR-M | IN: 2 x NEUTRIK COMBO OUT: 2 x NEUTRIK XLR-M LINK: 2 x NEUTRIK XLR-MIN: 2 x NEUTRIK COMBO OUT: 2 x NEUTRIK XLR-M LINK: 2 x NEUTRIK XLR-M | IN: 2 x NEUTRIK COMBO OUT: 2 x NEUTRIK XLR-M LINK: 2 x NEUTRIK XLR-MIN: 2 x NEUTRIK COMBO OUT: 2 x NEUTRIK XLR-M LINK: 2 x NEUTRIK XLR-M | IN: 2 x NEUTRIK COMBO OUT: 2 x NEUTRIK XLR-M LINK: 2 x NEUTRIK XLR-MIN: 2 x NEUTRIK COMBO OUT: 2 x NEUTRIK XLR-M LINK: 2 x NEUTRIK XLR-M |
| Controls | Volume, GND lift X-over Frequency, Phase | Volume, GND lift X-over Frequency, Phase | Volume, GND lift X-over Frequency, Phase | Volume, GND lift X-over Frequency, Phase |
| Power Supply | 230 VAC or 120 VAC 50/60 Hz | 230 VAC or 120 VAC 50/60 Hz | 230 VAC or 120 VAC 50/60 Hz | 230 VAC or 120 VAC 50/60 Hz |
| Weight | 14 kg (30.8lb) | 19 kg (41.9 lb) | 26 kg (57.3 lb) | 34.5 kg (76 lb) |

| PASSIVE | S10P | S15P | S18P |
|-------------------------------|-------------------------------|-------------------------------|-------------------------------|
| Nominal Impedance | 8 Ω | 8 Ω | 8 Ω |
| Power Continuous (AES) | 200 W | 400 W | 500 W |
| Power Program | 400 W | 800 W | 1000 W |
| Power Peak | 800 W | 1600 W | 2000 W |
| Frequency Response | 46 Hz - 160 Hz | 40 Hz - 160 Hz | 36 Hz - 160 Hz |
| Sensitivity | 95 dB @ 1 W/1 m | 97 dB @ 1 W/1 m | 98 dB @ 1 W/1 m |
| Connectors | 2 x NEUTRIK SPEAKON (IN/LINK) | 2 x NEUTRIK SPEAKON (IN/LINK) | 2 x NEUTRIK SPEAKON (IN/LINK) |
| Weight | 12.5 kg (27.5 lb) | 24.5 kg (54 lb) | 33 kg (72.7 lb) |

GENERAL SPECIFICATIONS

| | | | | |
|-------------------------------|---|---|---|---|
| Cabinet | 15/18 mm plywood Black anti-scratch paint 1.5 mm metal grille 2 handles 1 x pole socket | 15/18 mm plywood Black anti-scratch paint 1.5 mm metal grille 2 handles 1 x pole socket | 15/18 mm plywood Black anti-scratch paint 1.5 mm metal grille 2 handles 1 x pole socket 4 x 75 mm wheels | 15/18 mm plywood Black anti-scratch paint 1.5 mm metal grille 2 handles 1 x pole socket 4 x 75 mm wheels |
| Dimensions (W x H x D) | 315x420x495 mm | 360x500x520 mm | 435x570x560 mm | 508x630x645 mm |



OPTIONAL ACCESSORIES



COVERS10



COVERS12



COVERS15



COVERS18



WX SERIES



WX series stage monitors, with a perfect sound intelligibility, a high SPL and an ultra-compact format, can offer a **professional yet affordable monitoring solution able to fit into stages of any size.**

The transducers' **coaxial** design not only provides an optimal HF and LF alignment and a controlled directivity for a perfect listening from any position, but it also helps to minimize the size of the monitor. The **ultra-compact enclosures**, with integrated handle and pole socket, have been designed to feature a very low profile and, therefore, a minimal footprint on stage. The cabinets are finished with **extra-strong polyurethane painting**, making them resistant to any abuse.

The lightweight **500W CLASS D amplifier module** with SMPS provides a high output that results in an unexpected SPL for such small loudspeakers. The sophisticated analogue processing provides a detailed response, particularly in the vocal range, and a remarkable resistance to feedback. **Two EQ PRESETS** are available for the use of the speaker not only for stage monitoring (MONITOR), but also as a MAIN SOUND SYSTEM (FOH) if necessary.

The WX monitors are available in **two models**, offering the right solution for different monitoring situations. The ultracompact **WX8A** can provide a high-quality monitoring also in very small spaces and it can give its best with speech, vocals and acoustic instruments. **WX10A**, with a higher SPL and a full-range response, is ideal for vocals, guitar, horns and electronic instruments or as a monitor for DJs.



WX8A

- Active 2-way coaxial stage monitor
- 1" compression driver with 1"VC
- 8" woofer with 2"VC
- 500 W total peak power
- SPL MAX: 122dB
- Frequency response: 80 Hz - 20 kHz



Coaxial speakers for a superior sound definition and an even directivity

WX10A

- Active 2-way coaxial stage monitor
- 1" compression driver with 1"VC
- 10" woofer with 2"VC
- 500 W total peak power
- SPL MAX: 123dB
- Frequency response: 70 Hz - 20 kHz

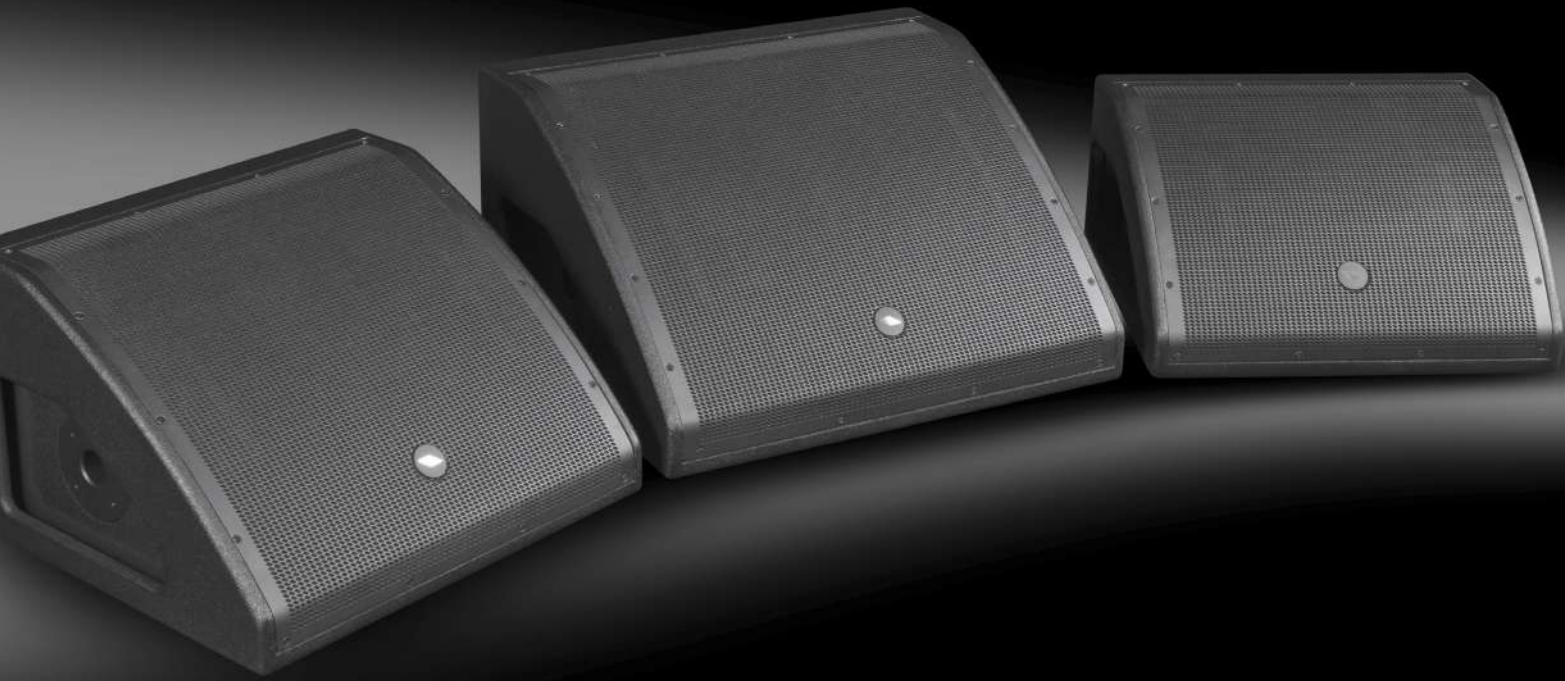


500W CLASS D power amplifiers with MONITOR and FOH EQ presets

| | WX8A | WX10A |
|-----------------------------------|---|---|
| System type | 2-way coaxial vented enclosure | 2-way coaxial vented enclosure |
| High Frequency Device | 1" compression driver with 1"VC | 1" compression driver with 1"VC |
| Low Frequency Device | 8" woofer with 2"VC | 10" woofer with 2"VC |
| Angular Coverage | 80° H x 80° V | 80° H x 80° V |
| Total Peak Power | 500 W | 500 W |
| Amplifier Continuous Power | 250 W Class D | 250 W Class D |
| Power Supply | SMPS | SMPS |
| Processing | Analog | Analog |
| Frequency Response | 80 Hz - 20 kHz | 70 Hz - 20 kHz |
| Max SPL | 122 dB | 123 dB |
| Connectors | IN: Combo LINK: XLR M | IN: Combo LINK: XLR M |
| Controls | LEVEL, PRESET selector (MONITOR, FOH), GND lift | LEVEL, PRESET selector (MONITOR, FOH), GND lift |
| Power Supply | 100-240 VAC 50/60 Hz | 100-240 VAC 50/60 Hz |
| Stage Monitor Angle | 36° | 36° |
| Cabinet | MDF with black anti-scratch polyurethane paint | MDF with black anti-scratch polyurethane paint |
| Pole Socket | 1 x side | 1 x side |
| Handles | 1 x side | 1 x side |
| Dimensions (W x H x D) | 325x336x233 mm | 390x396x270 mm |
| Weight | 8 kg (17.6 lb) | 10 kg (22 lb) |



Ultra-strong polyurethanic finishing for maximum strength and durability



WD SERIES V2

In the past few years with the **WEDGE Series** PROEL has set a standard for **affordable and road-proof stage monitors**, able to offer a highly valuable monitoring solution, with **perfect sound intelligibility and high SPL** in low-profile and portable enclosures. The **Version 2** of this very successful series represents a major step forward, with several design's refinements and feature's improvements.

The lightweight **CLASS D amplifier modules with SMPS** have been completely **re-designed**, to provide the utmost reliability even when the system is stressed at the highest sound pressure levels. Coupled to a **sophisticated analog processing**, they provide an extremely detailed response, particularly in the vocal range, and a remarkable resistance to feedback. Two tailored EQ PRESETS are available for the use of the speaker not only for stage monitoring (**MONITOR**), but also as a MAIN SOUND SYSTEM (**FOH**).

The stylish design of the cabinets, with integrated handles, recessed connection panel and pole socket, has been optimized **reducing further the profile** and, therefore, the footprint on the stage. Knowing very well the mistreatments the stage monitors are usually subjected to, we have greatly improved the strength of the cabinets' **polyurethane painting**, making them resistant to any abuse.

Also the **custom designed coaxial transducers**, able to provide a perfect HF and LF alignment and a controlled directivity for a perfect listening from any position, have been updated, especially the 10" that features now a compression driver with increased efficiency.

The V2 WEDGE monitors are available in three models, offering the perfect solution for any monitoring situations. The ultra-compact **WD10AV2** is able to offer a high-performance monitoring also on small stages and it's the ideal solution for speech, vocals and keyboards. **WD12AV2**, with its high SPL and its full-range response, is the favorite choice for vocals, guitar, horns and electronic instruments or as a high-power monitor for DJs. **WD15AV2**, with its full extension and powerful and deep response at the low frequencies, is the ideal monitor for bass and drums players. The horn-loaded HF section and the powerful amplifier make it the perfect solution for monitoring also on very large stages.



WD10AV2

- Active 2-way coaxial stage monitor
- 1" compression driver with 1"VC
- 10" woofer with 2"VC
- 500 W total peak power
- SPL MAX: 123dB
- Frequency response: 60 Hz - 20 kHz



Coaxial speakers for a superior sound definition and an even directivity

WD12AV2

- Active 2-way coaxial stage monitor
- 1" compression driver with 1.35"VC
- 12" woofer with 2.5"VC
- 700 W total peak power
- SPL MAX: 124dB
- Frequency response: 50 Hz - 20 kHz



New-design CLASS D power amplifiers for improved performance and reliability

WD15AV2

- Active 2-way coaxial stage monitor
- 1" compression driver with 1.35" VC on a waveguide
- 15" woofer with 3"VC
- 900 W total peak power
- SPL MAX: 126dB
- Frequency response: 45 Hz - 20 kHz



New ultra-strong polyurethane finishing for maximum strength and durability

| | WD10AV2 | WD12AV2 | WD15AV2 |
|--------------------------------------|--|--|--|
| System type | 2-way coaxial vented enclosure | 2-way coaxial vented enclosure | 2-way coaxial vented enclosure |
| High Frequency Device | 1" compression driver with 1"VC | 1" compression driver with 1"VC | 1" compression driver with 1.35"VC |
| Low Frequency Device | 10" woofer with 2"VC | 12" woofer with 2.5"VC | 15" woofer with 3"VC |
| Angular Coverage | 80° H x 80° V | 80° H x 80° V | 60° H x 60° V |
| Total Peak Power | 500 W | 700 W | 900 W |
| HF Amplifier Continuous Power | 50 W Class AB | 50 W Class AB | 50 W Class AB |
| LF Amplifier Continuous Power | 200 W Class D | 300 W Class D | 400 W Class D |
| Power Supply | SMPS | SMPS | SMPS |
| Processing | Analog | Analog | Analog |
| Frequency Response | 60 Hz - 20 kHz | 50 Hz - 20 kHz | 45 Hz - 20 kHz |
| Max SPL | 123 dB | 124 dB | 126 dB |
| Connectors | IN: Combo LINK: XLR M | IN: Combo LINK: XLR M | IN: Combo LINK: XLR M |
| Controls | LEVEL, PRESET selector (MONITOR, FOH), GND lift | LEVEL, PRESET selector (MONITOR, FOH), GND lift | LEVEL, PRESET selector (MONITOR, FOH), GND lift |
| Power Supply | 230 VAC or 120 VAC 50/60 Hz | 230 VAC or 120 VAC 50/60 Hz | 230 VAC or 120 VAC 50/60 Hz |
| Stage Monitor Angle | 36° | 36° | 36° |
| Cabinet | Plywood with black anti-scratch polyurethane paint | Plywood with black anti-scratch polyurethane paint | Plywood with black anti-scratch polyurethane paint |
| Pole Socket | 1 x side | 1 x side | 1 x side |
| Handles | 2 x side | 2 x side | 2 x side |
| Dimensions (W x H x D) | 490x265x375 mm | 510x310x440 mm | 600x335x490 mm |
| Weight | 12 kg (26.4 lb) | 15 kg (33 lb) | 21 kg (46.3 lb) |

OPTIONAL ACCESSORIES



**CPWD10V2 - CPWD12V2
CPWD15V2**

Wedge series flight case (for 2 unit)

**COVERWD10V2
COVERWD12V2
COVERWD15V2**

Wedge series padded covers

SESSION 1

SESSION1 is a **portable column system** featuring multiple inputs and a versatile MP3 player with **BLUETOOTH** connectivity. Hosted in lightweight yet ultra-durable polypropylene cabinets, it is composed by a **column with four high-definition 2.5" full-range speakers** and a powerful **8" sub-woofer**. The **state-of-the-art electronics** includes a sophisticated pre-amp section with active filtering and dual CLIP LIMITERS, and a powerful 2-channel **400W Class D** power amplifier.

The built-in MEDIA PLAYER is able to play songs from an **SD** card or a **USB MEMORY STICK**, but also from your smartphone or your tablet thru a **BLUETOOTH** connection, without the need of any cable. The built-in **3-channel mixer** allows to connect two microphone or line sources and a stereo player, each one with independent level controls. A digital EFFECT is also available for microphone inputs. With a simple knob is possible to **optimize** the sound for speech, music or low boost applications, adapting the system to any situation.

SESSION1 can be used in a variety of applications, ranging from **speech diffusion** and **music playback** to **live music** and **DJ sets**.



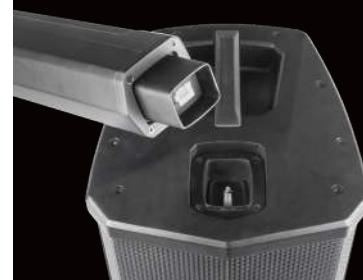
SESSION1

SESSION1FREE

- Active portable column system
- Column with four high-definition 2.5" full-range speakers
- 8" long-excursion subwoofer
- Fast-linking system and integrated power connections to adjust the column to the desired height
- 2-channel 400 W peak Class D power amplifier with SMPS
- Sophisticated pre-amp section with active filtering and dual CLIP LIMITERS
- Built-in 3-channel mixer with MIC/LINE inputs and digital EFFECT
- Sub level control (SPEECH/MUSIC/BOOST)
- USB/SD MEDIA PLAYER with BLUETOOTH audio interface with STEREO LINK
- SPL MAX: 108 dB
- Frequency response: 50 Hz - 18 kHz
- Lightweight, compact and ultra-durable PP cabinet
- Padded bag for the 3-pcs column included
- 8000 mAh Li-ion battery (SESSION 1 FREE)



A padded bag for the 3 pieces column speaker transportation is included.



Fast-coupling system with integrated power signal link

MIXER SECTION

| | |
|------------------------|-------------------------------------|
| MONO inputs | 2 x MIC/LINE IN (XLR-F + 1.4" JACK) |
| STEREO input | 1 x LINE IN (MINI-JACK) |
| Outputs | LINE OUT (XLR-M) |
| Main EQ | SUB LEVEL (SPEECH-MUSIC-BOOST) |
| Internal Effect | ECHO-DELAY |

MULTIMEDIA SECTION

| | |
|--------------------------------|---|
| Player Type | USB / SD / WIRELESS AUDIO player with STEREO LINK |
| Compatible File Formats | MP3, WAV, WMA, APE, FLAC |
| Control Interface | LCD display, CONTROL buttons |

AMPLIFIER SECTION

| | |
|-------------------------|---------|
| Total Peak Power | 400 W |
| Continuous Power | 200 W |
| Amplifier Type | Class D |
| Power Supply | SMPS |
| Processing | Analog |

LOUDSPEAKER SECTION

| | |
|------------------------------|--|
| System Type | Compact powered column system with subwoofer |
| High Frequency Device | 4 x 2.5" (66mm) drivers |
| Low Frequency Device | 8" (200mm) woofer with 1.5" VC |
| Angular Coverage | 90° H x 60° V |
| Frequency Response | 50Hz – 18kHz |
| Maximum SPL Output | 108 dB |

GENERAL SPECIFICATIONS

| | |
|--------------------------------|--|
| Construction | Polypropylene |
| Cabinet Colour | Black |
| Column system | 3-pcs with fast-linking system and integral power connections |
| Handles | 1 x subwoofer top |
| Accessories | Padded bag for 3-pcs column |
| Dimensions (WxHxD) | *SUB: 318x 400x484.5 mm COLUMN (each piece): 520 X 84 X 97.5 mm" |
| Weight | 21 Kg (complete system) |
| Power Supply | 100 V-240 V ~ 50/60 Hz / 11.1 V 8000 mAh Li-ion battery (SESSION 1 FREE) |
| Rated Power Consumption | 100 W |



Built-in 3-channel mixer and MEDIA PLAYER with SD/USB and STEREO BLUETOOTH connection



SESSION4

SESSION4 is a **compact portable array system in an active 2.1 configuration**, including two tops and one subwoofer. Designed for solo performers, small live groups, mobile DJ setups or for music and voice playback in corporate and even home applications, the **SESSION4** combines **flexibility, portability** and **performance** with a professional design and a sturdy plywood construction.

Each top includes **four 2.75" neodymium drivers in vertical array configuration**, featuring a **logarithmic arrangement** and a **progressive down tilt**, for increasing the vertical coverage and providing an accurate sound in any part of the listening area. The sub features **two 6.5" woofers in band-pass configuration**, able to provide **very 'punchy' and dynamic basses**, together with an extended low frequency response.

The system is powered by a **3-channel 1200W Class D amplifier** and it's controlled by the **powerful PROEL CORE LT DSP**, able to deliver an outstanding sound definition. The signal processing includes a sophisticated Dynamic EQ and **4 EQ PRESETS (MUSIC, LIVE, DJ, SPEECH)** to adapt the speakers to any kind of application. The **intuitive control interface** features a single knob and a large LCD display, for controlling not only the DSP parameters but also the two MIC/LINE selectable inputs, the system's configuration and the built-in **BLUETOOTH** audio interface.

The **SESSION4** key features are extreme flexibility and portability, which make it one of the most advanced mobile column systems available. Thanks to a **fast linking system with integrated connections**, the two tops can be combined together, forming a longer 8-driver column and allowing the system to be used not only in **STEREO** mode, but also in **MONO** or **DOUBLE** mode. Two **dedicated compartments** in the sub's cabinet allow the tops to be stored and transported in the unit itself, reducing the space requirement for a better mobility in line with the needs of today's musicians.



SESSION4

- 2.1 processed active system with two TOPS and one SUBWOOFER

TOP

- Four 2.75" neodymium full-range speakers in Vertical Array configuration
- Logarithmic arrangement of the speakers with progressive down tilt for an increased vertical coverage
- Fast-coupling of the two tops with integrated power signal link to obtain a single 8-speaker column

SUB

- Two high-excursion 6.5" woofers in BAND PASS configuration
- Two built-in compartments for hosting the tops, for an easy transport of the whole system

SYSTEM

- Plywood cabinet with black ultra-durable polyurethane paint
- 3-channel Class D SMPS power amplifier, 1200W total peak power
- Two MIC/LINE (XLR-F) inputs
- Control & connection panel on the cabinet's top for an easy access
- High-definition CORE LT DSP with A/D and D/A 24 bit converters and Dynamic EQ
- User-friendly control interface with single knob and large LCD
- 4 DSP presets (MUSIC, LIVE, DJ, SPEECH)
- 3 selectable system's configurations: STEREO, MONO and DOUBLE
- Bluetooth stereo interface
- SPL MAX (system): 122 dB peak
- Frequency response: 45 Hz - 18 kHz



Fast-coupling system with integrated power signal link



Logarithmic speaker arrangement with progressive tilt for increased vertical coverage

| SYSTEM | SESSION 4 |
|-----------------------------------|--|
| System Type | Portable Powered 2.1 System with Two Line Array Tops and One Subwoofer |
| Maximum SPL Output | 122 dB peak system output (pink noise) |
| Frequency Response (-10dB) | 45Hz – 18kHz |
| SPEAKERS | |
| LF Driver | 2 x 6.5" (165mm) woofer in BANDPASS configuration |
| HF Driver | 8 x 2.75" (70mm) neodymium drivers (4 for each TOP) |
| Coverage Pattern | 100° x 50° |
| AMPLIFIER | |
| Type | Class D with SMPS |
| System Power Rating | 300 Watts LF, 2x150 Watts HF Continuous, 1200W Peak |
| Channels | 2 MIC/LINE selectable inputs |
| Connectors | 2 x COMBO (INPUTS), 2 x XLR-M (LINK), 2 x SPEAKON (POWER OUTPUTS) |
| Controls | 1 x LCD with Data Encoder |
| Processing | 24bit / 48kHz CORE DSP - 2-band EQ Selectable CONFIGURATION and EQ PRESETS - Digital Limiting |
| Wireless Audio | Bluetooth built-in receiver |
| GENERAL SPECIFICATIONS | |
| Cabinet Material | Plywood |
| Finishing | High-strength polyurethane black paint |
| Grille | Powder coated perforated steel |
| Handles | 2 x sides (SUB) |
| Pole Socket | 1 x top M20 (SUB), 1 x bottom 35mm (TOP) |
| Included Accessories | M20 / 35mm telescopic pole, 4-wire SPEAKON/SPEAKON cable, 2 x SAT cover |
| AC input | 230 VAC or 120 VAC 50/60 Hz with LINE VOLTAGE selector |
| Dimensions (W x H x D) | TOP: 100x358x100 mm SUB: 420x480x460 mm |
| Weight | TOP: 1.5 kg (3.3 lbs) SUB: 22 kg (48.5 lbs) SYSTEM: 25 kg (55.1 lbs) |



User-friendly control interface with single knob and large LCD



Two built-in spaces for hosting the tops

INCLUDED ACCESSORIES



Pole in two pieces



4-wire speakon cable



SAT cover

OPTIONAL ACCESSORIES



ES01500LU10



FRE300BK



COVERSESSION4



SESSION6

SESSION6, the top-of-the-range model of the series, is a **compact high-power portable array system in an active 2.1 configuration**, including two tops and one subwoofer. Designed for **indoor and outdoor use** in live concerts, mobile DJ setups and corporate applications, the SESSION6 combines **flexibility, portability and performance** with a professional design and a sturdy plywood construction.

Each top includes **six 3.25" neodymium drivers in vertical array configuration** with **progressive down tilt**, for increasing the vertical coverage. A **custom-designed phase plug** provides an ultra-wide 120° horizontal coverage and guarantees perfect voice intelligibility and accurate sound in any part of the listening area. The sub features **two 10" high-excursion woofers with 2.5" voice coil**, able to provide very 'punchy' and dynamic basses, together with an extended low frequency response and an **impressive SPL**.

The system is powered by a **3-channel 2400W Class D amplifier** and it's controlled by the **powerful PROEL CORE LT DSP**, able to deliver an outstanding sound definition. The signal processing includes a sophisticated Dynamic EQ and **4 EQ PRESETS (MUSIC, LIVE, DJ, SPEECH)** to adapt the speakers to any kind of application. The **intuitive control interface** features a single knob and a large LCD display, for controlling not only the DSP parameters but also the two MIC/LINE selectable inputs, the system's configuration and the built-in **BLUETOOTH** audio interface.

Thanks to the innovative **die-cast fast linking system with integrated connections**, the two tops can be combined together, forming a longer 12-driver column and allowing the system to be used not only in **STEREO** mode, but also in **MONO** or **DOUBLE** mode, for an extreme flexibility.

A **dedicated padded bag** is included for storing and transporting the two columns and the provided pole and speaker cable, for the maximum portability.



SESSION6

- 2.1 processed active system with two TOPS and one SUBWOOFER
- TOP**
- Six 3.25" neodymium full-range speakers in Vertical Array configuration
 - Progressive down tilt for an increased vertical coverage
 - Custom designed phase plug for ultra-wide 120° horizontal coverage
 - Fast-coupling of the two tops with integrated power signal link to obtain a single 12-speaker column

SUB

- Two high-excursion 10" woofers with 2.5" voice coil

SYSTEM

- Plywood cabinet with black ultra-durable polyurethane paint
- 3-channel Class D SMPS power amplifier, 2400W total peak power
- Two MIC/LINE (XLR-F) inputs
- Control & connection panel on the cabinet's top for an easy access
- High-definition CORE LT DSP with A/D and D/A 24 bit converters and Dynamic EQ
- User-friendly control interface with single knob and large LCD
- 4 DSP presets (MUSIC, LIVE, DJ, SPEECH)
- 3 selectable system's configurations: STEREO, MONO and DOUBLE
- Bluetooth stereo interface
- SPL MAX (system): 128 dB peak
- Frequency response: 38 Hz - 20 kHz



Die-cast fast-coupling system with integrated power signal link



Progressive tilt and custom phase plug for increased vertical and horizontal coverage

| SYSTEM | SESSION 6 |
|-----------------------------------|--|
| System Type | Portable Powered 2.1 System with Two Line Array Tops and One Subwoofer |
| Maximum SPL Output | 128 dB peak system output (pink noise) |
| Frequency Response (-10dB) | 38Hz – 20kHz |
| SPEAKERS | |
| LF Driver | 2 x 10" (254mm) woofer in BANDPASS configuration |
| HF Driver | 12 x 3.25" (89mm) neodymium drivers (6 for each TOP) |
| Coverage Pattern | 120° x 60° |
| AMPLIFIER | |
| Type | Class D with SMPS |
| System Power Rating | 600 Watts LF, 2x300 Watts HF Continuous, 2400W Peak |
| Channels | 2 MIC/LINE selectable inputs |
| Connectors | 2 x COMBO (INPUTS), 2 x XLR-M (LINK), 2 x SPEAKON (POWER OUTPUTS) |
| Controls | 1 x LCD with Data Encoder |
| Processing | 24bit / 48KHz CORE DSP - 2-band EQ Selectable CONFIGURATION and EQ PRESETS - Digital Limiting |
| Wireless Audio | Bluetooth built-in receiver |
| GENERAL SPECIFICATIONS | |
| Cabinet Material | Plywood |
| Finishing | High-strength polyurethane black paint |
| Grille | Powder coated perforated steel |
| Handles | 2 x sides (SUB) |
| Pole Socket | 1 x top M20 (SUB), 1 x bottom 35mm (TOP) |
| Included Accessories | M20 / 35mm telescopic pole, 4-wire SPEAKON/SPEAKON cable, PADDED BAG for SAT |
| AC input | 230 VAC or 120 VAC. 50/60 Hz with LINE VOLTAGE selector |
| Dimensions (W x H x D) | TOP: 112x616x132 mm SUB: 420x580x490 mm |
| Weight | TOP: 4.5 kg (9.9lbs) SUB: 26.5 kg (58.4 lbs) |

INCLUDED ACCESSORIES

OPTIONAL ACCESSORIES



Telescopic pole



4-wire speakon cable



SAT padded bag



ES01500LU10



FRE300BK



COVERSESSION6



Padded bag for transporting the tops

FREE SERIES

All-in-one battery-powered personal PA system featuring multiple inputs and **BLUETOOTH** connectivity. Hosted in a compact, lightweight yet ultra-durable polypropylene cabinet with **multiple aiming positions**, it represents the perfect solution for musicians, DJs and general PA users. An array of **three high-definition 2" HF speakers** coupled with a **powerful 6" LF woofer** provides a consistent tonal balance, a strong output level over distance and a wide coverage of large audiences. The **state-of-the-art electronics** includes a sophisticated pre-amp section with DSP processor and a powerful **150W + 50W Class D** power amplifier. The built-in 2 mono + 1 stereo channel **digital mixer** allows to connect **two microphones or instruments** and a stereo player, each one with independent level controls. A 2-band EQ and a studio-grade **digital REVERB** is also available for microphone/instrument inputs.

The built-in **BLUETOOTH** connection allows to stream high quality audio from portable devices without the need of any cable.

The **built-in Li-ion battery** provides up to **10 hours** of mains-free continuous operation, for the maximum freedom of use.





Vertical angle positioning

FREEONEX NEW

- 3 CH mixer with 2 x MIC/GUIT/LINE IN and 1 x STEREO LINEIN
- Two band EQ for channel 1 and 2
- Studio grade Digital REVERB
- LINE OUT for connecting an additional P.A. system
- Stereo BLUETOOTH interface
- USB port for external devices charging
- High performance Lythium Ion battery powered



Standard 35 mm pole

FREEONEX

| | |
|--|---|
| System type | 2-way vented enclosure with HF array |
| High Frequency Device | 3 x 2 in |
| Low Frequency Device | 1 x 6 in |
| Frequency response (-3 dB) | 60 Hz – 18 kHz |
| Max. SPL | 115 dB |
| Coverage angle (H x V) | 120° x 50° |
| Total peak power | 400 W |
| HF continuous power | 50 W class D |
| LF continuous power | 150 W class D |
| Input Connectors | 2 x XLR/TRS Combo (balanced) 1 x 3.5mm Jack Stereo |
| Output Connectors | 1 x 6.35mm Jack (unbalanced) 1 x USB type A Charge port |
| Input Channels | 2x MIC/LINE 1x LINE/BT |
| Mic/Line Controls | Reverb, Low, High, Level |
| Stereo in/Bluetooth Controls | Pair, Level |
| Processing | 32bit DSP, 24bit AD/DA |
| Bluetooth | Protocol 5.0, Audio Streaming |
| Enclosure material | Polypropylene |
| Finish | Black Textured |
| Grille material | Powder coated steel |
| Handles | 1 x top |
| Mounting Pole | 1 x bottom |
| Dimensions (H x W x D): | 320 mm x 240 mm x 290 mm 12.59 in x 9.45 in x 11.42 in |
| Weight | 7.5 kg 16.53 lb |
| USB charging | 2 A max |
| Power Supply | 100 – 240 V~, 50 / 60 Hz |
| Consumption | 150 W |
| Battery type | Rechargeable Lithium-ion 6000mAh |
| Battery play time (at medium level) | up to 10 hours |
| Recharging time | less than 4 hours |

OPTIONAL ACCESSORIES



COVERFREEONEX



FREEPASS **SERIES**

FREEPASS10USB is an **all-in-one sound system** combining in an **ultra-portable, easy-to-use package** everything musicians and other PA users need for playing: a full-featured **mixer**, a versatile **MP3 player**, a powerful **CLASS D amplifier**, two full-range **speakers** and high-quality connection **cables**.

FREEPASS10USB is a complete PA system that, even if compact in size, quick to setup and simple to use, is packed with a **full set of features** and delivers an unexpected **sound quality** for this kind of systems. The **8-channel, 2x250W powered mixer** fits perfectly in one of the two speakers and it can be used as it is or detached with a simple operation. The second speaker includes a convenient and large compartment that can contain all the connection cables and other accessories. Two **high-quality PROEL speaker cables** with ultra-durable 1/4" metal jack connectors are also provided.

The two speakers, hosted in lightweight PP cabinets, feature a **horn-loaded 1.35" VC compression driver** and a **10" woofer**, able to provide a clean and powerful **full-range sound** with high SPL. A large handle on top of the cabinet and a pole holder on the bottom make transport and installation quick and easy.

Thanks to its versatility and portability, **FREEPASS10USB** can be used in a variety of applications, such as **live gigs** for singers or small bands, **education and sporting events, seminars and presentations**.

FREEPASS10USB

- All-in-one systems with two speakers and detachable power mixer
- 4 MIC/LINE MONO inputs with phantom power
- 2 LINE STEREO inputs
- 2-band channel EQ
- ECHO / DELAY effect
- MUSIC/SPEECH main EQ
- Built-in MP3 player with USB port
- 7-LED VU-METER
- 2-TRACK and MONITOR out
- Dual 250W CLASS D power amplifier with SMPS
- 2-way speakers with 1" horn-loaded compression driver and 8" or 10" woofer
- 2 x 7.5mt. PROEL power cables with metal ¼" JACK
- Convenient accessory compartment



Detachable powered mixer with 8 inputs and 500W amplifier



Convenient compartment for the system's cables and other accessories

FREEPASS10USB

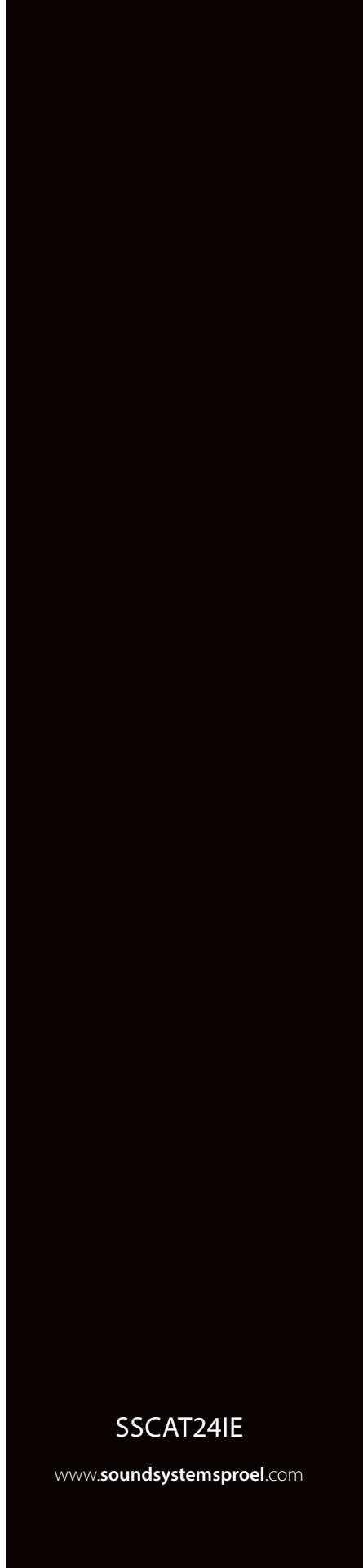
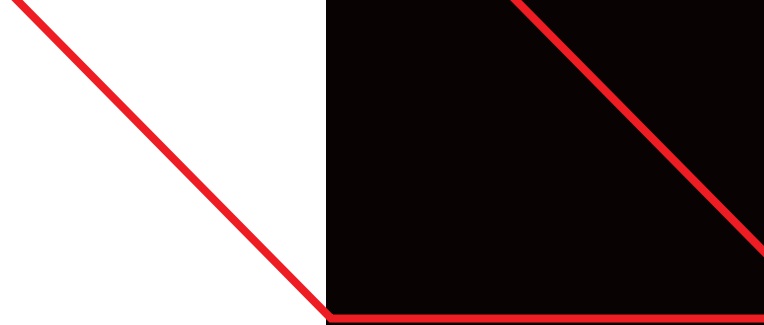
| MIXER SECTION | |
|--------------------------------|--|
| MONO inputs | (4) MIC IN (XLR-F) + LINE IN (JACK) |
| STEREO inputs | (2) LINE IN (2xJACK / 2xRCA) |
| Input EQ | HIGH: +/- 15dB 10 kHz, LOW: +/- 15dB 100 Hz |
| PHANTOM power | + 15 V (CH 1-4) |
| Internal Effect | ECHO (CH 1-4) |
| Outputs | MONITOR OUT (2xJACK), SUB OUT (1xJACK), SPEAKER OUT (2xJACK) |
| Main EQ | VOICE / MUSIC selector |
| Metering | 2x6-LED VU-METER |
| MULTIMEDIA SECTION | |
| Player Type | USB |
| Compatible File Formats | MP3 |
| Control Interface | Control buttons |
| AMPLIFIER SECTION | |
| Amplifier Type | Class D with SMPS (Switch Mode Power Supply) |
| Maximum Output Power | 2 x 250 W @ 4 ohm (1 KHz, 1% THD) |
| Frequency Response | MUSIC: 20 Hz - 20 KHz, VOICE: 80 Hz - 20 KHz |
| LOUDSPEAKER SECTION | |
| Loudspeaker System | 2-way system vented |
| High Frequency Device | 1" compression driver 1.35" VC - horn loaded |
| Low Frequency Device | 10" woofer with 2" VC |
| Angular Coverage | 90° H x 60° V |
| Impedance | 4 ohm |
| Frequency Response | 65 Hz - 20 kHz (-10 dB) |
| SPL 1W 1m | 95 dB |
| Cabinet Material | Black polypropylene, metal grille |
| Handles | 1 top |
| Pole Socket | 1 bottom |
| GENERAL SPECIFICATIONS | |
| Dimensions | Speaker: 50x32x29 cm / Mixer: 32x18x9 cm |
| Weight | System: 25 kg / Speaker: 10.6 kg / Mixer: 2.4 kg |
| Power Supply | 230 VAC / 120 VAC (switchable) 50/60 Hz |
| Power consumption | 400 W |

Alphabetical Index

| CODE | PAGE | CODE | PAGE | CODE | PAGE |
|---------------|-------|---------------|----------|--------------|-------|
| BAGMQ12FX | 7 | FLASH5AV2 | 29 | LTX8P | 36 |
| BAGMQ16FX | 8 | FLASH5PV2 | 29 | LTX8PW | 36 |
| COVERDIVA12 | 27 | FRE300BK | 51-53 | MQ12USB | 7 |
| COVERDIVA15 | 27 | FREEONEX | 55 | MQ16USB | 8 |
| COVERFREEONEX | 55 | FREEPASS10USB | 57 | PLAYMIX10 | 6 |
| COVERLT812A | 31 | KPTFL5 | 29 | PLAYMIX6 | 5 |
| COVERS10 | 43 | KPTFL5W | 29 | PLAYMIX8 | 5 |
| COVERS12 | 43 | KPTFLDIVA12 | 27 | RACKMQ12USB | 7 |
| COVERS15 | 43 | KPTFLDIVA15 | 27 | RACKMQ16USB | 8 |
| COVERS18 | 43 | KPTLT10 | 35-37 | S10A | 42 |
| COVERSESSION4 | 51 | KPTLT10W | 35-37 | S12A | 42 |
| COVERSESSION6 | 53 | KPTLT12 | 35-37 | S15A | 41 |
| COVERV10 | 17 | KPTLT12W | 35-37 | S18A | 41 |
| COVERV10FW | 19-21 | KPTLTP | 29-35-37 | SESSION1 | 49 |
| COVERV12 | 17 | KPTLTPW | 29-35-37 | SESSION1FREE | 49 |
| COVERV12FW | 19-21 | KPTV10 | 17 | SESSION4 | 51 |
| COVERV15 | 17 | KPTV12 | 17 | SESSION6 | 53 |
| COVERV8 | 17 | KPTV15 | 17 | SNBK | 29 |
| COVERWD10V2 | 47 | KPTV8 | 17 | SNWH | 29 |
| COVERWD12V2 | 47 | LT812A | 31 | U24B | 23-27 |
| COVERWD15V2 | 47 | LTX10A | 35 | U24H | 23-27 |
| CPWD10V2 | 47 | LTX10AW | 35 | V10FREE | 21 |
| CPWD12V2 | 47 | LTX10P | 37 | V10PLUS | 16 |
| CPWD15V2 | 47 | LTX10PW | 37 | V10WAVE | 19 |
| D10A | 11 | LTX12A | 35 | V12FREE | 21 |
| D10P | 11 | LTX12AW | 35 | V12PLUS | 17 |
| D20P | 11 | LTX12P | 37 | V12WAVE | 19 |
| DIVA12A | 26 | LTX12PW | 37 | V15PLUS | 17 |
| DIVA15A | 27 | LTX6A | 34 | V8PLUS | 16 |
| DIVASUB18A | 28 | LTX6AW | 34 | WD10AV2 | 47 |
| DPX1200PFC | 13 | LTX6P | 36 | WD12AV2 | 47 |
| DPX1700PFC | 13 | LTX6PW | 36 | WD15AV2 | 47 |
| DPX2500PFC | 13 | LTX8A | 34 | WX10A | 45 |
| ES01500LU10 | 51-53 | LTX8AW | 34 | WX8A | 45 |

• Tutte le specifiche possono essere variate senza alcuna notifica • Design and specifications subject to change without any notice

• E' vietata la riproduzione fotostatica e fotografica del presente catalogo, o di parti di esso, in mancanza di espressa autorizzazione da parte di Proel S.p.a.
• The photostatic and photographic reproduction of this catalogue, in whole or in part, is strictly prohibited without the prior written consent of Proel S.p.A



SSCAT24IE

www.soundssystemsproel.com

PROEL SOUND SYSTEMS

PROEL SPA

(Worldwide Headquarters)
Via alla Ruenia, 37/43
64027 Sant'Omero (TE) - ITALY
Tel. +39 0861 81241
Fax +39 0861 887862
P.I. 00778590679
N.Reg.AEE IT 08020000002762

UK

Proel International Ltd.
London

USA

Proel North America Inc.
Los Angeles

TUNISIE

Proel Tunisia Sarl
Tunisi

KOREA

Proel Korea Co. Ltd.
Gyunggi-Do

info@proel.com
www.soundsystems.proel.com

