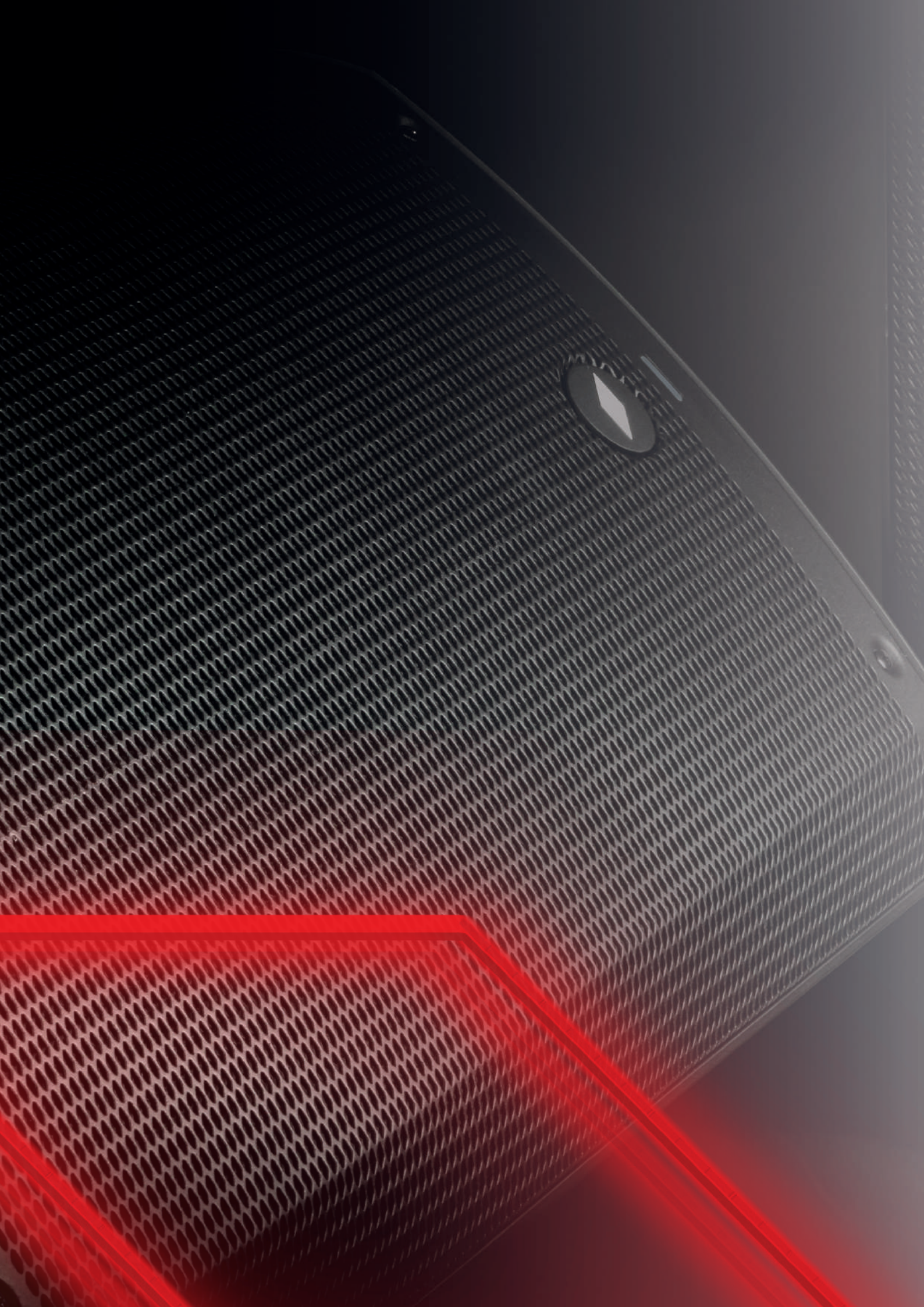




PROEL 
SOUND SYSTEMS



General Index

MIXER

- 04 **PLAYMIX** series
- 07 **MQ** series

STAGE GEAR

- 10 **D** series

POWER AMPLIFIERS

- 12 **DPX PFC** series

LOUDSPEAKERS

- 14 **V PLUS** series
- 18 **V WAVE** series
- 20 **V FREE** series
- 22 **U24** series
- 24 **DIVA** series
- 29 **FLASH** series
- 30 **LT** series
- 32 **LTX** series
- 40 **S** series
- 44 **WX** series
- 46 **WD** series

PORTABLE SYSTEMS

- 48 **SESSION** series
- 54 **FREEONEX**
- 56 **FREEPASS10USB**



PLAYMIX **SERIES**

PLAYMIX is a series of mixers created by PROEL to offer in a very compact and stylish package a high inputs density, a full set of features and a superior audio quality, at a very convenient price point.

PLAYMIX mixers are available in **3 models**, with the same channel and master functions, but offering 6, 8 or 10 inputs respectively. The mono MIC/LINE channels feature low-noise, high-headroom microphone preamps, **3-band EQ with sweep MIDs and HPF**, and 60mm control faders, for a full control of your sound. All models feature an advanced DIGITAL section with **LCD display**, including:

- A high-quality **24-bit built-in DSP with 100 studio-grade presets** of single and combined effect (REVERBS, DELAYS, MODULATIONS)
- A **48KHz stereo USB audio interface** for playing/recording thru PC connection
- A built-in MP3 player from USB memory key or **BLUETOOTH interface**
- On-the-go stereo recording on USB memory key

Carefully designed and engineered in Italy by PROEL, PLAYMIX mixers are hosted in rugged cases, providing extended durability for a stage-proof use and they offer in an ultra-compact format the performance of professional consoles, delivering a clean and accurate sound for a wide range of applications.



PLAYMIX6 **NEW**

- 2 MIC/LINE IN with PAD
- 2 STEREO IN
- 24-bit built-in DSP with 99 presets of REVERBS, DELAYS, MODULATIONS
- 48KHz stereo USB audio interface
- Built-in MP3 player/recorder and BLUETOOTH interface
- 3-band EQ with sweep mid and LOW CUT
- 60mm fader
- FX/AUX send
- XLR MAIN MIX outputs
- 5V power supply USB bus



High-headroom,
low-noise MIC
preamps



PLAYMIX8 **NEW**

- 4 MIC/LINE IN with PAD
- 2 STEREO IN
- 24-bit built-in DSP with 99 presets of REVERBS, DELAYS, MODULATIONS
- 48KHz stereo USB audio interface
- Built-in MP3 player/recorder and BLUETOOTH interface
- 3-band EQ with sweep mid and LOW CUT
- 60mm fader
- FX/AUX send
- XLR MAIN MIX outputs
- 5V power supply USB bus



XLR MAIN MIX outputs
and independent C.ROOM



24bit digital effect
with 100 presets
and multimedia
PLAYER/RECORDER

PLAYMIX10 NEW

- 6 MIC/LINE IN with PAD
- 2 STEREO IN
- 24-bit built-in DSP with 99 presets of REVERBS, DELAYS, MODULATIONS
- 48KHz stereo USB audio interface
- Built-in MP3 player/recorder and BLUETOOTH interface
- 3-band EQ with sweep mid and LOW CUT
- 60mm fader
- FX/AUX send
- XLR MAIN MIX outputs
- 5V power supply USB bus

	PLAYMI6	PLAYMI8	PLAYMI10
MONO INPUT CHANNEL			
Mic Input	sensitivity impedance	from -10 to -45 dB Balanced XLR-F 1 Kohm	
Line Input	sensitivity impedance	from +20 to -15 dB Balanced JACK 20 Kohm	
Lo cut		80Hz, 6dB/oct.	
EQ	HIGH (shelving) MID (peaking) LOW (shelving)	±15 dB @ 12K Hz ±12 dB @ 250-6K Hz ±15 dB @ 80 Hz	
STEREO INPUT CHANNEL			
Line Input	sensitivity impedance	from +12 to -15 dB Balanced JACK 20 Kohm Stereo Mini JACK	
MASTER SECTION			
MAIN MIX	nom. out level	+4 dBu Unbalanced XLR-M	
C. ROOM output	nom. out level	+4 dBu Unbalanced JACK	
SEND output	nom. out level	+4 dBu Unbalanced JACK	
HEADPHONES	min. impedance	64 ohm Stereo JACK	
Bluetooth		Version 5.0, Audio Streaming	
USB Audio Interface		Stereo IN/OUT, 16-bit converter 44.1 KHz (PENDRIVE) / 48 KHz (PC) sample rate Type A	
DIGITAL EFFECT PROCESSOR			
Effects		100 presets	
A/D and D/A converters		24 bit	
DSP resolution		24 bit	
Controls		2-DIGIT display, DIAL, LEVEL	
GENERAL SPECIFICATIONS			
Maximum level		all outputs +15 dBu	
Crosstalk		meas. at 1 KHz > 75 dB	
HUM & Noise		unweighted < 90 dB	
THD + Noise		at +4dB, 1kHz < 0,009 %	
Dimensions (WxHxD)	247 x 274 x 61 mm	331 x 274 x 61 mm	415x 274 x 61 mm
Weight	1,80 kg	2,50 kg	3,00 kg
POWER REQUIREMENTS			
Supply		use only supplied AC/DC ADAPTER 5VDC 1A	
Mains Supply Voltage		100-240 VAC (±10%) 50/60 Hz	
Consumption		15W	



MQ SERIES



MQ12USB

- Compact 12-input 4-bus mixer with effect and USB I/F
- 4 MONO MIC/LINE inputs, 2 STEREO MIC/LINE inputs and 2 STEREO LINE inputs
- 6 low-noise, very high-headroom microphone preamplifiers
- PHANTOM power
- 'One-knob' COMPRESSOR with LED indicator on MONO channels
- 3-band EQ with sweep mids and LO-CUT filter
- 1 AUX send pre-fader and 1 AUX send post-fader
- 24bit studio-grade digital effect with 100 presets, 2-digit display and footswitch MUTE
- Built-in USB interface for PC recording and playback
- GROUPS 1&2 with MIX routing and output
- HEADPHONES and CONTROL ROOM outputs
- Electronically balanced MAIN MIX outputs with XLR-M and 1/4" JACK connectors
- Two 8-LED VU-METERS
- Universal switching built-in power supply
- Applications: small live bands (3 to 5 people), home and multimedia applications, rehearsal rooms, small fixed installations



One-knob intelligent
COMPRESSORS

OPTIONAL ACCESSORIES

BAGMQ12FX



Padded bag

RACKMQ12USB



Adapter for rack



USB interface with routing options for PC recording and playback

OPTIONAL ACCESSORIES

BAGMQ16FX



Padded bag

RACKMQ16USB



Adapter for rack

MQ16USB

- Compact 16-input 4-bus mixer with effect and USB I/F
- 8 MONO MIC/LINE inputs and 4 STEREO MIC/LINE inputs
- 12 low-noise, very high-headroom microphone preamplifiers
- PHANTOM power
- 'One-knob' COMPRESSOR with LED indicator on MONO channels
- 3-band EQ with sweep mids and LO-CUT filter
- 3 AUX sends pre-fader e 1 AUX send post-fader
- 24bit studio-grade digital effect with 100 presets, 2-digit display and footswitch MUTE
- Built-in USB interface with routing options for PC recording and playback
- GROUPS 1&2 with MIX routing and output
- 2-TRACK, HEADPHONES and CONTROL ROOM outputs
- Electronically balanced MAIN MIX outputs with XLR-M and ¼" JACK connectors
- Two 12-LED VU-METERS
- Universal switching built-in power supply
- Applications: full live bands, home and multimedia applications, rehearsal rooms, fixed installations



		MQ12USB	MQ16USB	Connectors
MONO INPUT CHANNEL				
Mic Input	sensitivity	from -10 to -50 dB	from -10 to -50 dB	Balanced XLR-F
	impedance	2 Kohm	2 Kohm	
Line Input	sensitivity	from +20 to -20 dB	from +20 to -20 dB	Balanced JACK
	impedance	10 Kohm	10 Kohm	
Lo cut		75Hz, 18dB/oct.	75Hz, 18dB/oct.	
EQ	HIGH (shelving)	±15 dB @ 12KHz	±15 dB @ 12KHz	
	MID (peaking)	±15 dB @ 2.5KHz	±15 dB from 100 Hz to 8 kHz	
	LOW (shelving)	±15 dB @ 80Hz	±15 dB @ 80Hz	
Compressor		CH 1-4, 1-knob	CH 1-8, 1-knob	
STEREO INPUT CHANNEL				
Mic Input	sensitivity	from -10 to -50 dB	from -10 to -50 dB	Balanced JACK
	impedance	2 Kohm	2 Kohm	
Line Input	sensitivity	from +20 to -20 dB	from +20 to -20 dB	Balanced JACK
	impedance	10 Kohm	10 Kohm	
EQ	HIGH (shelving)		±15 dB @ 12KHz	
	MID (peaking)		±15 dB @ 2.5KHz	
	LOW (shelving)		±15 dB @ 80Hz	
MASTER SECTION				
MAIN MIX	nom. out level		+4 dB Balanced JACK and XLR-M	
C. ROOM output	nom. out level		0 dBu Unbalanced JACK	
GROUP output	nom. out level		+4 dBu Unbalanced JACK	
FX/AUX output	nom. out level		0 dBu Unbalanced JACK	
2TRK	nom. out level		0 dBu Unbalanced RCA	
	nom. in level		0 dBu Unbalanced RCA	
HEADPHONES	min. impedance		32 ohm	
	max. out level		(2x) 193 mW Stereo JACK	
USB			Stereo IN/OUT, 16-bit converter, 48 KHz sample rate Type B	
DIGITAL EFFECT PROCESSOR (not available for MQ6)				
Effects			100 presets	
A/D and D/A converters			24 bit	
DSP resolution			24 bit	
Controls			2-DIGIT display, DIAL, PEAK LED, MUTE switch, MUTE footswitch	
GENERAL SPECIFICATIONS				
Maximum level	all outputs		+22 dBu	
Crosstalk	meas. at 1 KHz		>82 dBu	
HUM & Noise	unweighted		< -93 dBu	
THD + Noise	at +4dB, 1kHz		<0.008 %	
Dimensions (WxHxD)		346 x 355 x 95 mm	481 x 432 x 104 mm	
Weight		4.50 kg	6.50 kg	
POWER REQUIREMENTS				
Supply				
Mains Supply Voltage:		110-240 VAC (±10%) 50 / 60 Hz available with EU, US or UK mains cord	110-240 VAC (±10%) 50 / 60 Hz available with EU, US or UK mains cord	
Consumption		35 W	35 W	



4
YEARS
WARRANTY

2 years standard warranty
+ 2 years extended warranty

The product is covered by the registered on the website www.proel.com within 6 months from the date of purchase.

PROEL

STAGE GEAR **SERIES**

DI Boxes perform several important functions: they are designed for impedance matching and balancing the signal of a guitar, a keyboard or any line-level output source, and for injecting directly the signal with very long connections to the XLR microphone inputs of a mixing console.

D10P

Passive direct box with transformer does not require any external power such as phantom power or batteries to work. The advantage of a transformer is the possibility to avoid any electrical connection between the sound source and the mixer. This provides two huge benefits: with no electrical path, ground loops are eliminated and the cancellation of common-mode noise, like hum, is possible.



D10A

Active direct box with transformer requires the phantom power to work. The advantage of a transformer is the possibility to avoid any electrical connection between the sound source and the mixer. This provides two huge benefits: with no electrical path, ground loops are eliminated and the cancellation of common-mode noise, like hum, is possible. The advantage of active instead of passive DIBOX is null insertion loss and less output hum and noise.



D20P

STEREO passive direct box with transformers does not require any external power such as phantom power or batteries to work. The advantage of a transformer is the possibility to avoid any electrical connection between the sound source and the mixer. This provides two huge benefits: with no electrical path, ground loops are eliminated and the cancellation of common-mode noise, like hum, is possible. D20P features two 1/4" jack to connect a stereo keyboard, or two RCA to connect a DJ console, or a 3,5mm mini-jack to connect a personal computer, for maximum flexibility without the need of special adapters.





DPX PFC SERIES

DPX PFC is a series of **ultra-lightweight** power amplifiers able to provide, for professional mobile and fixed PA systems, a huge amount of power and the **maximum performance and portability in a very affordable package**.

Thanks to the **high-density Class D technology** employed in the output stages, we've been able to build very powerful amplifiers in an ultra-compact and lightweight package. The extremely efficient **Switch Mode Power Supply (SMPS) with Power Factor Correction technology (PFC)** helps to reduce further the weight and provides universal mains operation, delivering constant energy to the loudspeakers regardless of the AC line voltage fluctuations and eliminating the need for market specific power supplies and related reliability issues.

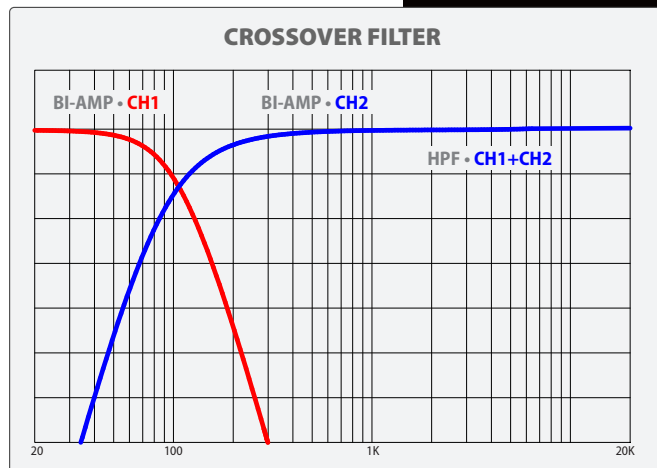
All models feature a **built-in 24dB/octave stereo crossover** with BI-AMP and HIGH-PASS options, for easily filtering a 2-way system without the need of additional outboard. Fast-attack precise CLIP LIMITERS guarantee maximum output without distortion, while a comprehensive protection system safeguards both the speakers and the amplifier.

The electronics is hosted in a **feather-light all-aluminum case**, able to provide an efficient cooling and, at the same time, protection and durability over the years.

DPX PFC are power amplifiers offering extraordinary value to professional entertainers, DJ and sound engineers looking for **massive output, excellent performance** and **absolute portability**.



- High-density Class D technology
- Very efficient Switch Mode Power Supply (SMPS) with PFC
- Built-in 24dB/octave stereo crossover
- Extensive protection system for maximum reliability
- Integrated fast-attack CLIP LIMITERS
- Precise 8-segment LED ladders
- FRONT-TO-BACK cooling system with variable speed fan
- Ultra-lightweight all-aluminum chassis
- TOTAL WEIGHT less than 5kg



	DPX1200PFC	DPX1700PFC	DPX2500PFC
Power 8 ohm*	350	500	650
Power 4 ohm**	600	850	1250
Power BRIDGE 8 ohm**	1200	1700	2500
* W RMS per channel, both channel driven, 1KHz THD 1%, ** 40ms burst			
Output Stage	Class D		
Frequency Response	20 Hz - 20 kHz		
Input Sensitivity	+2.2 dBu (1.0 Vrms)		
Input Impedance	20 kΩ balanced / 10 kΩ unbalanced		
Damping Factor	> 500 @ 8 ohm		
S/N Ratio (Unweighted)	> 100 dB		
THD+N	< 0.15 %		
Input Connectors	XLR F (INPUT), XLR F (LINK)		
Output Connectors	NL4 SPEAKON		
Controls	INPUT LEVEL, STEREO/BRIDGE-PARALLEL, FLAT/BI-AMP/HPF		
HPF/BI-AMP filter	LR 24dB / Oct. @ 100 Hz		
LED Indicators	7-LED BAR (ON, LIMIT, PROTECTION, -5dB / -10dB / -20dB / -40dB SIGNAL)		
Cooling	Variable speed DC fan, air flow from front to rear		
Protections	AC low power, DC, thermal, short circuit, VHF, CLIP limiter		
Power Supply	100-240 VAC 50/60 Hz (±10%)		
Dimensions (W x H x D)	483 x 89 x 255 mm		
Weight	3.8 Kg (8.4 lb)	3.8 Kg (8.4 lb)	4.2 Kg (9.3 lb)

DPX1200PFC
DPX1700PFC
DPX2500PFC



V PLUS series is the evolution of the acclaimed V series of PROEL powered loudspeakers delivering **absolute value** in terms of **performance, engineering** and design at a more affordable cost.

These **ultra-portable** speakers combine, in carefully engineered and light-weight cabinets, the clearest and most accurate **PROEL sound** with **Class D amplifier technology** and **Switch Mode Power Supply**, offering an unbeatable PA solution at its price point.

All the models feature an extremely efficient amplifier module capable of delivering **600 W or 400W** of robust power to the transducers. Thanks to the use of SMPS technology, this power comes in an **ultra-lightweight package**, making the V PLUS the **most portable PROEL speakers ever**. The



V PLUS **SERIES**

power module is hosted in a fully sealed aluminium box, which provides protection, perfect insulation of the cabinet from the outside and extremely efficient cooling.

Thanks to the carefully selected speakers and to the **sophisticated active electronics**, including dual CLIP LIMITERS for an undistorted sound even at the loudest level, the sound of the V PLUS has been precisely tuned in every details, in order to provide **unheard performance in this price range**. The V PLUS cabinets, expression of the most advanced **Italian design**, include a highly protective steel grille and a super-comfortable luggage-style top handle for an effortless portability. The slanted shape allows the speakers to be laid on their side and used also as stage monitors.



Ultra-lightweight, high-efficiency Class D power amplifiers with SMPS



Symmetrical 45° wedge angle for stage monitoring



Selectable MIC/LINE input with 2-band EQ

V8PLUS

- Bi-amplified 2-way system
- 1" high-definition neodymium compression driver on a wide-dispersion 90° x 60° constant coverage horn
- 8" long-excursion woofer with 1.5" voice coil
- 400 W total peak power amplifier
- SPL MAX 121 dB
- Frequency response 70 Hz - 20 kHz
- 7 kg TOTAL WEIGHT



V10PLUS

- Bi-amplified 2-way system
- 1" high-definition neodymium compression driver on a wide-dispersion 90° x 60° constant coverage horn
- 10" long-excursion woofer with 2" voice coil
- 600 W total peak power amplifier
- SPL MAX 123 dB
- Frequency response 60 Hz - 20 kHz
- 10 kg TOTAL WEIGHT



	V8PLUS	V10PLUS
System type	2-way vented enclosure	2-way vented enclosure
High Frequency Device	1" neodymium compression driver	1" neodymium compression driver
Low Frequency Device	8" woofer with 1.5" voice coil	10" woofer with 2" voice coil
Angular Coverage	90° H x 60° V	90° H x 60° V
Total peak power	400 W	600 W
HF Amplifier Continuous Power	50 W Class D	50 W Class AB
LF Amplifier Continuous Power	150 W Class D	250 W Class D
Power Supply	SMPS	SMPS
Processing	Analog	Analog
Frequency Response	70 Hz - 20 kHz	60 Hz - 20 kHz
Max SPL	121	123
Connectors	IN: COMBO, LINK: XLR M	IN: COMBO, LINK: XLR M
Controls	LEVEL, LINE/MIC selector, LOW EQ, HIGH EQ, GND LIFT, FRONT LED selector	LEVEL, LINE/MIC selector, LOW EQ, HIGH EQ, GND LIFT, FRONT LED selector
Stage Monitor Angle	45°	45°
Flying System	4 x M8 - top/bottom	4 x M10 - top/bottom
Cabinet Material	Polypropylene	Polypropylene
Cabinet Colour	Black	Black
Handles	1 x top	1 x top
Pole Socket	1 x bottom	1 x bottom
Power Supply	230 VAC or 120 VAC 50/60 Hz with LINE VOLTAGE selector	230 VAC or 120 VAC 50/60 Hz with LINE VOLTAGE selector
Dimensions (W x H x D)	280 x 422 x 252 mm	330 x 512 x 280 mm
Weight	7 kg	10 kg

V12PLUS

- Bi-amplified 2-way system
- 1" high-definition neodymium compression driver on a wide-dispersion 90° x 60° constant coverage horn
- 12" long-excursion woofer with 2.5" voice coil
- 600 W total peak power amplifier
- SPL MAX 124 dB
- Frequency response 60 Hz - 20 kHz
- 13 kg TOTAL WEIGHT



Ergonomic, ultra-comfortable top handle for an effortless transportation

V15PLUS

- Bi-amplified 2-way system
- 1" high-definition neodymium compression driver on a wide-dispersion 90° x 60° constant coverage horn
- 15" long-excursion woofer with 2.5" voice coil
- 600 W total peak power amplifier
- SPL MAX 126 dB
- Frequency response 50 Hz - 20 kHz
- 18 kg TOTAL WEIGHT



OPTIONAL ACCESSORIES

COVER8
COVER10

COVER12
COVER15



Cover for V8PLUS -V10PLUS
V12PLUS - V15PLUS

KPTV8
KPTV10

KPTV12
KPTV15



Brackets for V8PLUS -V10PLUS
-V12PLUS - V15PLUS

	V12PLUS	V15PLUS
System type	2-way vented enclosure	2-way vented enclosure
High Frequency Device	1" neodymium compression driver	1" neodymium compression driver
Low Frequency Device	12" woofer with 2.5" voice coil	15" woofer with 2.5" VC
Angular Coverage	90° H x 60° V	90° H x 60° V
Total peak power	600 W	600 W
HF Amplifier Continuous Power	50 W Class AB	50 W Class AB
LF Amplifier Continuous Power	250 W Class D	250 W Class D
Power Supply	SMPS	SMPS
Processing	Analog	Analog
Frequency Response	50 Hz - 20 kHz	45 Hz - 20 kHz
Max SPL	124	126
Connectors	IN: COMBO, LINK: XLR M	IN: COMBO, LINK: XLR M
Controls	LEVEL, LINE/MIC selector, LOW EQ, HIGH EQ, GND LIFT, FRONT LED selector	LEVEL, LINE/MIC selector, LOW EQ, HIGH EQ, GND LIFT, FRONT LED selector
Stage Monitor Angle	44°	44°
Flying System	4 x M10 - top/bottom	4 x M10 - top/bottom
Cabinet Material	Polypropylene	Polypropylene
Cabinet Colour	Black	Black
Handles	1 x top	1 x top, 2 x sides
Pole Socket	1 x bottom	1 x bottom
Power Supply	230 VAC or 120 VAC 50/60 Hz with LINE VOLTAGE selector	230 VAC or 120 VAC 50/60 Hz with LINE VOLTAGE selector
Dimensions (W x H x D)	380 x 600 x 328 mm	440 x 712 x 400 mm
Weight	13 kg	18 kg



V WAVE SERIES

With **V WAVE** PROEL has further expanded the potential of the acclaimed V SERIES by adding to the lightweight ultra-durable PP cabinets, to the **clear and accurate sound** and to the **powerful 600W amplifier** an **ultra-versatile 3-ch mixer section**.

V10WAVE and **V12WAVE** are active portable sound systems featuring multiple inputs and an advanced **MP3 player with BLUETOOTH connectivity**, able to play songs from an SD card, a USB MEMORY STICK and also from your smartphone or tablet thru a **BLUETOOTH connection**. V WAVE include also the **BT LINK** function that allows to connect your BLUETOOTH device to two speakers in STEREO mode, completely eliminating the need for cables.

The built-in 3-channel mixer, with independent level controls and a 2-band EQ, includes also **two USB inputs** for connecting PROEL **U24H** or **U24B 2.4GHz Wireless Microphones with USB receiver**. These hassle-free wireless systems, available both with handheld and bodypack transmitter, can be connected to the speakers just plugging in the ultra-compact USB receiver and offer a high-definition, interference-free transmission thanks to the 2.4GHz technology.

V WAVE loudspeakers can be used in a variety of applications, ranging from speech diffusion and music playback to live music and DJ sets. The extremely versatile cabinets can be mounted on standard speaker poles and the V12WAVE is even fitted with a luggage-style extra handle and two wheels.



V10WAVE

- Bi-amplified 2-way system
- 1" high-definition neodymium compression driver on a wide-dispersion 90° x 60° constant coverage horn
- 10" long-excursion woofer with 2" voice coil
- 600 W total peak power amplifier
- 3ch built-in mixer with MP3 player and BT
- Two USB inputs for 2.4GHz wireless microphones
- SPL MAX 123 dB
- Frequency response 60 Hz - 20 kHz
- 14.5 kg total weight



BT LINK function for connecting one bluetooth device in STEREO mode to two V WAVE speakers

V12WAVE

- Bi-amplified 2-way system
- 1" high-definition neodymium compression driver on a wide-dispersion 90° x 60° constant coverage horn
- 12" long-excursion woofer with 2.5" voice coil
- 600 W total peak power amplifier
- 3ch built-in mixer with MP3 player and BT
- Two USB inputs for 2.4GHz wireless microphones
- SPL MAX 124 dB
- Frequency response 50 Hz - 20 kHz
- 15.5 kg total weight



Two USB inputs for connecting 2.4GHz wireless microphones

V10WAVE

V12WAVE

	V10WAVE	V12WAVE
MIXER Section		
MONO inputs	2 x MIC/LINE IN (XLR-F + 1.4" JACK)	
STEREO input	1 x LINE IN (2xRCA + MINI-JACK)	
WIRELESS inputs	2 x USB TYPE-A	
Outputs	MONO LINE OUT (1.4" JACK)	
Main EQ	2-band EQ (HIGH + LOW)	
MULTIMEDIA Section		
Player Type	USB / SD / BLUETOOTH player with BT LINK	
Compatible File Formats	MP3	
Control Interface	LCD display, CONTROL buttons	
AMPLIFIER Section		
Total Peak Power	600W	
Continuous Power	300W	
Amplifier Type	Class D	
Power Supply	SMPS	
Processing	Analog	
LOUDSPEAKER Section		
System Type	2-way vented enclosure	
High Frequency Device	1" horn loaded neodymium compression driver	
Low Frequency Device	10" woofer with 2"VC	12" woofer with 2.5"VC
Angular Coverage	90° H x 60° V	
Frequency Response	60 Hz - 20 kHz	50 Hz - 20 kHz
Max SPL	123	124
GENERAL Specifications		
Construction	Polypropylene	
Cabinet Colour	Black	
Handles	1 x top	1 x top, 1 x top retractable
Wheels	-	2 rear
Mounting Pole	1 x bottom	
Dimensions (WxHxD)	330 x 514 x 286 mm	380 x 603 x 359 mm
Weight	14.5 kg (31.9 lb.)	15.5 kg (34.2 lb.)
Power Supply	230 V~ or 115 V~ 50/60 Hz with LINE VOLTAGE selector	
Rated Consumption	300W	

OPTIONAL ACCESSORIES

COVERV10FW



Cover for V10FREE and V10WAVE

COVERV12FW



Cover for V12FREE and V12WAVE



V FREE SERIES

PROEL V FREE systems gives you the freedom to perform your music or play your sound anywhere, with a **superb sound quality** and without the hassle of laying down cables or finding a power outlet.

V10FREE and **V12FREE** are **battery-powered** portable sound systems featuring a powerful **400W amplifier**, a built-in **3-channel mixer** with effect and tone controls and an advanced **MP3 player with BLUETOOTH connectivity**, featuring a large back-lit LCD display and able to play songs from SD card, USB MEMORY STICK or directly from your smartphone or tablet.

They includes also **two USB inputs** for connecting PROEL **U24H** or **U24B 2.4GHz Wireless Microphones with USB receiver**, available both with handheld and bodypack transmitter. Just plug in the ultra-compact USB receiver and you can instantly use a professional wireless system, offering a high-definition, interference-free transmission thanks to the 2.4GHz technology. The premium loudspeakers, the Class D power amplifier and the sophisticated processing provide a superb sound quality, while the built-in Li-ion battery allows for up to **10 hours of mains-free continuous operation**, for the maximum freedom of use.

Both these **ultra-portable and light-weight** systems (10kg and 11kg respectively) can be installed on standard speaker poles and the V12FREE is fitted with a luggage-style extra handle and two wheels.

Incredibly simple to set-up and use, V FREE loudspeakers are perfect for a wide range of applications, including parties, schools, corporate and educational presentations, seminars, gym, weddings, live music and even DJ sets.



V10FREE

- Bi-amplified 2-way system
- 1" high-definition neodymium compression driver
- 10" long-excursion woofer with 1.5" voice coil
- 400 W total peak power amplifier
- Li-Ion battery for 10 hours continuous use
- 3ch built-in mixer with MP3 player and BT
- Two USB inputs for 2.4GHz wireless microphones
- SPL MAX 122 dB
- Frequency response 60 Hz - 20 kHz
- 10 kg total weight



Rechargeable Li-Ion battery for 10 hours continuous use

V12FREE

- Bi-amplified 2-way system
- 1" high-definition neodymium compression driver
- 12" long-excursion woofer with 2" voice coil
- 400 W total peak power amplifier
- Li-Ion battery for 10 hours continuous use
- 3ch built-in mixer with MP3 player and BT
- Two USB inputs for 2.4GHz wireless microphones
- SPL MAX 123 dB
- Frequency response 50 Hz - 20 kHz
- 11 kg total weight



MP3 player with large LCD and BLUETOOTH connection

OPTIONAL ACCESSORIES

COVERV10FW



Cover for V10FREE and V10WAVE

COVERV12FW



Cover for V12FREE and V12WAVE

	V10FREE	V12FREE
MIXER Section		
MONO inputs	2 x MIC/LINE IN (XLR-F + 1.4" JACK)	
STEREO input	1 x LINE IN (2xRCA + MINI-JACK)	
WIRELESS inputs	2 x USB TYPE-A	
Internal EFFECT	ECHO	
Outputs	MONO LINE OUT (1.4" JACK)	
Main EQ	2-band EQ (HIGH + LOW)	
MULTIMEDIA Section		
Player Type	USB / SD / BLUETOOTH player	
Compatible File Formats	MP3	
Control Interface	LCD display, CONTROL buttons	
AMPLIFIER Section		
Total Peak Power	400W	
Continuous Power	200W	
Amplifier Type	Class D	
Power Supply	SMPS	
Processing	Analog	
LOUDSPEAKER Section		
System Type	2-way vented enclosure	
High Frequency Device	1" horn loaded neodymium compression driver	
Low Frequency Device	10" woofer with 1.5"VC	12" woofer with 2"VC
Angular Coverage	90° H x 60° V	
Frequency Response	60 Hz - 20 kHz	50 Hz - 20 kHz
Max SPL	122	123
GENERAL Specifications		
Construction	Polypropylene	
Cabinet Colour	Black	
Handles	1 x top	1 x top, 1 x top retractable
Wheels	-	2 rear
Mounting Pole	1 x bottom	
Dimensions (WxHxD)	330 x 514 x 286 mm	380 x 603 x 359 mm
Weight	10 kg (22.1 lb.)	11 kg (24.3 lb.)
Recharge Battery	11.1 V / 8000 mAh Li-ion	
Battery Recharging Time	4-5 hours	
Battery Working Time	10-12 hours	
Power Supply	100V-240 V ~ 50/60 Hz	
Rated Consumption	300 W	



U24 **SERIES**

The Ultimate USB Digital Wireless solution

The **U24 USB** Wireless Microphones are **professional wireless systems** offering a high-definition, interference-free transmission thanks to the **2.4GHz technology** and featuring an **ultra-compact USB receiver**.

The receiver is powered thru the USB interface and features a dual-mode audio interface for an auto-sensing connection **both to analog and digital devices**. It features a plug-and-play operation with no driver installation required and it can be connected to any **PC/MAC** for recording directly into your favorite DAW application. Using a proper USB type-A adapter it can be also connected to **IOS or Android devices** for digital stand alone applications. Finally, it can be plugged into any PROEL device featuring a USB WIRELESS input (such as **V FREE and V WAVE speakers**) for using a professional microphone system in a flash and without the hassle of cables.

The digital 2.4GHz wireless technology offers superior sound quality and maximum reliability, avoiding interferences from television stations and other broadcast devices. The transmitter is automatically paired to the receiver and the **intelligent frequency hopping** ensures a stable connection.

U24H includes a handheld microphone featuring a **high-quality dynamic capsule** for dedicated vocal applications.

U24H



U24B



- 2.4 GHz ISM license-free operating band with Intelligent Frequency Hopping
- Ultra-compact USB receiver with dual-mode audio interface
- Easy pairing and memorization of matched devices
- More than 25 meters (100 ft) operating range in open spaces
- Applications: video production, podcasting, video blogging, presentations, lectures and seminars

U24H – Receiver

Frequency Range	2.404 – 2.476 GHz
RF Sensitivity	-78 dB
Frequency Response	50 Hz – 15 KHz
Sampling	16 bit @ 38.5KHz
THD	<0.05% @ 1KHz
SN Ratio	>85 dB
Transmission Delay	18.3 mS
Output Connector	USB Type-A
Audio Output Level	4dBu (1000mV)
Current	<55mA
Operating Temperature	-10 °C ~ 50 °C
Dimensions (WxHxD)	94 x 26 x 9.5 mm

WM24M – Handheld Transmitter

Frequency Range	2.404 – 2.476 GHz
Transmitting Power	< 10 dBm
Transmission Distance	Up to 25m (open space)
Frequency Response	50 Hz – 15 KHz
Sampling	16 bit @ 38.5KHz
THD	<0.05% @ 1KHz
SN Ratio	>85 dB
Transmission Delay	18.3 mS
Power Supply Battery	2x1.5V AA alkaline type
Operating Time	Up to 20 hours
Dimensions (WxHxD)	H: 278 x Ø: 47 mm



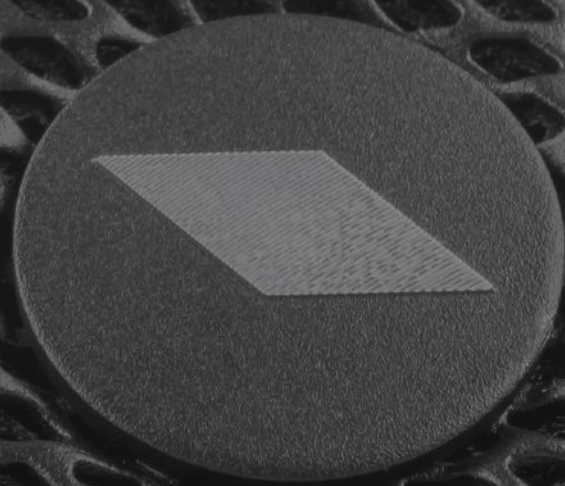
Ultra-compact USB receiver featuring a dual-mode analog and digital connection.

AN INCREDIBLE NUMBER OF APPLICATIONS FOR RECORDING, EDUCATION, JOURNALISM, GAMING, VOIP AND PODCASTING

The U24 directly connects to PC, Mac computers or portable devices for digital stand alone applications.



The U24 directly connects to PC, Mac computers or portable devices for digital stand alone applications.



DIVA SERIES

DIVA12A and **DIVA15A** are **digitally processed** active loudspeaker systems featuring multiple inputs and a versatile **BLUETOOTH** connectivity. Hosted in lightweight yet ultra-durable polypropylene cabinets with ergonomic handles, they combine selected transducers driven with a powerful **1000W CLASS-D amplifier** with SMPS, featuring high headroom and an accurate dynamic control for the maximum undistorted output power. The sophisticated pre-amp section includes an advanced processing with **high-performance DSP engine and linear phase FIR filters**, for a very smooth response and high-definition sound.



An intuitive user's interface with **LCD color display and single-knob control** is available for a quick selection and display of the **5 available EQ presets** (MUSIC, LIVE, DJ, MONITOR, SPEECH), allowing the speakers to be perfectly adapted to any kind of application.

Thanks to the built-in **3-channel mixer** with MIC/GUITAR/LINE input selection, HIGH and LOW EQ controls and **two WIRELESS USB inputs** for the use of PROEL U24 microphone systems, the DIVA12A and DIVA15A can be used in a variety of applications also without external equipment.

The **BLUETOOTH** interface allows to reproduce audio in mono streaming with a single speaker or in stereo streaming with two speakers and the **STEREO LINK (TWS) function**.





High-performance DSP engine and linear phase FIR filters.



3-channel mixer with MIC/GUITAR/LINE input selection HIGH and LOW EQ



Lightweight PP cabinets with wedge angle and dedicated MONITOR DSP preset



DIVA12A

- 2-way active processed loudspeaker system
- 1" high-definition compression driver with 1.35"VC and titanium diaphragm
- Wide-coverage 90° x 60° constant directivity horn
- 12" long-excursion woofer with 2" voice coil
- High-efficiency 1000 W peak Class D power amplifier with SMPS
- Built-in 3-channel mixer with MIC/LINE inputs and HIGH & LOW EQ controls
- High-definition DSP with 24-bit converters and FIR filters
- 5 DSP presets (MUSIC, LIVE, DJ, MONITOR, SPEECH)
- BLUETOOTH audio interface with STEREO LINK
- Color LCD display for the DSP editing
- SPL MAX: 127 dB
- Frequency response: 50 Hz - 20 kHz
- Lightweight, compact and ultra-durable PP cabinet
- 2 ergonomic handles for effortless transportation
- Slanted shape for the use as a stage monitor
- Four M10 flying points

DIVA12A	
System type	2-way vented enclosure
High Frequency Device	1" compression driver with 1.35" voice coil and titanium diaphragm
Low Frequency Device	12" woofer with 2" VC
Angular Coverage	90° H x 60° V
Total Peak Power	1000 W
HF Amplifier Continuous Power	100 W Class AB
LF Amplifier Continuous Power	400 W Class D
Power Supply	SMPS
System Processing	DSP
Frequency Response	50 Hz - 20 kHz
Max SPL	127 dB
Inputs	2 x MIC/LINE (COMBO), 1 X STEREO LINE (MINIJACK), 2 x USB WIRELESS
Outputs	1 x selectable MIX OUT / CH1 LINK (M-XLR)
Controls	CHANNEL LEVEL, INPUT SELECTOR, HIGH & LOW EQ, ROTARY PUSH ENCODER, COLOR LCD
Bluetooth	Version 5.0, Audio Streaming, STEREO LINK (TWS)
Power Supply	100-120 V ~ or 220-240 V ~ at 50/60 Hz with self-switch
Rated Consumption*	300 W
GENERAL SPECIFICATIONS	
Floor Monitor Angle	45°
Flying System	4 x M10 - top/bottom
Cabinet Material	Polypropylene
Handles	1 x top, 1 x side
Mounting Pole	1 x bottom
Dimensions (W x H x D)	364 x 617 x 346 mm
Weight	16.0 kg (35.3 lb)

* Rated consumption is measured with pink noise with a crest factor of 12 dB, this can be considered a standard music program.

OPTIONAL ACCESSORIES

U24H



2.4GHz USB Wireless Handheld Microphone System

U24B



2.4GHz USB Wireless Backpack Microphone System

COVERDIVA12 COVERDIVA15



KPTFLDIVA12 KPTFLDIVA15



DIVA15A

- 2-way active processed loudspeaker system
- 1" high-definition compression driver with 1.35" VC and titanium diaphragm
- Wide-coverage 90° x 60° constant directivity horn
- 15" long-excursion woofer with 2.5" voice coil
- High-efficiency 1000 W peak Class D power amplifier with SMPS
- Built-in 3-channel mixer with MIC/LINE inputs and HIGH & LOW EQ controls
- High-definition DSP with 24-bit converters and FIR filters
- 5 DSP presets (MUSIC, LIVE, DJ, MONITOR, SPEECH)
- BLUETOOTH audio interface with STEREO LINK
- Color LCD display for the DSP editing
- SPL MAX: 129 dB
- Frequency response: 45 Hz - 20 kHz
- Lightweight, compact and ultra-durable PP cabinet
- 2 ergonomic handles for effortless transportation
- Slanted shape for the use as a stage monitor
- Four M10 flying points

DIVA15A

System type	2-way vented enclosure
High Frequency Device	1" compression driver with 1.35" voice coil and titanium diaphragm
Low Frequency Device	15" woofer with 2.5" VC
Angular Coverage	90° H x 60° V
Total Peak Power	1000 W
HF Amplifier Continuous Power	100 W Class AB
LF Amplifier Continuous Power	400 W Class D
Power Supply	SMPS
System Processing	DSP
Frequency Response	45 Hz - 20 kHz
Max SPL	129 dB
Inputs	2 x MIC/LINE (COMBO), 1 x STEREO LINE (MINIJACK), 2 x USB WIRELESS
Outputs	1 x selectable MIX OUT / CH1 LINK (M-XLR)
Controls	CHANNEL LEVEL, INPUT SELECTOR, HIGH & LOW EQ, ROTARY PUSH ENCODER, COLOR LCD
Bluetooth	Version 5.0, Audio Streaming, STEREO LINK (TWS)
Power Supply	100-120 V ~ or 220-240 V ~ at 50/60 Hz with self-switch
Rated Consumption*	300 W
GENERAL SPECIFICATIONS	
Floor Monitor Angle	45°
Flying System	4 x M10 - top/bottom
Cabinet Material	Polypropylene
Handles	1 x top, 1 x side
Mounting Pole	1 x bottom
Dimensions (W x H x D)	421 x 696 x 382 mm
Weight	19.0 kg (41.8 lb)

* Rated consumption is measured with pink noise with a crest factor of 12 dB, this can be considered a standard music program.



Two ergonomic handles



Powerfull DSP Engine with delay adjustment



Four professional wheels for easy transportation



DIVASUB18A NEW

- Compact active subwoofer
- High efficiency custom 18" woofer with 3" VC
- 1500W peak power
- STEREO input and output
- High-definition DSP with 24-bit converters
- 2 presets (FLAT/BOOST) and 2 modes of use (NORMAL/CARDIOD)
- DELAY selection up to 10mt
- LCD display for DSP editing
- MAXIMUM SPL 132dB
- Frequency response 35 Hz – 160 Hz

DIVASUB18A	
System type	Vented enclosure subwoofer
Loudspeaker	18" woofer with 3" VC
Amplifier Continuous Power	750 W
Amplifier Peak Power	1500 W
Frequency Response	35 Hz - 160 Hz
Max SPL	132 dB
Connectors	IN: 2 x NEUTRIK COMBO OUT: 2 x NEUTRIK XLR-M
Controls	LCD DIAL
Power Supply	230 VAC or 115 VAC 50/60 Hz
Weight	38 kg (83.77 lb)
Cabinet	15/18 mm plywood Black anti-scratch paint 1.5 mm metal grille 2 handles 1 x pole socket 4 x 75 mm wheels
Dimensions (W x H x D)	510x650x650 (without wheels) mm 510x650x752 (with wheels) mm



FLASH SERIES

FLASH5AV2 FLASH5PV2



- Bi-amplified 2-way system
- Studio-grade dome tweeter on elliptical waveguide
- 5" woofer with PP cone
- 200W total peak power
- SPL MAX 114 dB
- Frequency response 70 Hz - 20 kHz
- Passive version available in BLACK (FLASH5P) and WHITE (FLASH5PW)

PASSIVE	FLASH5PV2
Nominal Impedance	16 Ω
Power Continuous (AES)	80 W
Power Program	
Power Peak	160 W
Frequency Response	80 Hz - 20 kHz
Sensitivity	91 dB @ 1 W/1 m
Crossover Frequency	3000 Hz
Connectors	Push terminals
Weight	2.5 kg (5.5 lb)
GENERAL SPECIFICATIONS	
Floor Monitor Angle	42°
Flying System	3 x M6 - top/bottom
Cabinet Material	Polypropylene
Handles	1 x top
Pole Socket	-
Dimensions (W x H x D)	175 x 265 x 176.5 mm

ACTIVE	FLASH5AV2
System type	2-way vented enclosure
High Frequency Device	Soft dome tweeter on elliptical waveguide
Low Frequency Device	5 woofer with PP cone
Angular Coverage	90° H x 60° V
Total Peak Power	200 W
HF Amplifier Continuous Power	20 W Class AB
LF Amplifier Continuous Power	80 W Class D
Power Supply	Linear
Processing	Analog
Frequency Response	70 Hz - 20 kHz
Max SPL	114
Connectors	IN/LINK: XLR F, 1/4 JACK, 2 x RCA
Controls	LEVEL, NEARFIELD/MIDFIELD, GND LIFT
Power Supply	230 VAC or 120 VAC 50/60 Hz
Weight	3.6 kg (7.9 lb)

OPTIONAL ACCESSORIES



- SNWH**
ABS installation bracket for FLASH5PW (white)
- SNBK**
ABS installation bracket for FLASH5P (black)

KPTFL5 KPTFL5W



Brackets for FLASH5 Black and White

- KPTLTP
- KPTLTPW



Bracket for FLASH8XP and FLASH12XP



LT SERIES

The LITE Series by PROEL is an extended range of active and passive speaker systems with plywood cabinet offering the renowned **PROEL sound** and a **high-level performance** in a reliable and affordable package.

For the construction of the cabinets we have used **plywood**, a very lightweight and durable material that makes moving and installing these speakers very quick and easy. Strong, anti-scratch paint and steel grilles with an internal foam layer provide proper **protection** for years of service.



LT812A

- 3-way SAT + SUB active loudspeaker system
- SAT: 1" compression driver + 8" woofer with 1.5" VC
- SUB: 12" woofer with 3" VC
- 1600W peak power
- SPL MAX 121dB + 124dB
- Frequency response 45 Hz - 20 kHz
- Two SPEAKON power cables included

	LT812SAT	LT812SUB
System type	2-way vented enclosure	Vented sub-woofer
High Frequency Device	1" compression driver with 1" VC	-
Low Frequency Device	8" woofer with 1.5" VC	12" woofer with 3" voice coil
Angular Coverage	60° H x 40° V	-
Max SPL	121	124
System Frequency Response	45 Hz - 20 kHz	
Amplifier Total Peak Power	1600 W	
Amplifier Continuous Power	SAT: 2 x 200 W Class AB - SUB: 400 W Class D	
Power Supply	SMPS	
Processing	Analog	
Controls	SUB LEVEL, GND LIFT	
Connectors	1 x SPEAKON	IN: 2 x COMBO, LINK: 2 x XLR M OUT: 2 x SPEAKON
Cabinet construction	Plywood with anti-scratch paint	Plywood with anti-scratch paint
Cabinet Colour	Black	Black
Handles	1 x rear	2 x sides
Mounting Pole	1 x bottom, dual angle	1 x top
Power Supply	230 VAC or 120 VAC 50/60 Hz with LINE VOLTAGE selector	
Dimensions (W x H x D)	220 x 442 x 260 mm	475 x 462 x 610 mm
Weight	7.5 kg / 16.5 lbs.	34 kg / 74.9 lbs.



Easy and effortless transportation of the whole system



3-channel CLASS D+AB lightweight and powerful amplifier module

OPTIONAL ACCESSORIES



COVERLT812A

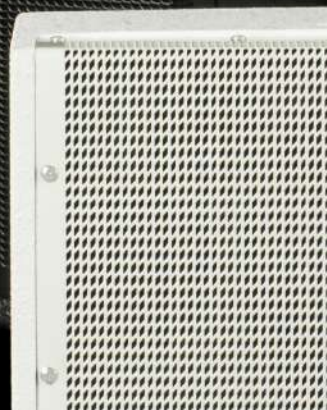
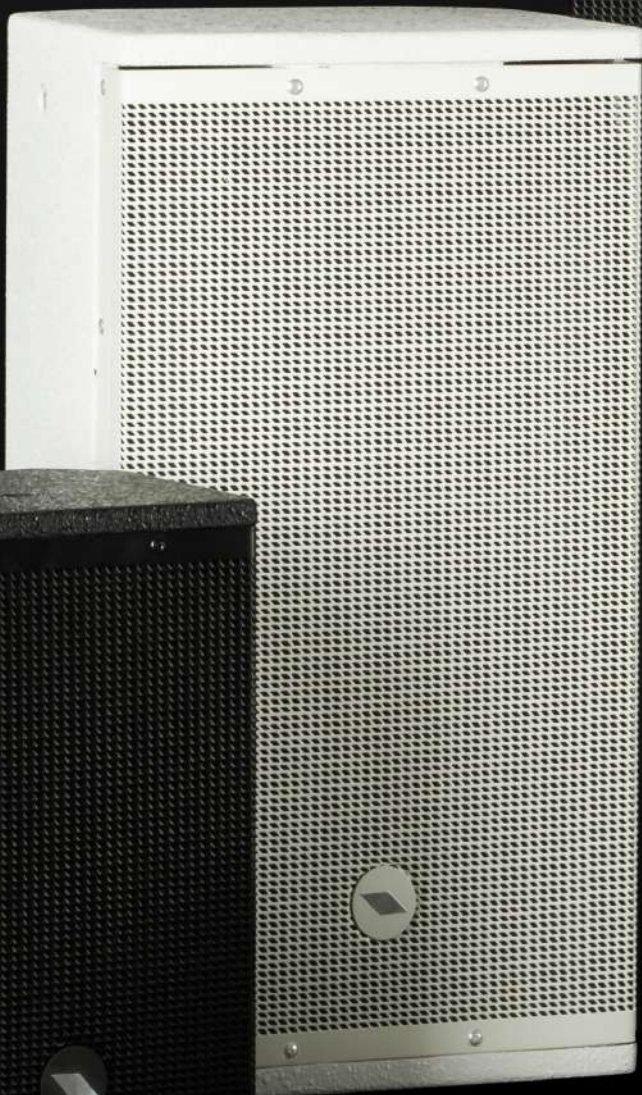
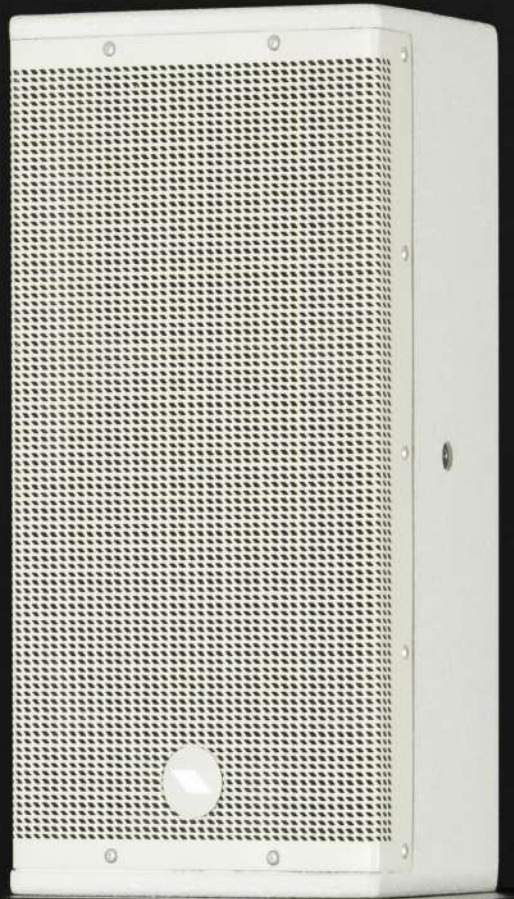


4
YEARS
WARRANTY

2 years standard warranty
+ 2 years extended warranty

PROEL

The warranty is provided by PROEL on the website www.proel.com within 6 months from the date of purchase.

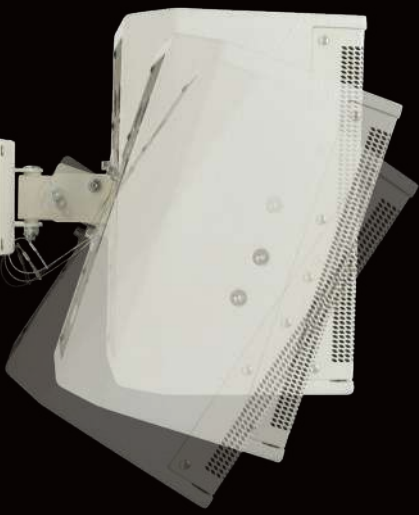


LTX SERIES

LTX is a complete series of active and passive speakers designed specifically for a wide range of commercial and residential installations. The speaker systems are hosted in rugged plywood enclosures available in black or white and offering a refined and unobtrusive aesthetics, capable of fitting into any environment. All the cabinets feature multiple suspension points and dedicated accessories for a wide choice of mounting options. For the high frequency reproduction we have designed symmetrical 90x90° dispersion horns, able to provide constant coverage for large audiences in both vertical and horizontal installations, and detailed response with low distortion. The high-excursion woofers, together with carefully tuned vented cabinets, offer an extended response with deep and tight basses.

The active versions are powered by amplifiers featuring the latest technologies for amplification, such as Switch Mode Power Supply and CLASS D output stages, and providing a massive amount of power with reduced size and weight. They include a sophisticated pre-amp section with up to 24 dB/oct. phase aligned crossover filters and active EQ filters for the system's fine tuning, together with POWERCON mains connectors. The HF and LF independent LIMITER circuits ensure an undistorted sound even at the loudest level and a total loudspeaker protection.





LTX6A **NEW**

LTX6AW **NEW**

- 1" neodymium tweeter
- 6.5" woofer
- 90° H x 90° V coverage
- 320 W peak power amplifier
- Frequency response 75 Hz - 20 kHz
- SPL max peak 110 dB



LTX8A **NEW**

LTX8AW **NEW**

- 1" compression driver
- 8" woofer
- 90° H x 90° V coverage
- 320W peak power amplifier
- Frequency response 70 Hz - 20 kHz
- SPL max peak 121 dB





LTX10A **NEW**
LTX10AW **NEW**

- 1" compression driver
- 10" woofer
- 90° H x 90° V coverage
- 600 W peak power amplifier
- Frequency response 60 Hz - 20 kHz
- SPL max peak 123 dB



LTX12A **NEW**
LTX12AW **NEW**

- 1" compression driver
- 12" woofer
- 90° H x 90° V coverage
- 600 W peak power amplifier
- Frequency response 50 Hz - 20 kHz
- SPL max peak 124 dB



**OPTIONAL
ACCESSORIES**



KPTLTP



KPTLTPW



**KPTLT10
KPTLT12**



**KPTLT10W
KPTLT12W**



LTX6P **NEW**

LTX6PW **NEW**

- 1" neodymium tweeter
- 6.5" woofer
- 90° H x 90° V coverage
- 160 W peak power handling
- Frequency response 75 Hz - 20 kHz
- SPL 1w/1m 88 dB



LTX8P **NEW**

LTX8PW **NEW**

- 1" compression driver
- 8" woofer
- 90° H x 90° V coverage
- 160 W peak power handling
- Frequency response 70 Hz - 20 kHz
- SPL 1w/1m 92 dB





LTX10P **NEW**

LTX10PW **NEW**

- 1" compression driver
- 10" woofer
- 90° H x 90° V coverage
- 500W peak power handling
- Frequency response 60 Hz - 20 kHz
- SPL 1w/1m 94 dB



LTX12P **NEW**

LTX12PW **NEW**

- 1" compression driver
- 12" woofer
- 90° H x 90° V coverage
- 500W peak power handling
- Frequency response 50 Hz - 20 kHz
- SPL 1w/1m 96dB



OPTIONAL ACCESSORIES



KPTLTP



KPTLTPW



**KPTLT10
KPTLT12**



**KPTLT10W
KPTLT12W**



GENERAL SPECIFICATIONS

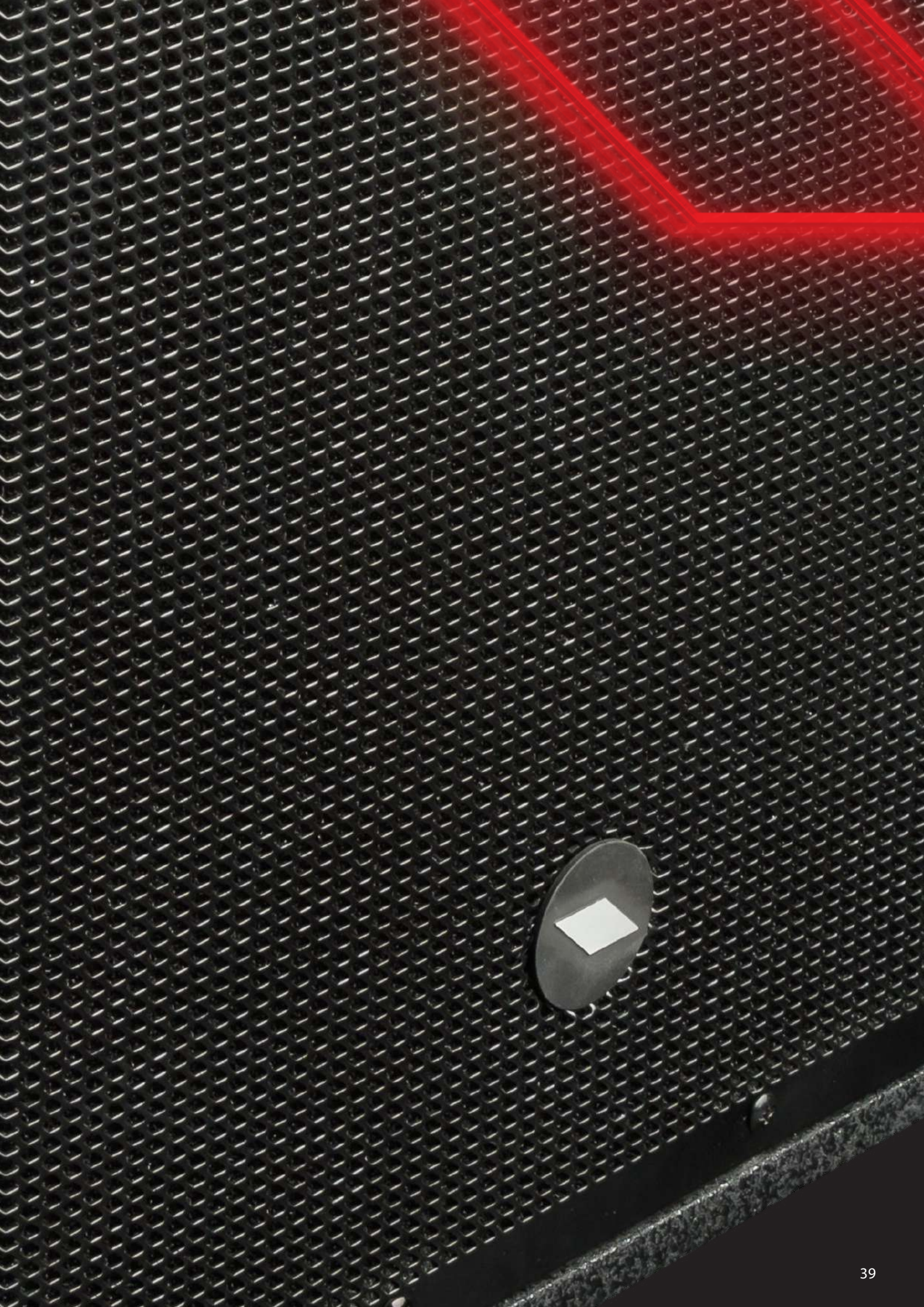
	LTX6	LTX8	LTX10	LTX12
System type	2-way vented enclosure	2-way vented enclosure	2-way vented enclosure	2-way vented enclosure
High Frequency Device	1" neodymium tweeter	1" compression driver with 1"VC	1" compression driver with 1"VC	1" compression driver with 1"VC
Low Frequency Device	6.5" woofer with 1"VC	8" woofer with 1.5"VC	10" woofer with 2" voice coil	12" woofer with 2.5" voice coil
Angular Coverage	90° H x 90° V	90° H x 90° V	90° H x 90° V	90° H x 90° V
Flying System	4 x M8, 3 x M6	3 x M8, 3 x M6	4 x M8, 3 x M6	4 x M8, 3 x M6
Construction	Plywood	Plywood	Plywood	Plywood
Handles	-	1 x rear	1 x rear	1 x rear
Mounting Polee	-	1 x bottom	1 x bottom	1 x bottom
Mounting Bracket	Tilt and Swivel bracket (included) C-shape bracket (optional)	Tilt and Swivel bracket (included) C-shape bracket (optional)	Tilt and Swivel bracket (optional) C-shape bracket (optional)	Tilt and Swivel bracket (optional) C-shape bracket (optional)
Dimensions (W x H x D)	205 x 318 x 200 mm	227 x 442 x 220 mm	295 x 515 x 280 mm	345 x 595 x 300 mm

ACTIVE VERSIONS

	LTX6A - LTX6AW	LTX8A - LTX8AW	LTX10A - LTX10AW	LTX12A - LTX12AW
Total peak power	320 W	320 W	600 W	600 W
HF Amplifier Continuous Power	80 W Class D	80 W Class D	50 W Class AB	50 W Class AB
LF Amplifier Continuous Power	80 W Class D	80 W Class D	250 W Class D	250 W Class D
Power Supply	SMPS	SMPS	SMPS	SMPS
Processing	Analog	Analog	Analog	Analog
Frequency Response	75 Hz – 20 kHz	70 Hz – 20 kHz	60 Hz – 20 kHz	50 Hz – 20 kHz
Max SPL	110 dB	121 dB	123 dB	124 dB
Connectors	IN: COMBO, LINK: XLR M	IN: COMBO, LINK: XLR M	IN: COMBO, LINK: XLR M	IN: COMBO, LINK: XLR M
Controls	LEVEL	LEVEL	LEVEL	LEVEL
Power Supply	100 – 240 VAC 50/60 Hz	100 – 240 VAC 50/60 Hz	230 or 115 VAC 50/60 Hz	230 or 115 VAC 50/60 Hz
Weight	4.5 kg / 9.9 lbs	7.0 kg / 15.4 lbs	12.0 kg / 26.5 lbs	15.0 kg / 33.1 lbs

PASSIVE VERSIONS

	LTX6P - LTX6PW	LTX8P - LTX8PW	LTX10P - LTX10PW	LTX12P - LTX12PW
Power Rating Continuous	80 W	160 W	250 W	250 W
Power Rating Peak	160 W	320 W	500 W	500 W
Impedance	8 ohm	8 ohm	8 ohm	8 ohm
Frequency Response	75 Hz – 20 kHz	70 Hz – 20 kHz	60 Hz – 20 kHz	50 Hz – 20 kHz
SPL (1w / 1m)	88 dB	92 dB	94 dB	96 dB
Connectors	2 x SPEAKON	2 x SPEAKON	2 x SPEAKON	2 x SPEAKON
Weight	4.45 kg / 9.8 lbs	6.95 kg / 15.3 lbs	11.7 kg / 25.8 lbs	14.8kg / 32.6 lbs





S SERIES



PROEL introduces the **S Series**, a new range of compact and powerful sub-woofers designed to complement PROEL full-range passive or active speakers. The **variety of size, power and SPL** offered by the four S models provides, at an unbeatable price point, the perfect low extension solution for any speaker model available in the PROEL range.

All the S models feature high-excursion woofers in a **Hybrid Band Pass configuration (HBP)**. This innovative design provides a higher efficiency compared to direct radiation sub-woofers and, in addition, guarantees a much better coupling of the tuning ducts with the external air, reducing the distortion and the air turbulence, for a **more defined sound and deep and punchy lows**.

The new **CLASS D** amplifier modules with SMPS (Switch Mode Power Supply) can generate a massive amount of continuous power in a compact, lightweight and reliable package. All the modules include a **STEREO pre-amp section**, 24dB/oct. crossover filters with selectable frequency and PHASE reverse switch.

The cabinets are built with 15/18mm plywood and finished with **extra-durable polyurethane paint**. They feature two flush handles and four sturdy 75mm wheels for an easy transport (S15 and S18 only).



S18A

- Compact active HBP sub-woofer
- 18" woofer with 3"VC for a deep and extended response
- 1200W peak power
- STEREO input, link and output
- SPL MAX 131 dB
- Frequency response 36 Hz - 140 Hz
- Passive version available (S18P)



S15A

- Compact active HBP sub-woofer
- 15" woofer with 2.5"VC for a deep and extended response
- 1200 W peak power
- STEREO input, link and output
- SPL MAX 129 dB
- Frequency response 40 Hz - 160 Hz
- Passive version available (S15P)



Lightweight and rugged plywood cabinets with extra-durable polyurethane paint



STEREO preamp section with selectable frequency 24dB/oct. crossover filters



High-excursion woofers in Hybrid Band Pass (HBP) configuration



High-efficiency, lightweight and reliable CLASS D amplifier modules with SMPS



S12A

- Compact active HBP sub-woofer
- 12" woofer with 2.5"VC for a deep and extended response
- 1200 W peak power
- STEREO input, link and output
- SPL MAX 128 dB
- Frequency response 43 Hz - 160 Hz



Compact cabinet profile that fits perfectly on any stage and in any fixed installation



S10A

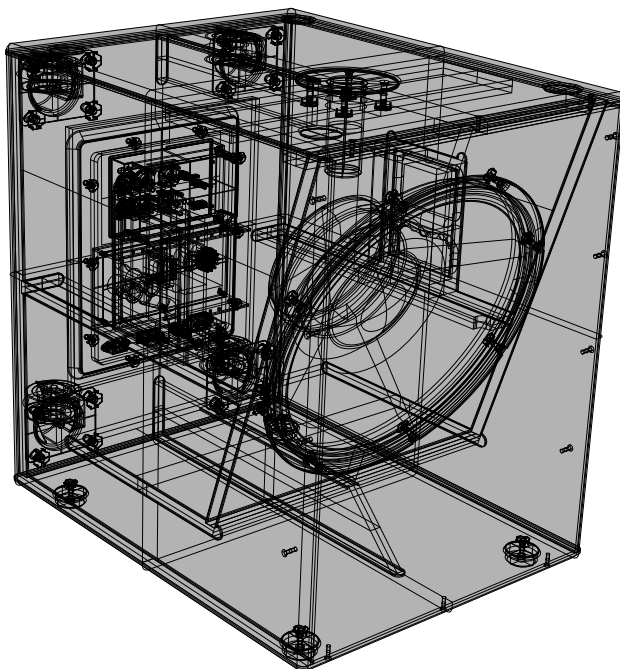
- Compact active HBP sub-woofer
- 10" woofer with 2"VC for a deep and extended response
- 700 W peak power
- STEREO input, link and output
- SPL MAX 119 dB
- Frequency response 46 Hz - 160 Hz
- Passive version available (S10P)

ACTIVE	S10A	S12A	S15A	S18A
System type	Hybrid Band Pass subwoofer	Hybrid Band Pass subwoofer	Hybrid Band Pass subwoofer	Hybrid Band Pass subwoofer
Loudspeaker	10" woofer with 2" VC	12" woofer with 2.5" VC	15" woofer with 2.5" VC	18" woofer with 3" VC
Amplifier Continuous Power	350 W	600 W	600 W	600 W
Frequency Response	46 Hz - 160 Hz	43 Hz - 160 Hz	40 Hz - 160 Hz	36 Hz - 140 Hz
Max SPL	119 dB	127dB	129dB	131 dB
Connectors	IN: 2 x NEUTRIK COMBO OUT: 2 x NEUTRIK XLR-M LINK: 2 x NEUTRIK XLR-MIN: 2 x NEUTRIK COMBO OUT: 2 x NEUTRIK XLR-M LINK: 2 x NEUTRIK XLR-M	IN: 2 x NEUTRIK COMBO OUT: 2 x NEUTRIK XLR-M LINK: 2 x NEUTRIK XLR-MIN: 2 x NEUTRIK COMBO OUT: 2 x NEUTRIK XLR-M LINK: 2 x NEUTRIK XLR-M	IN: 2 x NEUTRIK COMBO OUT: 2 x NEUTRIK XLR-M LINK: 2 x NEUTRIK XLR-MIN: 2 x NEUTRIK COMBO OUT: 2 x NEUTRIK XLR-M LINK: 2 x NEUTRIK XLR-M	IN: 2 x NEUTRIK COMBO OUT: 2 x NEUTRIK XLR-M LINK: 2 x NEUTRIK XLR-MIN: 2 x NEUTRIK COMBO OUT: 2 x NEUTRIK XLR-M LINK: 2 x NEUTRIK XLR-M
Controls	Volume, GND lift X-over Frequency, Phase	Volume, GND lift X-over Frequency, Phase	Volume, GND lift X-over Frequency, Phase	Volume, GND lift X-over Frequency, Phase
Power Supply	230 VAC or 120 VAC 50/60 Hz	230 VAC or 120 VAC 50/60 Hz	230 VAC or 120 VAC 50/60 Hz	230 VAC or 120 VAC 50/60 Hz
Weight	14 kg (30.8lb)	19 kg (41.9 lb)	26 kg (57.3 lb)	34.5 kg (76 lb)

PASSIVE	S10P	S15P	S18P
Nominal Impedance	8 Ω	8 Ω	8 Ω
Power Continuous (AES)	200 W	400 W	500 W
Power Program	400 W	800 W	1000 W
Power Peak	800 W	1600 W	2000 W
Frequency Response	46 Hz - 160 Hz	40 Hz - 160 Hz	36 Hz - 160 Hz
Sensitivity	95 dB @ 1 W/1 m	97 dB @ 1 W/1 m	98 dB @ 1 W/1 m
Connectors	2 x NEUTRIK SPEAKON (IN/LINK)	2 x NEUTRIK SPEAKON (IN/LINK)	2 x NEUTRIK SPEAKON (IN/LINK)
Weight	12.5 kg (27.5 lb)	24.5 kg (54 lb)	33 kg (72.7 lb)

GENERAL SPECIFICATIONS

	S10A	S12A	S15A	S18A
Cabinet	15/18 mm plywood Black anti-scratch paint 1.5 mm metal grille 2 handles 1 x pole socket	15/18 mm plywood Black anti-scratch paint 1.5 mm metal grille 2 handles 1 x pole socket	15/18 mm plywood Black anti-scratch paint 1.5 mm metal grille 2 handles 1 x pole socket 4 x 75 mm wheels	15/18 mm plywood Black anti-scratch paint 1.5 mm metal grille 2 handles 1 x pole socket 4 x 75 mm wheels
Dimensions (W x H x D)	315x420x495 mm	360x500x520 mm	435x570x560 mm	508x630x645 mm



OPTIONAL ACCESSORIES



COVERS10



COVERS12



COVERS15



COVERS18



WX SERIES



WX series stage monitors, with a perfect sound intelligibility, a high SPL and an ultra-compact format, can offer a **professional yet affordable monitoring solution able to fit into stages of any size.**

The transducers' **coaxial** design not only provides an optimal HF and LF alignment and a controlled directivity for a perfect listening from any position, but it also helps to minimize the size of the monitor. The **ultra-compact enclosures**, with integrated handle and pole socket, have been designed to feature a very low profile and, therefore, a minimal footprint on stage. The cabinets are finished with **extra-strong polyurethane painting**, making them resistant to any abuse.

The lightweight **500W CLASS D amplifier module** with SMPS provides a high output that results in an unexpected SPL for such small loudspeakers. The sophisticated analogue processing provides a detailed response, particularly in the vocal range, and a remarkable resistance to feedback. **Two EQ PRESETS** are available for the use of the speaker not only for stage monitoring (MONITOR), but also as a MAIN SOUND SYSTEM (FOH) if necessary.

The WX monitors are available in **two models**, offering the right solution for different monitoring situations. The ultracompact **WX8A** can provide a high-quality monitoring also in very small spaces and it can give its best with speech, vocals and acoustic instruments. **WX10A**, with a higher SPL and a full-range response, is ideal for vocals, guitar, horns and electronic instruments or as a monitor for DJs.



WX8A

- Active 2-way coaxial stage monitor
- 1" compression driver with 1"VC
- 8" woofer with 2"VC
- 500 W total peak power
- SPL MAX: 122dB
- Frequency response: 80 Hz - 20 kHz



Coaxial speakers for a superior sound definition and an even directivity

WX10A

- Active 2-way coaxial stage monitor
- 1" compression driver with 1"VC
- 10" woofer with 2"VC
- 500 W total peak power
- SPL MAX: 123dB
- Frequency response: 70 Hz - 20 kHz

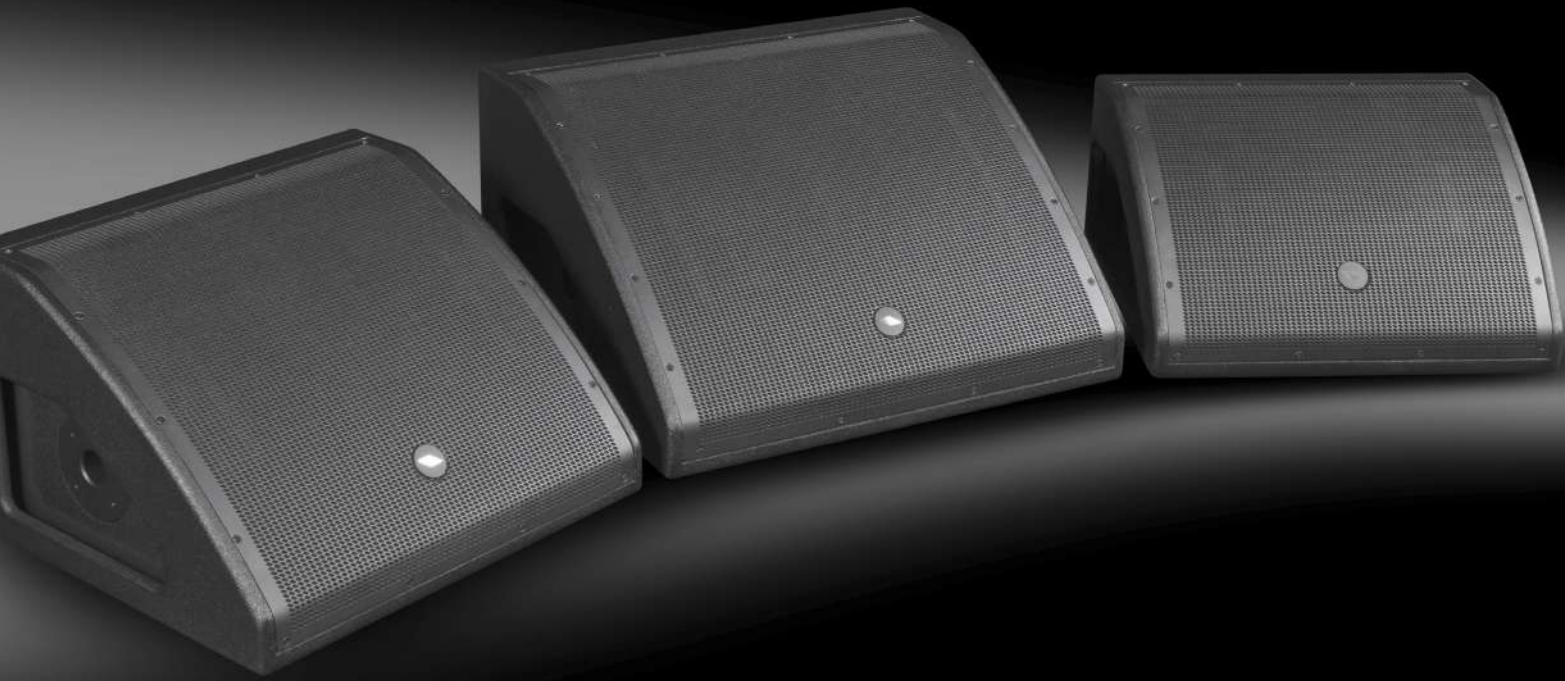


500W CLASS D power amplifiers with MONITOR and FOH EQ presets

	WX8A	WX10A
System type	2-way coaxial vented enclosure	2-way coaxial vented enclosure
High Frequency Device	1" compression driver with 1"VC	1" compression driver with 1"VC
Low Frequency Device	8" woofer with 2"VC	10" woofer with 2"VC
Angular Coverage	80° H x 80° V	80° H x 80° V
Total Peak Power	500 W	500 W
Amplifier Continuous Power	250 W Class D	250 W Class D
Power Supply	SMPS	SMPS
Processing	Analog	Analog
Frequency Response	80 Hz - 20 kHz	70 Hz - 20 kHz
Max SPL	122 dB	123 dB
Connectors	IN: Combo LINK: XLR M	IN: Combo LINK: XLR M
Controls	LEVEL, PRESET selector (MONITOR, FOH), GND lift	LEVEL, PRESET selector (MONITOR, FOH), GND lift
Power Supply	100-240 VAC 50/60 Hz	100-240 VAC 50/60 Hz
Stage Monitor Angle	36°	36°
Cabinet	MDF with black anti-scratch polyurethane paint	MDF with black anti-scratch polyurethane paint
Pole Socket	1 x side	1 x side
Handles	1 x side	1 x side
Dimensions (W x H x D)	325x336x233 mm	390x396x270 mm
Weight	8 kg (17.6 lb)	10 kg (22 lb)



Ultra-strong polyurethanic finishing for maximum strength and durability



WD SERIES V2

In the past few years with the **WEDGE Series** PROEL has set a standard for **affordable and road-proof stage monitors**, able to offer a highly valuable monitoring solution, with **perfect sound intelligibility and high SPL** in low-profile and portable enclosures. The **Version 2** of this very successful series represents a major step forward, with several design's refinements and feature's improvements.

The lightweight **CLASS D amplifier modules with SMPS** have been completely **re-designed**, to provide the utmost reliability even when the system is stressed at the highest sound pressure levels. Coupled to a **sophisticated analog processing**, they provide an extremely detailed response, particularly in the vocal range, and a remarkable resistance to feedback. Two tailored EQ PRESETS are available for the use of the speaker not only for stage monitoring (**MONITOR**), but also as a MAIN SOUND SYSTEM (**FOH**).

The stylish design of the cabinets, with integrated handles, recessed connection panel and pole socket, has been optimized **reducing further the profile** and, therefore, the footprint on the stage. Knowing very well the mistreatments the stage monitors are usually subjected to, we have greatly improved the strength of the cabinets' **polyurethane painting**, making them resistant to any abuse.

Also the **custom designed coaxial transducers**, able to provide a perfect HF and LF alignment and a controlled directivity for a perfect listening from any position, have been updated, especially the 10" that features now a compression driver with increased efficiency.

The V2 WEDGE monitors are available in three models, offering the perfect solution for any monitoring situations. The ultra-compact **WD10AV2** is able to offer a high-performance monitoring also on small stages and it's the ideal solution for speech, vocals and keyboards. **WD12AV2**, with its high SPL and its full-range response, is the favorite choice for vocals, guitar, horns and electronic instruments or as a high-power monitor for DJs. **WD15AV2**, with its full extension and powerful and deep response at the low frequencies, is the ideal monitor for bass and drums players. The horn-loaded HF section and the powerful amplifier make it the perfect solution for monitoring also on very large stages.



WD10AV2

- Active 2-way coaxial stage monitor
- 1" compression driver with 1"VC
- 10" woofer with 2"VC
- 500 W total peak power
- SPL MAX: 123dB
- Frequency response: 60 Hz - 20 kHz



Coaxial speakers for a superior sound definition and an even directivity

WD12AV2

- Active 2-way coaxial stage monitor
- 1" compression driver with 1.35"VC
- 12" woofer with 2.5"VC
- 700 W total peak power
- SPL MAX: 124dB
- Frequency response: 50 Hz - 20 kHz



New-design CLASS D power amplifiers for improved performance and reliability

WD15AV2

- Active 2-way coaxial stage monitor
- 1" compression driver with 1.35" VC on a waveguide
- 15" woofer with 3"VC
- 900 W total peak power
- SPL MAX: 126dB
- Frequency response: 45 Hz - 20 kHz



New ultra-strong polyurethane finishing for maximum strength and durability

	WD10AV2	WD12AV2	WD15AV2
System type	2-way coaxial vented enclosure	2-way coaxial vented enclosure	2-way coaxial vented enclosure
High Frequency Device	1" compression driver with 1"VC	1" compression driver with 1"VC	1" compression driver with 1.35"VC
Low Frequency Device	10" woofer with 2"VC	12" woofer with 2.5"VC	15" woofer with 3"VC
Angular Coverage	80° H x 80° V	80° H x 80° V	60° H x 60° V
Total Peak Power	500 W	700 W	900 W
HF Amplifier Continuous Power	50 W Class AB	50 W Class AB	50 W Class AB
LF Amplifier Continuous Power	200 W Class D	300 W Class D	400 W Class D
Power Supply	SMPS	SMPS	SMPS
Processing	Analog	Analog	Analog
Frequency Response	60 Hz - 20 kHz	50 Hz - 20 kHz	45 Hz - 20 kHz
Max SPL	123 dB	124 dB	126 dB
Connectors	IN: Combo LINK: XLR M	IN: Combo LINK: XLR M	IN: Combo LINK: XLR M
Controls	LEVEL, PRESET selector (MONITOR, FOH), GND lift	LEVEL, PRESET selector (MONITOR, FOH), GND lift	LEVEL, PRESET selector (MONITOR, FOH), GND lift
Power Supply	230 VAC or 120 VAC 50/60 Hz	230 VAC or 120 VAC 50/60 Hz	230 VAC or 120 VAC 50/60 Hz
Stage Monitor Angle	36°	36°	36°
Cabinet	Plywood with black anti-scratch polyurethane paint	Plywood with black anti-scratch polyurethane paint	Plywood with black anti-scratch polyurethane paint
Pole Socket	1 x side	1 x side	1 x side
Handles	2 x side	2 x side	2 x side
Dimensions (W x H x D)	490x265x375 mm	510x310x440 mm	600x335x490 mm
Weight	12 kg (26.4 lb)	15 kg (33 lb)	21 kg (46.3 lb)

OPTIONAL ACCESSORIES



CPWD10V2 - CPWD12V2 CPWD15V2

Wedge series flight case (for 2 unit)

COVERWD10V2 COVERWD12V2 COVERWD15V2

Wedge series padded covers

SESSION 1

SESSION1 is a **portable column system** featuring multiple inputs and a versatile MP3 player with **BLUETOOTH** connectivity. Hosted in lightweight yet ultra-durable polypropylene cabinets, it is composed by a **column with four high-definition 2.5" full-range speakers** and a powerful **8" sub-woofer**. The **state-of-the-art electronics** includes a sophisticated pre-amp section with active filtering and dual CLIP LIMITERS, and a powerful 2-channel **400W Class D** power amplifier.

The built-in MEDIA PLAYER is able to play songs from an **SD** card or a **USB MEMORY STICK**, but also from your smartphone or your tablet thru a **BLUETOOTH** connection, without the need of any cable. The built-in **3-channel mixer** allows to connect two microphone or line sources and a stereo player, each one with independent level controls. A digital EFFECT is also available for microphone inputs. With a simple knob is possible to **optimize** the sound for speech, music or low boost applications, adapting the system to any situation.

SESSION1 can be used in a variety of applications, ranging from **speech diffusion** and **music playback** to **live music** and **DJ sets**.



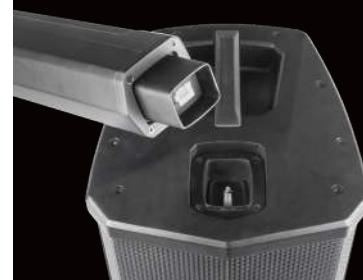
SESSION1

SESSION1FREE

- Active portable column system
- Column with four high-definition 2.5" full-range speakers
- 8" long-excursion subwoofer
- Fast-linking system and integrated power connections to adjust the column to the desired height
- 2-channel 400 W peak Class D power amplifier with SMPS
- Sophisticated pre-amp section with active filtering and dual CLIP LIMITERS
- Built-in 3-channel mixer with MIC/LINE inputs and digital EFFECT
- Sub level control (SPEECH/MUSIC/BOOST)
- USB/SD MEDIA PLAYER with BLUETOOTH audio interface with STEREO LINK
- SPL MAX: 108 dB
- Frequency response: 50 Hz - 18 kHz
- Lightweight, compact and ultra-durable PP cabinet
- Padded bag for the 3-pcs column included
- 8000 mAh Li-ion battery (SESSION 1 FREE)



A padded bag for the 3 pieces column speaker transportation is included.



Fast-coupling system with integrated power signal link

MIXER SECTION

MONO inputs	2 x MIC/LINE IN (XLR-F + 1.4" JACK)
STEREO input	1 x LINE IN (MINI-JACK)
Outputs	LINE OUT (XLR-M)
Main EQ	SUB LEVEL (SPEECH-MUSIC-BOOST)
Internal Effect	ECHO-DELAY

MULTIMEDIA SECTION

Player Type	USB / SD / WIRELESS AUDIO player with STEREO LINK
Compatible File Formats	MP3, WAV, WMA, APE, FLAC
Control Interface	LCD display, CONTROL buttons

AMPLIFIER SECTION

Total Peak Power	400 W
Continuous Power	200 W
Amplifier Type	Class D
Power Supply	SMPS
Processing	Analog

LOUDSPEAKER SECTION

System Type	Compact powered column system with subwoofer
High Frequency Device	4 x 2.5" (66mm) drivers
Low Frequency Device	8" (200mm) woofer with 1.5" VC
Angular Coverage	90° H x 60° V
Frequency Response	50Hz – 18kHz
Maximum SPL Output	108 dB

GENERAL SPECIFICATIONS

Construction	Polypropylene
Cabinet Colour	Black
Column system	3-pcs with fast-linking system and integral power connections
Handles	1 x subwoofer top
Accessories	Padded bag for 3-pcs column
Dimensions (WxHxD)	*SUB: 318x 400x484.5 mm COLUMN (each piece): 520 X 84 X 97.5 mm"
Weight	21 Kg (complete system)
Power Supply	100 V-240 V ~ 50/60 Hz / 11.1 V 8000 mAh Li-ion battery (SESSION 1 FREE)
Rated Power Consumption	100 W



Built-in 3-channel mixer and MEDIA PLAYER with SD/USB and STEREO BLUETOOTH connection



SESSION4

SESSION4 is a **compact portable array system in an active 2.1 configuration**, including two tops and one subwoofer. Designed for solo performers, small live groups, mobile DJ setups or for music and voice playback in corporate and even home applications, the **SESSION4** combines **flexibility, portability** and **performance** with a professional design and a sturdy plywood construction.

Each top includes **four 2.75" neodymium drivers in vertical array configuration**, featuring a **logarithmic arrangement** and a **progressive down tilt**, for increasing the vertical coverage and providing an accurate sound in any part of the listening area. The sub features **two 6.5" woofers in band-pass configuration**, able to provide **very 'punchy' and dynamic basses**, together with an extended low frequency response.

The system is powered by a **3-channel 1200W Class D amplifier** and it's controlled by the **powerful PROEL CORE LT DSP**, able to deliver an outstanding sound definition. The signal processing includes a sophisticated Dynamic EQ and **4 EQ PRESETS (MUSIC, LIVE, DJ, SPEECH)** to adapt the speakers to any kind of application. The **intuitive control interface** features a single knob and a large LCD display, for controlling not only the DSP parameters but also the two MIC/LINE selectable inputs, the system's configuration and the built-in **BLUETOOTH** audio interface.

The **SESSION4** key features are extreme flexibility and portability, which make it one of the most advanced mobile column systems available. Thanks to a **fast linking system with integrated connections**, the two tops can be combined together, forming a longer 8-driver column and allowing the system to be used not only in **STEREO** mode, but also in **MONO** or **DOUBLE** mode. Two **dedicated compartments** in the sub's cabinet allow the tops to be stored and transported in the unit itself, reducing the space requirement for a better mobility in line with the needs of today's musicians.



SESSION4

- 2.1 processed active system with two TOPS and one SUBWOOFER

TOP

- Four 2.75" neodymium full-range speakers in Vertical Array configuration
- Logarithmic arrangement of the speakers with progressive down tilt for an increased vertical coverage
- Fast-coupling of the two tops with integrated power signal link to obtain a single 8-speaker column

SUB

- Two high-excursion 6.5" woofers in BAND PASS configuration
- Two built-in compartments for hosting the tops, for an easy transport of the whole system

SYSTEM

- Plywood cabinet with black ultra-durable polyurethane paint
- 3-channel Class D SMPS power amplifier, 1200W total peak power
- Two MIC/LINE (XLR-F) inputs
- Control & connection panel on the cabinet's top for an easy access
- High-definition CORE LT DSP with A/D and D/A 24 bit converters and Dynamic EQ
- User-friendly control interface with single knob and large LCD
- 4 DSP presets (MUSIC, LIVE, DJ, SPEECH)
- 3 selectable system's configurations: STEREO, MONO and DOUBLE
- Bluetooth stereo interface
- SPL MAX (system): 122 dB peak
- Frequency response: 45 Hz - 18 kHz



Fast-coupling system with integrated power signal link



Logarithmic speaker arrangement with progressive tilt for increased vertical coverage

SYSTEM	SESSION 4
System Type	Portable Powered 2.1 System with Two Line Array Tops and One Subwoofer
Maximum SPL Output	122 dB peak system output (pink noise)
Frequency Response (-10dB)	45Hz – 18kHz
SPEAKERS	
LF Driver	2 x 6.5" (165mm) woofer in BANDPASS configuration
HF Driver	8 x 2.75" (70mm) neodymium drivers (4 for each TOP)
Coverage Pattern	100° x 50°
AMPLIFIER	
Type	Class D with SMPS
System Power Rating	300 Watts LF, 2x150 Watts HF Continuous, 1200W Peak
Channels	2 MIC/LINE selectable inputs
Connectors	2 x COMBO (INPUTS), 2 x XLR-M (LINK), 2 x SPEAKON (POWER OUTPUTS)
Controls	1 x LCD with Data Encoder
Processing	24bit / 48kHz CORE DSP - 2-band EQ Selectable CONFIGURATION and EQ PRESETS - Digital Limiting
Wireless Audio	Bluetooth built-in receiver
GENERAL SPECIFICATIONS	
Cabinet Material	Plywood
Finishing	High-strength polyurethane black paint
Grille	Powder coated perforated steel
Handles	2 x sides (SUB)
Pole Socket	1 x top M20 (SUB), 1 x bottom 35mm (TOP)
Included Accessories	M20 / 35mm telescopic pole, 4-wire SPEAKON/SPEAKON cable, 2 x SAT cover
AC input	230 VAC or 120 VAC 50/60 Hz with LINE VOLTAGE selector
Dimensions (W x H x D)	TOP: 100x358x100 mm SUB: 420x480x460 mm
Weight	TOP: 1.5 kg (3.3 lbs) SUB: 22 kg (48.5 lbs) SYSTEM: 25 kg (55.1 lbs)



User-friendly control interface with single knob and large LCD



Two built-in spaces for hosting the tops

INCLUDED ACCESSORIES



Pole in two pieces



4-wire speakon cable



SAT cover

OPTIONAL ACCESSORIES



ES01500LU10



FRE300BK



COVERSESSION4



SESSION6

SESSION6, the top-of-the-range model of the series, is a **compact high-power portable array system in an active 2.1 configuration**, including two tops and one subwoofer. Designed for **indoor and outdoor use** in live concerts, mobile DJ setups and corporate applications, the **SESSION6** combines **flexibility, portability and performance** with a professional design and a sturdy plywood construction.

Each top includes **six 3.25" neodymium drivers in vertical array configuration** with **progressive down tilt**, for increasing the vertical coverage. A **custom-designed phase plug** provides an ultra-wide 120° horizontal coverage and guarantees perfect voice intelligibility and accurate sound in any part of the listening area. The sub features **two 10" high-excursion woofers with 2.5" voice coil**, able to provide very 'punchy' and dynamic basses, together with an extended low frequency response and an **impressive SPL**.

The system is powered by a **3-channel 2400W Class D amplifier** and it's controlled by the **powerful PROEL CORE LT DSP**, able to deliver an outstanding sound definition. The signal processing includes a sophisticated Dynamic EQ and **4 EQ PRESETS (MUSIC, LIVE, DJ, SPEECH)** to adapt the speakers to any kind of application. The **intuitive control interface** features a single knob and a large LCD display, for controlling not only the DSP parameters but also the two MIC/LINE selectable inputs, the system's configuration and the built-in **BLUETOOTH** audio interface.

Thanks to the innovative **die-cast fast linking system with integrated connections**, the two tops can be combined together, forming a longer 12-driver column and allowing the system to be used not only in **STEREO** mode, but also in **MONO** or **DOUBLE** mode, for an extreme flexibility.

A **dedicated padded bag** is included for storing and transporting the two columns and the provided pole and speaker cable, for the maximum portability.



SESSION 6

- 2.1 processed active system with two TOPS and one SUBWOOFER
- TOP**
- Six 3.25" neodymium full-range speakers in Vertical Array configuration
 - Progressive down tilt for an increased vertical coverage
 - Custom designed phase plug for ultra-wide 120° horizontal coverage
 - Fast-coupling of the two tops with integrated power signal link to obtain a single 12-speaker column

SUB

- Two high-excursion 10" woofers with 2.5" voice coil

SYSTEM

- Plywood cabinet with black ultra-durable polyurethane paint
- 3-channel Class D SMPS power amplifier, 2400W total peak power
- Two MIC/LINE (XLR-F) inputs
- Control & connection panel on the cabinet's top for an easy access
- High-definition CORE LT DSP with A/D and D/A 24 bit converters and Dynamic EQ
- User-friendly control interface with single knob and large LCD
- 4 DSP presets (MUSIC, LIVE, DJ, SPEECH)
- 3 selectable system's configurations: STEREO, MONO and DOUBLE
- Bluetooth stereo interface
- SPL MAX (system): 128 dB peak
- Frequency response: 38 Hz - 20 kHz



Die-cast fast-coupling system with integrated power signal link



Progressive tilt and custom phase plug for increased vertical and horizontal coverage

SYSTEM	SESSION 6
System Type	Portable Powered 2.1 System with Two Line Array Tops and One Subwoofer
Maximum SPL Output	128 dB peak system output (pink noise)
Frequency Response (-10dB)	38Hz – 20kHz
SPEAKERS	
LF Driver	2 x 10" (254mm) woofer in BANDPASS configuration
HF Driver	12 x 3.25" (89mm) neodymium drivers (6 for each TOP)
Coverage Pattern	120° x 60°
AMPLIFIER	
Type	Class D with SMPS
System Power Rating	600 Watts LF, 2x300 Watts HF Continuous, 2400W Peak
Channels	2 MIC/LINE selectable inputs
Connectors	2 x COMBO (INPUTS), 2 x XLR-M (LINK), 2 x SPEAKON (POWER OUTPUTS)
Controls	1 x LCD with Data Encoder
Processing	24bit / 48kHz CORE DSP - 2-band EQ Selectable CONFIGURATION and EQ PRESETS - Digital Limiting
Wireless Audio	Bluetooth built-in receiver
GENERAL SPECIFICATIONS	
Cabinet Material	Plywood
Finishing	High-strength polyurethane black paint
Grille	Powder coated perforated steel
Handles	2 x sides (SUB)
Pole Socket	1 x top M20 (SUB), 1 x bottom 35mm (TOP)
Included Accessories	M20 / 35mm telescopic pole, 4-wire SPEAKON/SPEAKON cable, PADDED BAG for SAT
AC input	230 VAC or 120 VAC 50/60 Hz with LINE VOLTAGE selector
Dimensions (W x H x D)	TOP: 112x616x132 mm SUB: 420x580x490 mm
Weight	TOP: 4.5 kg (9.9lbs) SUB: 26.5 kg (58.4 lbs)

INCLUDED ACCESSORIES

OPTIONAL ACCESSORIES



Telescopic pole



4-wire speakon cable



SAT padded bag



ES01500LU10



FRE300BK



COVERSESSION6



User-friendly control interface with single knob and large LCD



Padded bag for transporting the tops

FREEONEX

All-in-one battery-powered personal PA system featuring multiple inputs and **BLUETOOTH** connectivity. Hosted in a compact, lightweight yet ultra-durable polypropylene cabinet with **multiple aiming positions**, it represents the perfect solution for musicians, DJs and general PA users. An array of **three high-definition 2" HF speakers** coupled with a **powerful 6" LF woofer** provides a consistent tonal balance, a strong output level over distance and a wide coverage of large audiences. The **state-of-the-art electronics** includes a sophisticated pre-amp section with DSP processor and a powerful **150W + 50W Class D** power amplifier. The built-in 2 mono + 1 stereo channel **digital mixer** allows to connect **two microphones or instruments** and a stereo player, each one with independent level controls. A 2-band EQ and a studio-grade **digital REVERB** is also available for microphone/instrument inputs.

The built-in **BLUETOOTH** connection allows to stream high quality audio from portable devices without the need of any cable.

The **built-in Li-ion battery** provides up to **10 hours** of mains-free continuous operation, for the maximum freedom of use.





Vertical angle positioning

FREEONEX NEW

- 3 CH mixer with 2 x MIC/GUIT/LINE IN and 1 x STEREO LINEIN
- Two band EQ for channel 1 and 2
- Studio grade Digital REVERB
- LINE OUT for connecting an additional P.A. system
- Stereo BLUETOOTH interface
- USB port for external devices charging
- High performance Lythium Ion battery powered



Standard 35 mm pole

FREEONEX

System type	2-way vented enclosure with HF array
High Frequency Device	3 x 2 in
Low Frequency Device	1 x 6 in
Frequency response (-3 dB)	60 Hz – 18 kHz
Max. SPL	115 dB
Coverage angle (H x V)	120° x 50°
Total peak power	400 W
HF continuous power	50 W class D
LF continuous power	150 W class D
Input Connectors	2 x XLR/TRS Combo (balanced) 1 x 3.5mm Jack Stereo
Output Connectors	1 x 6.35mm Jack (unbalanced) 1 x USB type A Charge port
Input Channels	2x MIC/LINE 1x LINE/BT
Mic/Line Controls	Reverb, Low, High, Level
Stereo in/Bluetooth Controls	Pair, Level
Processing	32bit DSP, 24bit AD/DA
Bluetooth	Protocol 5.0, Audio Streaming
Enclosure material	Polypropylene
Finish	Black Textured
Grille material	Powder coated steel
Handles	1 x top
Mounting Pole	1 x bottom
Dimensions (H x W x D):	320 mm x 240 mm x 290 mm 12.59 in x 9.45 in x 11.42 in
Weight	7.5 kg 16.53 lb
USB charging	2 A max
Power Supply	100 – 240 V~, 50 / 60 Hz
Consumption	150 W
Battery type	Rechargeable Lithium-ion 6000mAh
Battery play time (at medium level)	up to 10 hours
Recharging time	less than 4 hours

OPTIONAL ACCESSORIES



COVERFREEONEX



FREEPASS10USB

FREEPASS10USB is an **all-in-one sound system** combining in an **ultra-portable, easy-to-use package** everything musicians and other PA users need for playing: a full-featured **mixer**, a versatile **MP3 player**, a powerful **CLASS D amplifier**, two full-range **speakers** and high-quality connection **cables**.

FREEPASS10USB is a complete PA system that, even if compact in size, quick to setup and simple to use, is packed with a **full set of features** and delivers an unexpected **sound quality** for this kind of systems. The **8-channel, 2x250W powered mixer** fits perfectly in one of the two speakers and it can be used as it is or detached with a simple operation. The second speaker includes a convenient and large compartment that can contain all the connection cables and other accessories. Two **high-quality PROEL speaker cables** with ultra-durable 1/4" metal jack connectors are also provided.

The two speakers, hosted in lightweight PP cabinets, feature a **horn-loaded 1.35" VC compression driver** and a **10" woofer**, able to provide a clean and powerful **full-range sound** with high SPL. A large handle on top of the cabinet and a pole holder on the bottom make transport and installation quick and easy.

Thanks to its versatility and portability, **FREEPASS10USB** can be used in a variety of applications, such as **live gigs** for singers or small bands, **education and sporting events, seminars and presentations**.

FREEPASS10USB

- All-in-one systems with two speakers and detachable power mixer
- 4 MIC/LINE MONO inputs with phantom power
- 2 LINE STEREO inputs
- 2-band channel EQ
- ECHO / DELAY effect
- MUSIC/SPEECH main EQ
- Built-in MP3 player with USB port
- 7-LED VU-METER
- 2-TRACK and MONITOR out
- Dual 250W CLASS D power amplifier with SMPS
- 2-way speakers with 1" horn-loaded compression driver and 8" or 10" woofer
- 2 x 7.5mt. PROEL power cables with metal ¼" JACK
- Convenient accessory compartment



Detachable powered mixer with 8 inputs and 500W amplifier



Convenient compartment for the system's cables and other accessories

FREEPASS10USB

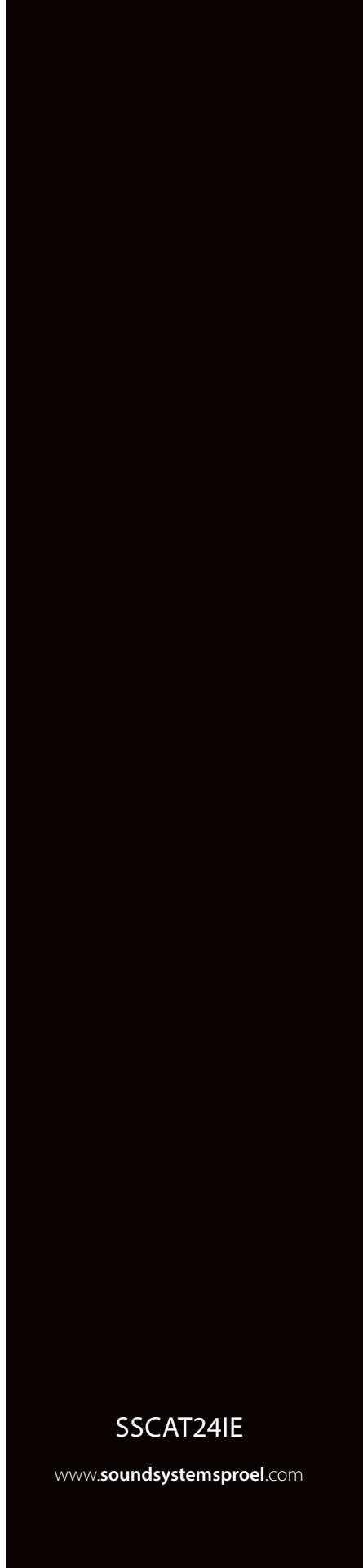
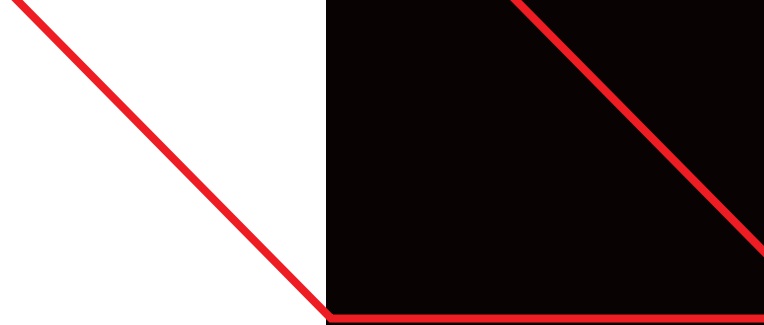
MIXER SECTION	
MONO inputs	(4) MIC IN (XLR-F) + LINE IN (JACK)
STEREO inputs	(2) LINE IN (2xJACK / 2xRCA)
Input EQ	HIGH: +/- 15dB 10 kHz, LOW: +/- 15dB 100 Hz
PHANTOM power	+ 15 V (CH 1-4)
Internal Effect	ECHO (CH 1-4)
Outputs	MONITOR OUT (2xJACK), SUB OUT (1xJACK), SPEAKER OUT (2xJACK)
Main EQ	VOICE / MUSIC selector
Metering	2x6-LED VU-METER
MULTIMEDIA SECTION	
Player Type	USB
Compatible File Formats	MP3
Control Interface	Control buttons
AMPLIFIER SECTION	
Amplifier Type	Class D with SMPS (Switch Mode Power Supply)
Maximum Output Power	2 x 250 W @ 4 ohm (1 KHz, 1% THD)
Frequency Response	MUSIC: 20 Hz - 20 KHz, VOICE: 80 Hz - 20 KHz
LOUDSPEAKER SECTION	
Loudspeaker System	2-way system vented
High Frequency Device	1" compression driver 1.35" VC - horn loaded
Low Frequency Device	10" woofer with 2" VC
Angular Coverage	90° H x 60° V
Impedance	4 ohm
Frequency Response	65 Hz - 20 kHz (-10 dB)
SPL 1W 1m	95 dB
Cabinet Material	Black polypropylene, metal grille
Handles	1 top
Pole Socket	1 bottom
GENERAL SPECIFICATIONS	
Dimensions	Speaker: 50x32x29 cm / Mixer: 32x18x9 cm
Weight	System: 25 kg / Speaker: 10.6 kg / Mixer: 2.4 kg
Power Supply	230 VAC / 120 VAC (switchable) 50/60 Hz
Power consumption	400 W

Alphabetical Index

CODE	PAGE	CODE	PAGE	CODE	PAGE
BAGMQ12FX	7	FLASH5AV2	29	LTX8P	36
BAGMQ16FX	8	FLASH5PV2	29	LTX8PW	36
COVERDIVA12	27	FRE300BK	51-53	MQ12USB	7
COVERDIVA15	27	FREEONEX	55	MQ16USB	8
COVERFREEONEX	55	FREEPASS10USB	57	PLAYMIX10	6
COVERLT812A	31	KPTFL5	29	PLAYMIX6	5
COVERS10	43	KPTFL5W	29	PLAYMIX8	5
COVERS12	43	KPTFLDIVA12	27	RACKMQ12USB	7
COVERS15	43	KPTFLDIVA15	27	RACKMQ16USB	8
COVERS18	43	KPTLT10	35-37	S10A	42
COVERSESSION4	51	KPTLT10W	35-37	S12A	42
COVERSESSION6	53	KPTLT12	35-37	S15A	41
COVERV10	17	KPTLT12W	35-37	S18A	41
COVERV10FW	19-21	KPTLTTP	29-35-37	SESSION1	49
COVERV12	17	KPTLTPW	29-35-37	SESSION1FREE	49
COVERV12FW	19-21	KPTV10	17	SESSION4	51
COVERV15	17	KPTV12	17	SESSION6	53
COVERV8	17	KPTV15	17	SNBK	29
COVERWD10V2	47	KPTV8	17	SNWH	29
COVERWD12V2	47	LT812A	31	U24B	23-27
COVERWD15V2	47	LTX10A	35	U24H	23-27
CPWD10V2	47	LTX10AW	35	V10FREE	21
CPWD12V2	47	LTX10P	37	V10PLUS	16
CPWD15V2	47	LTX10PW	37	V10WAVE	19
D10A	11	LTX12A	35	V12FREE	21
D10P	11	LTX12AW	35	V12PLUS	17
D20P	11	LTX12P	37	V12WAVE	19
DIVA12A	26	LTX12PW	37	V15PLUS	17
DIVA15A	27	LTX6A	34	V8PLUS	16
DIVASUB18A	28	LTX6AW	34	WD10AV2	47
DPX1200PFC	13	LTX6P	36	WD12AV2	47
DPX1700PFC	13	LTX6PW	36	WD15AV2	47
DPX2500PFC	13	LTX8A	34	WX10A	45
ES01500LU10	51-53	LTX8AW	34	WX8A	45

• Tutte le specifiche possono essere variate senza alcuna notifica • Design and specifications subject to change without any notice

• E' vietata la riproduzione fotostatica e fotografica del presente catalogo, o di parti di esso, in mancanza di espressa autorizzazione da parte di Proel S.p.a.
• The photostatic and photographic reproduction of this catalogue, in whole or in part, is strictly prohibited without the prior written consent of Proel S.p.A



SSCAT24IE

www.soundssystemsproel.com

PROEL **SOUND SYSTEMS**

PROEL SPA

(Worldwide Headquarters)
Via alla Ruenia, 37/43
64027 Sant'Omero (TE) - ITALY
Tel. +39 0861 81241
Fax +39 0861 887862
P.I. 00778590679
N.Reg.AEE IT 08020000002762

UK

Proel International Ltd.
London

USA

Proel North America Inc.
Los Angeles

TUNISIE

Proel Tunisia Sarl
Tunisi

KOREA

Proel Korea Co. Ltd.
Gyunggi-Do

info@proel.com
www.soundsystems.proel.com

