



PROEL 
SOUND SYSTEMS



General Index

MIXER

- 04 **PLAYMIX** series
- 08 **MQX** series
- 12 **DIGIPAD8**

STAGE GEAR

- 16 **D** series

LOUDSPEAKERS

- 19 **V PRO** series
- 23 **V WAVE** series
- 24 **V FREE** series
- 26 **U24** series
- 28 **DIVA** series
- 34 **LTX** series
- 42 **S** series
- 46 **WX** series
- 48 **WD** series

PORTABLE SYSTEMS

- 60 **SESSION1X** series
- 52 **SESSION 700**
- 54 **FREEONEX**
- 56 **FREEPROX**



PLAYMIX **SERIES**

PLAYMIX is a series of mixers created by PROEL to offer in a very compact and stylish package a high inputs density, a full set of features and a superior audio quality, at a very convenient price point.

PLAYMIX mixers are available in **3 models**, with the same channel and master functions, but offering 6, 8 or 10 inputs respectively. The mono MIC/LINE channels feature low-noise, high-headroom microphone preamps, **3-band EQ with sweep MIDs and HPF**, and 60mm control faders, for a full control of your sound. All models feature an advanced DIGITAL section with **LCD display**, including:

- A high-quality **24-bit built-in DSP with 100 studio-grade presets** of single and combined effect (REVERBS, DELAYS, MODULATIONS)
- A **48KHz stereo USB audio interface** for playing/recording thru PC connection
- A built-in MP3 player from USB memory key or **BLUETOOTH interface**
- On-the-go stereo recording on USB memory key

Carefully designed and engineered in Italy by PROEL, PLAYMIX mixers are hosted in rugged cases, providing extended durability for a stage-proof use and they offer in an ultra-compact format the performance of professional consoles, delivering a clean and accurate sound for a wide range of applications.



PLAYMIX6

- 2 MIC/LINE IN with PAD
- 2 STEREO IN
- 24-bit built-in DSP with 99 presets of REVERBS, DELAYS, MODULATIONS
- 48KHz stereo USB audio interface
- Built-in MP3 player/recorder and BLUETOOTH interface
- 3-band EQ with sweep mid and LOW CUT
- 60mm fader
- FX/AUX send
- XLR MAIN MIX outputs
- 5V power supply USB bus



PLAYMIX8

- 4 MIC/LINE IN with PAD
- 2 STEREO IN
- 24-bit built-in DSP with 99 presets of REVERBS, DELAYS, MODULATIONS
- 48KHz stereo USB audio interface
- Built-in MP3 player/recorder and BLUETOOTH interface
- 3-band EQ with sweep mid and LOW CUT
- 60mm fader
- FX/AUX send
- XLR MAIN MIX outputs
- 5V power supply USB bus



BAGPLAYMIX6



Padded bag



High-headroom,
low-noise MIC
preamps



BAGPLAYMIX8



Padded bag



XLR MAIN MIX outputs
and independent C.ROOM



BAGPLAYMIX10



Padded bag



24bit **digital effect**
with 100 presets
and multimedia
PLAYER/RECORDER



PLAYMIX10

- 6 MIC/LINE IN with PAD
- 2 STEREO IN
- 24-bit built-in DSP with 99 presets of REVERBS, DELAYS, MODULATIONS
- 48KHz stereo USB audio interface
- Built-in MP3 player/recorder and BLUETOOTH interface
- 3-band EQ with sweep mid and LOW CUT
- 60mm fader
- FX/AUX send
- XLR MAIN MIX outputs
- 5V power supply USB bus

	PLAYMIX6	PLAYMIX8	PLAYMIX10
MONO INPUT CHANNEL			
Mic Input	sensitivity impedance	from -10 to -45 dB Balanced XLR-F 1 Kohm	
Line Input	sensitivity impedance	from +20 to -15 dB Balanced JACK 20 Kohm	
Lo cut		80Hz, 6dB/oct.	
EQ	HIGH (shelving) MID (peaking) LOW (shelving)	±15 dB @ 12K Hz ±12 dB @ 250-6K Hz ±15 dB @ 80 Hz	
STEREO INPUT CHANNEL			
Line Input	sensitivity impedance	from +12 to -15 dB Balanced JACK 20 Kohm Stereo Mini JACK	
MASTER SECTION			
MAIN MIX	nom. out level	+4 dBu Unbalanced XLR-M	
C. ROOM output	nom. out level	+4 dBu Unbalanced JACK	
SEND output	nom. out level	+4 dBu Unbalanced JACK	
HEADPHONES	min. impedance	64 ohm Stereo JACK	
Bluetooth		Version 5.0, Audio Streaming	
USB Audio Interface		Stereo IN/OUT, 16-bit converter 44.1 KHz (PENDRIVE) / 48 KHz (PC) sample rate Type A	
DIGITAL EFFECT PROCESSOR			
Effects		100 presets	
A/D and D/A converters		24 bit	
DSP resolution		24 bit	
Controls		2-DIGIT display, DIAL, LEVEL	
GENERAL SPECIFICATIONS			
Maximum level		all outputs +15 dBu	
Crosstalk		meas. at 1 KHz > 75 dB	
HUM & Noise		unweighted < 90 dB	
THD + Noise		at +4dB, 1kHz < 0,009 %	
Dimensions (WxHxD)	247 x 274 x 61 mm	331 x 274 x 61 mm	415x 274 x 61 mm
Weight	1,80 kg	2,50 kg	3,00 kg
POWER REQUIREMENTS			
Supply		use only supplied AC/DC ADAPTER 5VDC 1A	
Mains Supply Voltage		100-240 VAC (±10%) 50/60 Hz	
Consumption		15W	





MQX SERIES

The MQ Series from PROEL has been crafted to deliver high input density, professional-grade features, and exceptional audio quality in an ultra-compact, elegantly designed format — all at a remarkably competitive price. Engineered with Italian precision by the PROEL R&D team, MQ mixers represent the ideal choice for musicians, performers, and sound engineers seeking reliability, versatility, and premium performance in any sound reinforcement setup.

Taking the MQ concept to the next level, the new MQ X models introduce advanced digital processing and seamless connectivity.

A high-definition 24-bit DSP offers 99 studio-quality effects with adjustable parameters, easily managed through an intuitive LED display.

The integrated MP3 module allows flexible media playback via Bluetooth, USB KEY (USB-A), or PC connection (USB-C) — while the USB audio interface lets you record your mix directly to your computer with ease.

The MQ1222X provides 12 total inputs, including 6 high-quality mic preamps that ensure pristine, transparent sound. Each mono channel is equipped with one-knob intelligent compression for smooth, natural dynamics control. With 2 AUX sends, a stereo group bus, and 45 mm smooth-response faders, the MQ1222X delivers precise control and flexibility for a wide range of live sound and installation applications.

MQ1642X features 16 total inputs with 12 mic preamps, delivering superior input capacity and sonic clarity. Mono channels include sweepable mid EQs and one-knob intelligent compressors for advanced tonal shaping. With 4 AUX sends, 2 stereo group buses, and 60 mm professional faders, the MQ1642X provides full control, versatility, and a refined mixing experience tailored for complex live performances.

Housed in ultra-rugged enclosures, MQ X mixers are engineered for long-term durability and stage-ready reliability. For added convenience, optional padded carrying bags and 19" rack-mounting kits are available — making the MQ Series a perfect companion both on the road and in fixed installations.



MQ1222X

- Compact 12-input 4-bus mixer with effect, USB I/F and MP3 player
- 4 MONO MIC/LINE inputs, 2 STEREO MIC/LINE inputs and 2 STEREO LINE inputs
- 6 low-noise, very high-headroom microphone preamplifiers
- PHANTOM power
- 'One-knob' COMPRESSOR with LED indicator on MONO channels
- 3-band EQ with sweep mids and LO-CUT filter
- 1 AUX send pre-fader and 1 AUX send post-fader
- 24bit studio-grade digital effect with 99 presets with adjustable parameters, LCD color display and footswitch MUTE
- MP3 player thru USB flash memory and BLUETOOTH interface
- Built-in USB interface for PC recording and playback
- GROUPS 1&2 with MIX routing and output
- HEADPHONES and CONTROL ROOM outputs
- Electronically balanced MAIN MIX outputs with XLR-M and 1/4" JACK connectors
- Two 8-LED VU-METERS
- Universal switching built-in power supply
- Applications: small live bands (3 to 5 people), home and multimedia applications, rehearsal rooms, small fixed installations



OPTIONAL ACCESSORIES

BAGMQ1222X



Padded bag

RACKMQX12



Rack adapter



OPTIONAL ACCESSORIES

BAGMQ1642X



Padded bag

RACKMQX16



Rack adapter

MQ1642X

- Compact 16-input 4-bus mixer with effect, MP3 player and USB I/F
- 8 MONO MIC/LINE inputs and 4 STEREO MIC/LINE inputs
- 12 low-noise, very high-headroom microphone preamplifiers
- PHANTOM power
- 'One-knob' COMPRESSOR with LED indicator on MONO channels
- 3-band EQ with sweep mids and LO-CUT filter
- 3 AUX sends pre-fader e 1 AUX send post-fader
- 24bit studio-grade digital effect with 99 presets with adjustable parameters, LCD color display and footswitch MUTE
- MP3 player thru USB flash memory and BLUETOOTH interface
- Built-in USB interface with routing options for PC recording and playback
- GROUPS 1&2 with MIX routing and output
- 2-TRACK, HEADPHONES and CONTROL ROOM outputs
- Electronically balanced MAIN MIX outputs with XLR-M and ¼" JACK connectors
- Two 12-LED VU-METERS
- Universal switching built-in power supply
- Applications: full live bands, home and multimedia applications, rehearsal rooms, fixed installations



		MQ1222X	MQ1642X
MONO INPUT CHANNEL			
Mic Input	sensitivity	from -10 to -50 Db - Balanced XLR-F	from -10 to -50 Db - Balanced XLR-F
	impedance	3 Kohm	3 Kohm
Line Input	sensitivity	from +20 to -20 dB - Balanced JACK	from +20 to -20 dB - Balanced JACK
	impedance	30 Kohm	30 Kohm
Lo cut		75Hz, 18dB/oct.	75Hz, 18dB/oct.
EQ	HIGH (shelving)	±15 dB @ 12 KHz	±15 dB @ 12 KHz
	MID (peaking)	±15 dB @ 2.5 KHz	±15 dB from 100 Hz to 8 kHz
	LOW (shelving)	±15 dB @ 80 Hz	±15 dB @ 80 Hz
Compressor	Fet	CH 1-4, 1-knob	CH 1-8, 1-knob
STEREO INPUT CHANNEL			
Mic Input	sensitivity	from -10 to -50 dB - Balanced XLR-F	from -10 to -50 dB - Balanced XLR-F
	impedance	3 Kohm	3 Kohm
Line Input	sensitivity	from +20 to -20 dB - Balanced JACK	from +20 to -20 dB - Balanced JACK
	impedance	30 Kohm	30 Kohm
Line Input	sensitivity	-10 dBv - Balanced JACK	-10 dBv - Balanced JACK
	impedance	10 Kohm	10 Kohm
EQ	HIGH (shelving)	±15 dB @ 12 KHz	±15 dB @ 12 KHz
	MID (peaking)	±15 dB @ 2.5 KHz	±15 dB @ 2.5 KHz
	LOW (shelving)	±15 dB @ 80 Hz	±15 dB @ 80 Hz
MASTER SECTION			
MAIN MIX	nom. out level	+4 dBu - Balanced JACK and XLR-M	+4 dBu - Balanced JACK and XLR-M
C. ROOM output	nom. out level	0 dBu - Unbalanced JACK	0 dBu - Unbalanced JACK
GROUP output	nom. out level	+4 dBu - Balanced JACK	+4 dBu - Balanced JACK
FX/AUX output	nom. out level	0 dBu - Unbalanced JACK	0 dBu - Unbalanced JACK
HEADPHONES	min. impedance	32 ohm	32 ohm
	max. out level	(2x) 193 mW - Stereo JACK	(2x) 193 mW - Stereo JACK
DIGITAL MULTIEFFECT /PLAYER			
Effects		99 presets	99 presets
FX DSP resolution		24 bit	24 bit
Bluetooth		Version 5.0, Audio Streaming	Version 5.0, Audio Streaming
PC USB interface		USB 2.0 / 3.0 - Type C	USB 2.0 / 3.0 - Type C
USB player		USB 2.0 / 3.0 - Type C	USB 2.0 / 3.0 - Type C
A/D and D/A converters		24 bit 48KHz	24 bit 48KHz
Controls		LCD, DIAL, PEAK LED, MUTE switch, MUTE footswitch	LCD, DIAL, PEAK LED, MUTE switch, MUTE footswitch
GENERAL SPECIFICATIONS			
Maximum level	all outputs	+22 dBu	+22 dBu
Crosstalk	meas. at 1 KHz	> 82 dBu	> 82 dBu
HUM & Noise	unweighted	< -93 dBu	< -93 dBu
THD + Noise	at +4dB, 1kHz	< 0,008 %	< 0,008 %
Dimensions (WxHxD)		352 x 352 x 90 mm	481 x 432 x 104 mm
Weight		3,90 kg	6,30 kg
POWER REQUIREMENTS			
		110-240 VAC (±10%) 50 / 60 Hz	110-240 VAC (±10%) 50 / 60 Hz
		available with:	available with:
Mains Supply Voltage		- Europe mains cord (Shucko plug)	- Europe mains cord (Shucko plug)
		- US mains cord (NEMA 5-15P plug)	- US mains cord (NEMA 5-15P plug)
		- UK mains cord (BS1363 plug)	- UK mains cord (BS1363 plug)
Consumption		50W	50W



'One-knob' COMPRESSOR with LED indicator on MONO channels



24bit studio-grade digital effect with 99 presets with adjustable parameters and LCD color display



MP3 player thru USB flash memory and BLUETOOTH interface



Built-in USB interface for PC recording and playback



DIGIPAD8

Step into the future of mixing with **DIGIPAD8**, the compact digital console that redefines what's possible in its class. Designed by Proel to deliver **professional performance in a portable format**, DIGIPAD8 combines cutting-edge digital technology with effortless usability — the ideal companion for **musicians, sound engineers, and creators** who demand both power and flexibility.

Take full control of your sound with **7 motorized faders** that respond with speed and precision, giving you instant access to saved scenes and allowing seamless transitions even in the most challenging live situations. The large **touchscreen display** puts every parameter at your fingertips, offering an intuitive workflow that adapts to your style.

From microphones and instruments to playback devices, DIGIPAD 8 is ready for anything thanks to its combo **MIC/LINE and stereo inputs**. With **two independent AUX sends** and a **dedicated FX send with Studio grade Digital Reverb**, it adapts easily to any setup, whether on stage, in the studio, or in fixed installations.

For today's hybrid world of performance and streaming, the **48 kHz USB audio interface** ensures pristine recording and playback, while the **dedicated Bluetooth channel** lets you stream music wirelessly with a single touch.

Use DIGIPAD8 as a powerful **stand-alone console** or take **full control from your smartphone, tablet or PC** with the dedicated iOS, Android, MacOS and Windows app, thanks to the **built-in Wi-Fi interface**. Save and recall your favorite configurations in seconds, and enjoy a workflow that's as flexible as your creativity.

Compact yet powerful, DIGIPAD8 brings together **professional-grade features, intuitive control, and complete portability** in one sleek design. Whether you're performing live, recording in the studio, or running an installation, DIGIPAD8 gives you the freedom to mix with confidence — anytime, anywhere.





OPTIONAL ACCESSORIES

BAGDIGIPAD8



Padded bag



7 motorized faders for quick control and scene recall



Large touchscreen display for intuitive parameter management



DIGIPAD8

- Compact digital mixer
- 7 motorized faders for quick control and scene recall
- Large touchscreen display for intuitive parameter management
- 6 combo MIC/LINE inputs for microphones and instruments
- 2 STEREO LINE inputs
- 2 independent AUX sends for monitors or external systems
- 1 dedicated FX send with studio-quality digital REVERB
- Balanced MAIN outputs with XLR connector
- 48 kHz USB audio interface for digital recording and playback
- Dedicated Bluetooth channel for wireless audio streaming
- Full remote control via dedicated app for iOS, Android, macOS, and Windows
- Scene save and recall function for quick configurations
- Can be used as a stand-alone console or controlled from an external device
- Compact and portable design suitable for live performances, studios, and fixed installations

INPUT CHANNELS			
Mic/Line Input 1-2	sensitivity impedance	from 0 to -45 dB 10 kΩ	Balanced XLR-F / Balanced JACK
Mic/Line Input 3-4	sensitivity impedance	from 0 to -45 dB 10 kΩ	Balanced XLR-F
Hi-Z input 3-4	sensitivity impedance	from 0 to -35 dB 1 MΩ	Unbalanced JACK
Stereo Line Input 5-8	sensitivity impedance	from 0 to -35 dB 10 kΩ	Balanced JACK
EQ	4-band full parametric EQ with LOW-CUT and HI-CUT		
Compressor	Threshold/Ratio/Gain/Attack/Release		
Gate	Threshold/Attenuation/Hold/Attack/Release		
MASTER SECTION			
MAIN MIX	nom. out level	0 dBu	Balanced XLR-M
MAIN MIX EQ	4-band full parametric EQ with LOW-CUT and HI-CUT		
MAIN MIX Limiter	Threshold/Attack/Release		
AUX 1-2 output	nom. out level	0 dBu	Balanced JACK
AUX 1-2 EQ	4-band full parametric EQ with LOW-CUT and HI-CUT		
AUX 1-2 Limiter	Threshold/Attack/Release		
HEADPHONES	min. impedance max. out level	32 Ω 135 mW	2 x Stereo MINIJACK
REVERB	Reverb Size		
USB / BLUETOOTH INTERFACE			
Bluetooth	Version 5.2, Audio Streaming		
PC USB interface	USB 2.0 / 3.0		Type C
A/D and D/A converters	24 bit – 48 KHz		
USER INTERFACE			
Onboard controls	Seven 60mm motor-faders 3" Capacitive Touch Display Seven DIRECT SELECTION keys Eight direct access keys Rotary dial		
Remote control	Integrated Wi-Fi Interface Windows App MacOS Android App iOS App		
GENERAL SPECIFICATIONS			
Maximum level	all outputs	+18 dBu	
Crosstalk	meas. at 1 KHz	-105 dB	
HUM & Noise	unweighted	-85 dBu	A weighted -89 dBu
THD + Noise	at +4dB, 1kHz	> 0.002%	
Dimensions (WxHxD)	280 x 187 x 53.5 mm		
Weight	2.10 kg		
POWER REQUIREMENTS			
Supply	5V / 3A		USB Type C
Mains Supply Voltage	100-240 VAC (±10%) 50 / 60 Hz USB power adapter available with EU / US / UK plug		
Consumption	15 W		



48 kHz USB audio interface for digital recording and playback



Dedicated Bluetooth channel for wireless audio streaming



Full remote control via dedicated app for iOS, Android, macOS, and Windows





STAGE GEAR **SERIES**

DI Boxes perform several important functions: they are designed for impedance matching and balancing the signal of a guitar, a keyboard or any line-level output source, and for injecting directly the signal with very long connections to the XLR microphone inputs of a mixing console.

D10P

Passive direct box with transformer does not require any external power such as phantom power or batteries to work. The advantage of a transformer is the possibility to avoid any electrical connection between the sound source and the mixer. This provides two huge benefits: with no electrical path, ground loops are eliminated and the cancellation of common-mode noise, like hum, is possible.



D10A

Active direct box with transformer requires the phantom power to work. The advantage of a transformer is the possibility to avoid any electrical connection between the sound source and the mixer. This provides two huge benefits: with no electrical path, ground loops are eliminated and the cancellation of common-mode noise, like hum, is possible. The advantage of active instead of passive DIBOX is null insertion loss and less output hum and noise.



D20P

STEREO passive direct box with transformers does not require any external power such as phantom power or batteries to work. The advantage of a transformer is the possibility to avoid any electrical connection between the sound source and the mixer. This provides two huge benefits: with no electrical path, ground loops are eliminated and the cancellation of common-mode noise, like hum, is possible. D20P features two 1/4" jack to connect a stereo keyboard, or two RCA to connect a DJ console, or a 3,5mm mini-jack to connect a personal computer, for maximum flexibility without the need of special adapters.







V PRO SERIES

V PRO series is the ultimate evolution of the acclaimed V series of PROEL powered loudspeakers. The V PRO features now a totally new pre-amp section including an advanced processing with high-performance DSP engine, for a very smooth response and a high-definition sound. The possibility to select the 5 different EQ presets allows to adapt the system response to the different applications with a touch of your fingers. These ultra-portable speakers combine, in carefully engineered and light-weight cabinets, the clearest and most accurate PROEL sound with Class D Amplifier technology and Switch Mode Power Supply, offering an unbeatable PA solution at its price point. The four models, V8PRO, V10PRO, V12PRO and V15PRO, feature a new extremely efficient amplifier module capable of delivering 600 W of robust power to the transducers. Thanks to the use of SMPS technology, this power comes in an ultra-lightweight package, making the V PRO the most portable PROEL speakers ever.

The V PRO cabinets, expression of the most advanced Italian design, include a super-comfortable luggage-style top handle for an effortless portability. The slanted shape allows the speakers to be laid on their side and used also as stage monitors.

Thanks to the MIC/ LINE input and the WIRELESS USB input for the use of PROEL U24 microphone systems, the V PRO can be used in a variety of applications without external equipment.

V8PRO NEW

- Bi-amplified 2-way system
- 1" high-definition neodymium compression driver on a wide-dispersion 90° x 60° constant coverage horn
- 8" long-excursion woofer with 1.5" voice coil
- 600 W total peak power amplifier
- High-definition DSP 24-bit A/D and D/A converters
- SPL MAX 122 dB
- Frequency response 70 Hz - 20 kHz
- 7 kg TOTAL WEIGHT



Ultra-lightweight, high-efficiency Class D power amplifiers with SMPS

V10PRO NEW

- Bi-amplified 2-way system
- 1" high-definition neodymium compression driver on a wide-dispersion 90° x 60° constant coverage horn
- 10" long-excursion woofer with 2" voice coil
- 600 W total peak power amplifier
- High-definition DSP 24-bit A/D and D/A converters
- SPL MAX 123 dB
- Frequency response 60 Hz - 20 kHz
- 10 kg TOTAL WEIGHT



Symmetrical 45° wedge angle for stage monitoring



High-definition DSP with 5 EQ presets

	V8PRO	V10PRO
System type	2-way vented enclosure	2-way vented enclosure
High Frequency Device	1" neodymium compression driver	1" neodymium compression driver
Low Frequency Device	8" woofer with 1.5" VC	10" woofer with 2" VC
Angular Coverage	90° H x 60° V	90° H x 60° V
Total peak power	600 W	600 W
HF Amplifier Cont. Power	50 W Class AB	50 W Class AB
LF Amplifier Cont. Power	250 W Class D	250 W Class D
Power Supply type	SMPS	SMPS
Frequency Response	70 Hz - 20 kHz	60 Hz - 20 kHz
Processing	DSP	DSP
Preset	MUSIC, LIVE, DJ, MONITOR, SPEECH	MUSIC, LIVE, DJ, MONITOR, SPEECH
Max SPL at 1m (peak)	122 dBspl	123 dBspl
Crossover Frequency	2000 Hz	2000 Hz
Input Impedance	30 kohm balanced / 15 kohm unbalanced	30 kohm balanced / 15 kohm unbalanced
Input Sensitivity	LINE: +4 dBu / MIC: -30 dBu	LINE: +4 dBu / MIC: -30 dBu
Controls	MIC/LINE, DSP VOICING, LEVEL MIC/LINE: Combo XLR-F / JACK	MIC/LINE, DSP VOICING, LEVEL MIC/LINE: Combo XLR-F / JACK
Connectors	LINK: XLR-M WIRELESS MIC (U-24H or U-24B)	LINK: XLR-M WIRELESS MIC (U-24H or U-24B)
Power Supply	220-240 V~ or 100-120 V~ 50/60 Hz with voltage selector	220-240 V~ or 100-120 V~ 50/60 Hz with voltage selector
Rated Consumption*	300 W	300 W
Construction	Polypropylene	Polypropylene
Cabinet Colour	Black	Black
Flying System	4 x M8 top/bottom	4 x M10 top/bottom
Handles	1 x top	1 x top
Mounting Pole	1 x bottom	1 x bottom
Monitor taper	46°	45°
Weight	7.1 Kg (15.7 lb)	9.9 Kg (21.8 lb)
Dimensions (W x H x D)	280 x 422 x 263 mm	330 x 512 x 280 mm

* Rated consumption is measured with pink noise with a crest factor of 12 dB, this can be considered a standard music program.

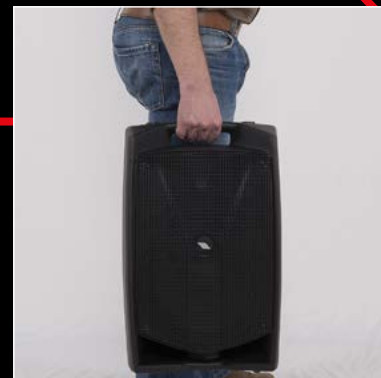
V12PRO NEW

- Bi-amplified 2-way system
- 1" high-definition neodymium compression driver on a wide-dispersion 90° x 60° constant coverage horn
- 12" long-excursion woofer with 2.5" voice coil
- 600 W total peak power amplifier
- High-definition DSP 24-bit A/D and D/A converters
- SPL MAX 124 dB
- Frequency response 50 Hz - 20 kHz
- 13 kg TOTAL WEIGHT



V15PRO NEW

- Bi-amplified 2-way system
- 1" high-definition neodymium compression driver on a wide-dispersion 90° x 60° constant coverage horn
- 15" long-excursion woofer with 2.5" voice coil
- 600 W total peak power amplifier
- High-definition DSP 24-bit A/D and D/A converters
- SPL MAX 126 dB
- Frequency response 45 Hz - 20 kHz
- 18 kg TOTAL WEIGHT



Ergonomic, ultra-comfortable top handle for an effortless transportation

OPTIONAL ACCESSORIES

COVER8
COVER10

COVER12
COVER15



Cover for V8PLUS -V10PLUS
V12PLUS - V15PLUS

KPTV8
KPTV10

KPTV12
KPTV15



Brackets for V8PLUS -V10PLUS
-V12PLUS - V15PLUS

	V12PRO	V15PRO
System type	2-way vented enclosure	2-way vented enclosure
High Frequency Device	1" neodymium compression driver	1" neodymium compression driver
Low Frequency Device	12" woofer with 2.5" VC	15" woofer with 2.5" VC
Angular Coverage	90° H x 60° V	90° H x 60° V
Total peak power	600 W	600 W
HF Amplifier Cont. Power	50 W Class AB	50 W Class AB
LF Amplifier Cont. Power	250 W Class D	250 W Class D
Power Supply type	SMPS	SMPS
Frequency Response	50 Hz - 20 kHz	45 Hz - 20 kHz
Processing	DSP	DSP
Preset	MUSIC, LIVE, DJ, MONITOR, SPEECH	MUSIC, LIVE, DJ, MONITOR, SPEECH
Max SPL at 1mt (peak)	124 dBspl	126 dBspl
Crossover Frequency	2000 Hz	2000 Hz
Input Impedance	30 kohm balanced / 15 kohm unbalanced	30 kohm balanced / 15 kohm unbalanced
Input Sensitivity	LINE: +4 dBu / MIC: -30 dBu	LINE: +4 dBu / MIC: -30 dBu
Controls	MIC/LINE, DSP VOICING, LEVEL	MIC/LINE, DSP VOICING, LEVEL
Connectors	MIC/LINE: Combo XLR-F / JACK LINK: XLR-M WIRELESS MIC (U-24H or U-24B)	MIC/LINE: Combo XLR-F / JACK LINK: XLR-M WIRELESS MIC (U-24H or U-24B)
Power Supply	220-240 V~ or 100-120 V~ 50/60 Hz with voltage selector	220-240 V~ or 100-120 V~ 50/60 Hz with voltage selector
Rated Consumption*	300 W	300 W
Construction	Polypropylene	Polypropylene
Cabinet Colour	Black	Black
Flying System	4 x M10 top/bottom	4 x M10 top/bottom
Handles	1 x top	1 x top, 2 x sides
Mounting Pole	1 x bottom	1 x bottom
Monitor taper	44°	44°
Weight	12.8 Kg (28.2 lb)	19 Kg (41.9 lb)
Dimensions (W x H x D)	380 x 600 x 328 mm	440 x 712 x 400 mm

* Rated consumption is measured with pink noise with a crest factor of 12 dB, this can be considered a standard music program.



V WAVE SERIES

With **V WAVE** PROEL has further expanded the potential of the acclaimed V SERIES by adding to the lightweight ultra-durable PP cabinets, to the **clear and accurate sound** and to the **powerful 600W amplifier** an **ultra-versatile 3-ch mixer section**.

V10WAVE and **V12WAVE** are active portable sound systems featuring multiple inputs and an advanced **MP3 player with BLUETOOTH connectivity**, able to play songs from an SD card, a USB MEMORY STICK and also from your smartphone or tablet thru a **BLUETOOTH connection**. V WAVE include also the **BT LINK** function that allows to connect your BLUETOOTH device to two speakers in STEREO mode, completely eliminating the need for cables.

The built-in 3-channel mixer, with independent level controls and a 2-band EQ, includes also **two USB inputs** for connecting PROEL **U24H** or **U24B 2.4GHz Wireless Microphones with USB receiver**. These hassle-free wireless systems, available both with handheld and bodypack transmitter, can be connected to the speakers just plugging in the ultra-compact USB receiver and offer a high-definition, interference-free transmission thanks to the 2.4GHz technology.

V WAVE loudspeakers can be used in a variety of applications, ranging from speech diffusion and music playback to live music and DJ sets. The extremely versatile cabinets can be mounted on standard speaker poles and the V12WAVE is even fitted with a luggage-style extra handle and two wheels.



V10WAVE

- Bi-amplified 2-way system
- 1" high-definition neodymium compression driver on a wide-dispersion 90° x 60° constant coverage horn
- 10" long-excursion woofer with 2" voice coil
- 600 W total peak power amplifier
- 3ch built-in mixer with MP3 player and BT
- Two USB inputs for 2.4GHz wireless microphones
- SPL MAX 123 dB
- Frequency response 60 Hz - 20 kHz
- 14.5 kg total weight



BT LINK function for connecting one bluetooth device in STEREO mode to two V WAVE speakers

V12WAVE

- Bi-amplified 2-way system
- 1" high-definition neodymium compression driver on a wide-dispersion 90° x 60° constant coverage horn
- 12" long-excursion woofer with 2.5" voice coil
- 600 W total peak power amplifier
- 3ch built-in mixer with MP3 player and BT
- Two USB inputs for 2.4GHz wireless microphones
- SPL MAX 124 dB
- Frequency response 50 Hz - 20 kHz
- 15.5 kg total weight



Two USB inputs for connecting 2.4GHz wireless microphones

V10WAVE

V12WAVE

	V10WAVE	V12WAVE
MIXER Section		
MONO inputs	2 x MIC/LINE IN (XLR-F + 1.4" JACK)	
STEREO input	1 x LINE IN (2xRCA + MINI-JACK)	
WIRELESS inputs	2 x USB TYPE-A	
Outputs	MONO LINE OUT (1.4" JACK)	
Main EQ	2-band EQ (HIGH + LOW)	
MULTIMEDIA Section		
Player Type	USB / SD / BLUETOOTH player with BT LINK	
Compatible File Formats	MP3	
Control Interface	LCD display, CONTROL buttons	
AMPLIFIER Section		
Total Peak Power	600W	
Continuous Power	300W	
Amplifier Type	Class D	
Power Supply	SMPS	
Processing	Analog	
LOUDSPEAKER Section		
System Type	2-way vented enclosure	
High Frequency Device	1" horn loaded neodymium compression driver	
Low Frequency Device	10" woofer with 2"VC	12" woofer with 2.5"VC
Angular Coverage	90° H x 60° V	
Frequency Response	60 Hz - 20 kHz	50 Hz - 20 kHz
Max SPL	123	124
GENERAL Specifications		
Construction	Polypropylene	
Cabinet Colour	Black	
Handles	1 x top	1 x top, 1 x top retractable
Wheels	-	2 rear
Mounting Pole	1 x bottom	
Dimensions (WxHxD)	330 x 514 x 286 mm	380 x 603 x 359 mm
Weight	14.5 kg (31.9 lb.)	15.5 kg (34.2 lb.)
Power Supply	230 V~ or 115 V~ 50/60 Hz with LINE VOLTAGE selector	
Rated Consumption	300W	

OPTIONAL ACCESSORIES

COVERV10FW



Cover for V10FREE and V10WAVE

COVERV12FW



Cover for V12FREE and V12WAVE

V FREE SERIES

PROEL V FREE systems gives you the freedom to perform your music or play your sound anywhere, with a **superb sound quality** and without the hassle of laying down cables or finding a power outlet.

V10FREE and **V12FREE** are **battery-powered** portable sound systems featuring a powerful **400W amplifier**, a built-in **3-channel mixer** with effect and tone controls and an advanced **MP3 player with BLUETOOTH connectivity**, featuring a large back-lit LCD display and able to play songs from SD card, USB MEMORY STICK or directly from your smartphone or tablet.

They includes also **two USB inputs** for connecting PROEL **U24H** or **U24B 2.4GHz Wireless Microphones with USB receiver**, available both with handheld and bodypack transmitter. Just plug in the ultra-compact USB receiver and you can instantly use a professional wireless system, offering a high-definition, interference-free transmission thanks to the 2.4GHz technology.

The premium loudspeakers, the Class D power amplifier and the sophisticated processing provide a superb sound quality, while the built-in Li-ion battery allows for up to **10 hours of mains-free continuous operation**, for the maximum freedom of use.

Both these **ultra-portable and light-weight** systems (10kg and 11kg respectively) can be installed on standard speaker poles and the V12FREE is fitted with a luggage-style extra handle and two wheels.

Incredibly simple to set-up and use, V FREE loudspeakers are perfect for a wide range of applications, including parties, schools, corporate and educational presentations, seminars, gym, weddings, live music and even DJ sets.



V10FREE

- Bi-amplified 2-way system
- 1" high-definition neodymium compression driver
- 10" long-excursion woofer with 1.5" voice coil
- 400 W total peak power amplifier
- Li-Ion battery for 10 hours continuous use
- 3ch built-in mixer with MP3 player and BT
- Two USB inputs for 2.4GHz wireless microphones
- SPL MAX 122 dB
- Frequency response 60 Hz - 20 kHz
- 10 kg total weight



Rechargeable Li-Ion battery for 10 hours continuous use

V12FREE

- Bi-amplified 2-way system
- 1" high-definition neodymium compression driver
- 12" long-excursion woofer with 2" voice coil
- 400 W total peak power amplifier
- Li-Ion battery for 10 hours continuous use
- 3ch built-in mixer with MP3 player and BT
- Two USB inputs for 2.4GHz wireless microphones
- SPL MAX 123 dB
- Frequency response 50 Hz - 20 kHz
- 11 kg total weight



MP3 player with large LCD and BLUETOOTH connection

OPTIONAL ACCESSORIES

COVERV10FW



Cover for V10FREE and V10WAVE

COVERV12FW



Cover for V12FREE and V12WAVE

	V10FREE	V12FREE
MIXER Section		
MONO inputs	2 x MIC/LINE IN (XLR-F + 1.4" JACK)	
STEREO input	1 x LINE IN (2xRCA + MINI-JACK)	
WIRELESS inputs	2 x USB TYPE-A	
Internal EFFECT	ECHO	
Outputs	MONO LINE OUT (1.4" JACK)	
Main EQ	2-band EQ (HIGH + LOW)	
MULTIMEDIA Section		
Player Type	USB / SD / BLUETOOTH player	
Compatible File Formats	MP3	
Control Interface	LCD display, CONTROL buttons	
AMPLIFIER Section		
Total Peak Power	400W	
Continuous Power	200W	
Amplifier Type	Class D	
Power Supply	SMPS	
Processing	Analog	
LOUDSPEAKER Section		
System Type	2-way vented enclosure	
High Frequency Device	1" horn loaded neodymium compression driver	
Low Frequency Device	10" woofer with 1.5" VC	12" woofer with 2" VC
Angular Coverage	90° H x 60° V	
Frequency Response	60 Hz - 20 kHz	50 Hz - 20 kHz
Max SPL	122	123
GENERAL Specifications		
Construction	Polypropylene	
Cabinet Colour	Black	
Handles	1 x top	1 x top, 1 x top retractable
Wheels	-	2 rear
Mounting Pole	1 x bottom	
Dimensions (WxHxD)	330 x 514 x 286 mm	380 x 603 x 359 mm
Weight	10 kg (22.1 lb.)	11 kg (24.3 lb.)
Recharge Battery	11.1 V / 8000 mAh Li-ion	
Battery Recharging Time	4-5 hours	
Battery Working Time	10-12 hours	
Power Supply	100V-240V ~ 50/60 Hz	
Rated Consumption	300 W	



U24 **SERIES**

The Ultimate USB Digital Wireless solution

The **U24 USB** Wireless Microphones are **professional wireless systems** offering a high-definition, interference-free transmission thanks to the **2.4GHz technology** and featuring an **ultra-compact USB receiver**.

The receiver is powered thru the USB interface and features a dual-mode audio interface for an auto-sensing connection **both to analog and digital devices**. It features a plug-and-play operation with no driver installation required and it can be connected to any **PC/MAC** for recording directly into your favorite DAW application. Using a proper USB type-A adapter it can be also connected to **IOS or Android devices** for digital stand alone applications. Finally, it can be plugged into any PROEL device featuring a USB WIRELESS input (such as **V FREE and V WAVE speakers**) for using a professional microphone system in a flash and without the hassle of cables.

The digital 2.4GHz wireless technology offers superior sound quality and maximum reliability, avoiding interferences from television stations and other broadcast devices. The transmitter is automatically paired to the receiver and the **intelligent frequency hopping** ensures a stable connection.

U24H includes a handheld microphone featuring a **high-quality dynamic capsule** for dedicated vocal applications.

U24H



U24B



- 2.4 GHz ISM license-free operating band with Intelligent Frequency Hopping
- Ultra-compact USB receiver with dual-mode audio interface
- Easy pairing and memorization of matched devices
- More than 25 meters (100 ft) operating range in open spaces
- Applications: video production, podcasting, video blogging, presentations, lectures and seminars

U24H – Receiver

Frequency Range	2.404 – 2.476 GHz
RF Sensitivity	-78 dB
Frequency Response	50 Hz – 15 KHz
Sampling	16 bit @ 38.5KHz
THD	<0.05% @ 1KHz
SN Ratio	>85 dB
Transmission Delay	18.3 mS
Output Connector	USB Type-A
Audio Output Level	4dBu (1000mV)
Current	<55mA
Operating Temperature	-10 °C ~ 50 °C
Dimensions (WxHxD)	94 x 26 x 9.5 mm

WM24M – Handheld Transmitter

Frequency Range	2.404 – 2.476 GHz
Transmitting Power	< 10 dBm
Transmission Distance	Up to 25m (open space)
Frequency Response	50 Hz – 15 KHz
Sampling	16 bit @ 38.5KHz
THD	<0.05% @ 1KHz
SN Ratio	>85 dB
Transmission Delay	18.3 mS
Power Supply Battery	2x1.5V AA alkaline type
Operating Time	Up to 20 hours
Dimensions (WxHxD)	H: 278 x Ø: 47 mm



Ultra-compact USB receiver featuring a dual-mode analog and digital connection.

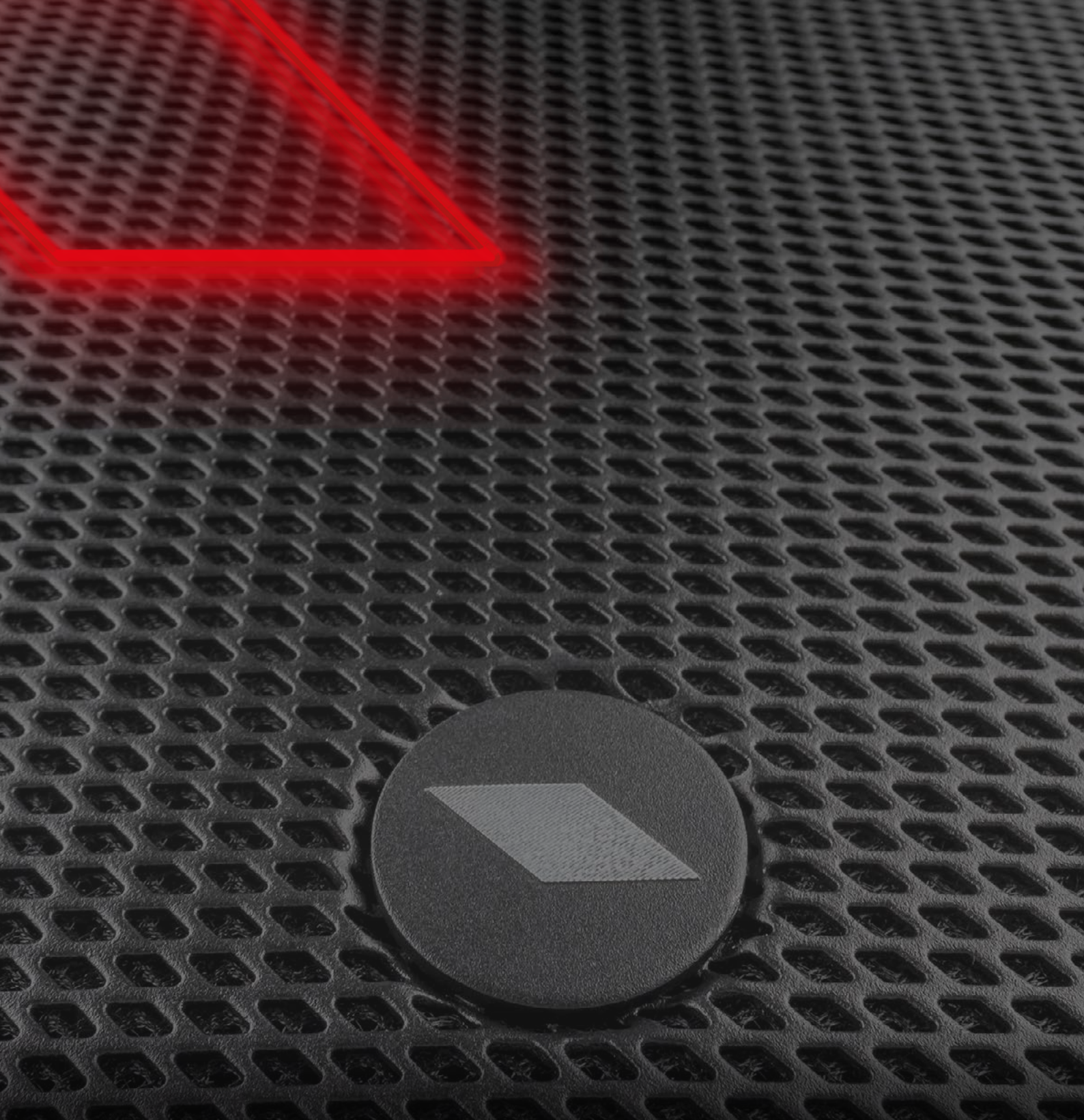
AN INCREDIBLE NUMBER OF APPLICATIONS FOR RECORDING, EDUCATION, JOURNALISM, GAMING, VOIP AND PODCASTING

The U24 directly connects to PC, Mac computers or portable devices for digital stand alone applications.



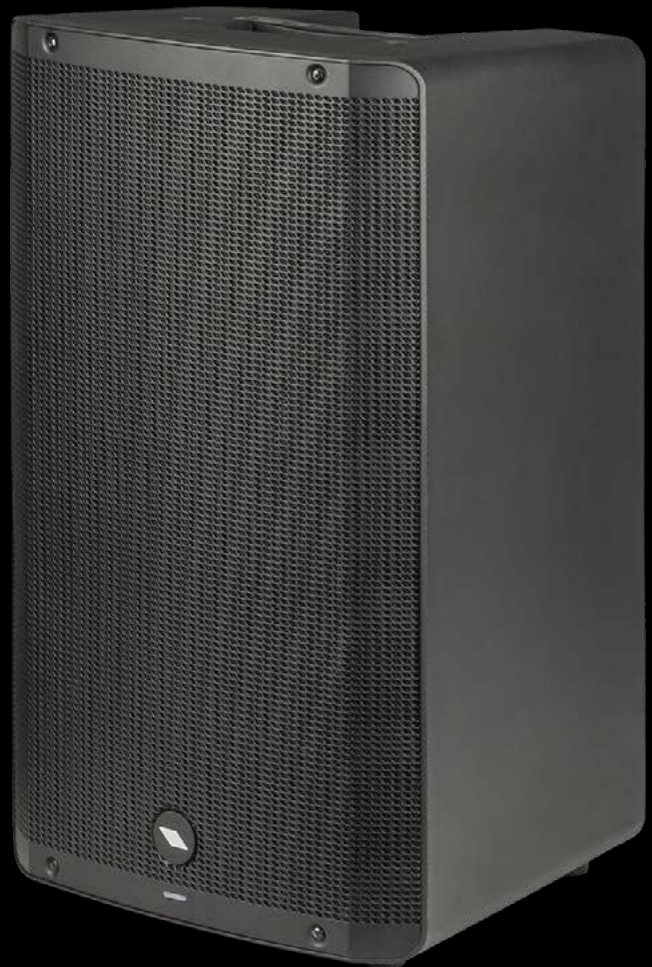
The U24 directly connects to PC, Mac computers or portable devices for digital stand alone applications.





DIVA SERIES

DIVA12A and **DIVA15A** are **digitally processed** active loudspeaker systems featuring multiple inputs and a versatile **BLUETOOTH** connectivity. Hosted in lightweight yet ultra-durable polypropylene cabinets with ergonomic handles, they combine selected transducers driven with a powerful **1000W CLASS-D amplifier** with SMPS, featuring high headroom and an accurate dynamic control for the maximum undistorted output power. The sophisticated pre-amp section includes an advanced processing with **high-performance DSP engine and linear phase FIR filters**, for a very smooth response and high-definition sound.



An intuitive user's interface with **LCD color display and single-knob control** is available for a quick selection and display of the **5 available EQ presets** (MUSIC, LIVE, DJ, MONITOR, SPEECH), allowing the speakers to be perfectly adapted to any kind of application.

Thanks to the built-in **3-channel mixer** with MIC/GUITAR/LINE input selection, HIGH and LOW EQ controls and **two WIRELESS USB inputs** for the use of PROEL U24 microphone systems, the DIVA12A and DIVA15A can be used in a variety of applications also without external equipment.

The **BLUETOOTH** interface allows to reproduce audio in mono streaming with a single speaker or in stereo streaming with two speakers and the **STEREO LINK (TWS) function**.





High-performance DSP engine and linear phase FIR filters.



3-channel mixer with MIC/GUITAR/LINE input selection HIGH and LOW EQ



Lightweight PP cabinets with wedge angle and dedicated MONITOR DSP preset



DIVA12A

- 2-way active processed loudspeaker system
- 1" high-definition compression driver with 1.35" VC and titanium diaphragm
- Wide-coverage 90° x 60° constant directivity horn
- 12" long-excursion woofer with 2" voice coil
- High-efficiency 1000 W peak Class D power amplifier with SMPS
- Built-in 3-channel mixer with MIC/LINE inputs and HIGH & LOW EQ controls
- High-definition DSP with 24-bit converters and FIR filters
- 5 DSP presets (MUSIC, LIVE, DJ, MONITOR, SPEECH)
- BLUETOOTH audio interface with STEREO LINK
- Color LCD display for the DSP editing
- SPL MAX: 127 dB
- Frequency response: 50 Hz - 20 kHz
- Lightweight, compact and ultra-durable PP cabinet
- 2 ergonomic handles for effortless transportation
- Slanted shape for the use as a stage monitor
- Four M10 flying points

DIVA12A	
System type	2-way vented enclosure
High Frequency Device	1" compression driver with 1.35" voice coil and titanium diaphragm
Low Frequency Device	12" woofer with 2" VC
Angular Coverage	90° H x 60° V
Total Peak Power	1000 W
HF Amplifier Continuous Power	100 W Class AB
LF Amplifier Continuous Power	400 W Class D
Power Supply	SMPS
System Processing	DSP
Frequency Response	50 Hz - 20 kHz
Max SPL	127 dB
Inputs	2 x MIC/LINE (COMBO), 1 X STEREO LINE (MINIJACK), 2 x USB WIRELESS
Outputs	1 x selectable MIX OUT / CH1 LINK (M-XLR)
Controls	CHANNEL LEVEL, INPUT SELECTOR, HIGH & LOW EQ, ROTARY PUSH ENCODER, COLOR LCD
Bluetooth	Version 5.0, Audio Streaming, STEREO LINK (TWS)
Power Supply	100-120 V ~ or 220-240 V ~ at 50/60 Hz with self-switch
Rated Consumption*	300 W
Floor Monitor Angle	45°
Flying System	4 x M10 - top/bottom
Cabinet Material	Polypropylene
Handles	1 x top, 1 x side
Mounting Pole	1 x bottom
Dimensions (W x H x D)	364 x 617 x 346 mm
Weight	16.0 kg (35.3 lb)

* Rated consumption is measured with pink noise with a crest factor of 12 dB, this can be considered a standard music program.

OPTIONAL ACCESSORIES

U24H



2.4GHz USB Wireless Handheld Microphone System

U24B



2.4GHz USB Wireless Backpack Microphone System

COVERDIVA12 COVERDIVA15



KPTFLDIVA12 KPTFLDIVA15



DIVA15A

- 2-way active processed loudspeaker system
- 1" high-definition compression driver with 1.35" VC and titanium diaphragm
- Wide-coverage 90° x 60° constant directivity horn
- 15" long-excursion woofer with 2.5" voice coil
- High-efficiency 1000 W peak Class D power amplifier with SMPS
- Built-in 3-channel mixer with MIC/LINE inputs and HIGH & LOW EQ controls
- High-definition DSP with 24-bit converters and FIR filters
- 5 DSP presets (MUSIC, LIVE, DJ, MONITOR, SPEECH)
- BLUETOOTH audio interface with STEREO LINK
- Color LCD display for the DSP editing
- SPL MAX: 129 dB
- Frequency response: 45 Hz - 20 kHz
- Lightweight, compact and ultra-durable PP cabinet
- 2 ergonomic handles for effortless transportation
- Slanted shape for the use as a stage monitor
- Four M10 flying points

DIVA15A

System type	2-way vented enclosure
High Frequency Device	1" compression driver with 1.35" voice coil and titanium diaphragm
Low Frequency Device	15" woofer with 2.5" VC
Angular Coverage	90° H x 60° V
Total Peak Power	1000 W
HF Amplifier Continuous Power	100 W Class AB
LF Amplifier Continuous Power	400 W Class D
Power Supply	SMPS
System Processing	DSP
Frequency Response	45 Hz - 20 kHz
Max SPL	129 dB
Inputs	2 x MIC/LINE (COMBO), 1 x STEREO LINE (MINIJACK), 2 x USB WIRELESS
Outputs	1 x selectable MIX OUT / CH1 LINK (M-XLR)
Controls	CHANNEL LEVEL, INPUT SELECTOR, HIGH & LOW EQ, ROTARY PUSH ENCODER, COLOR LCD
Bluetooth	Version 5.0, Audio Streaming, STEREO LINK (TWS)
Power Supply	100-120 V ~ or 220-240 V ~ at 50/60 Hz with self-switch
Rated Consumption*	300 W
Floor Monitor Angle	45°
Flying System	4 x M10 - top/bottom
Cabinet Material	Polypropylene
Handles	1 x top, 1 x side
Mounting Pole	1 x bottom
Dimensions (W x H x D)	421 x 696 x 382 mm
Weight	19.0 kg (41.8 lb)

* Rated consumption is measured with pink noise with a crest factor of 12 dB, this can be considered a standard music program.



Two ergonomic handles



Powerfull DSP Engine with delay adjustment



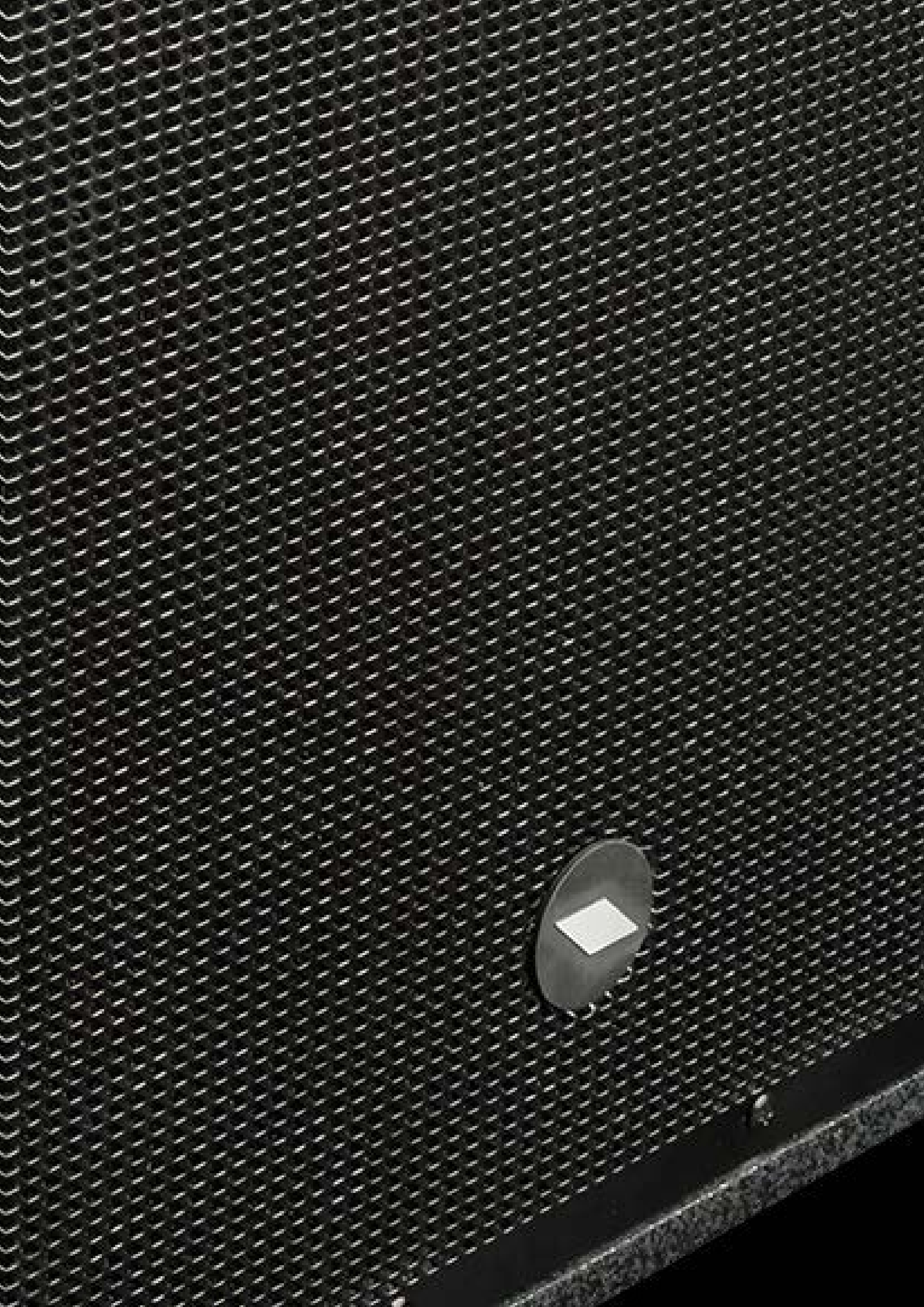
Four professional wheels for easy transportation



DIVASUB18A NEW

- Compact active subwoofer
- High efficiency custom 18" woofer with 3" VC
- 1500W peak power
- STEREO input and output
- High-definition DSP with 24-bit converters
- 2 presets (FLAT/BOOST) and 2 modes of use (NORMAL/CARDIOD)
- DELAY selection up to 10mt
- LCD display for DSP editing
- MAXIMUM SPL 132dB
- Frequency response 35 Hz – 160 Hz

DIVASUB18A	
System type	Vented enclosure subwoofer
Loudspeaker	18" woofer with 3" VC
Amplifier Continuous Power	750 W
Amplifier Peak Power	1500 W
Frequency Response	35 Hz - 160 Hz
Max SPL	132 dB
Connectors	IN: 2 x NEUTRIK COMBO OUT: 2 x NEUTRIK XLR-M
Controls	LCD DIAL
Power Supply	230 VAC or 115 VAC 50/60 Hz
Weight	38 kg (83.77 lb)
Cabinet	15/18 mm plywood Black anti-scratch paint 1.5 mm metal grille 2 handles 1 x pole socket 4 x 75 mm wheels
Dimensions (W x H x D)	510x650x650 (without wheels) mm 510x650x752 (with wheels) mm



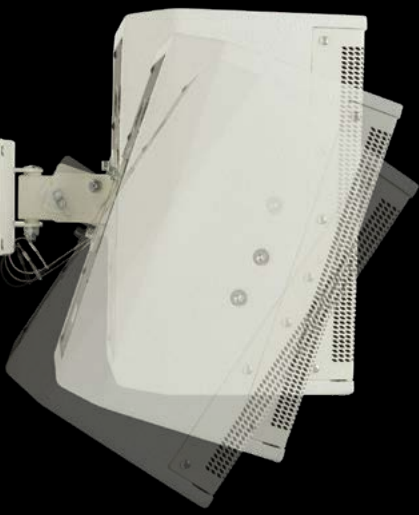


LTX SERIES

LTX is a complete series of active and passive speakers designed specifically for a wide range of commercial and residential installations. The speaker systems are hosted in rugged plywood enclosures available in black or white and offering a refined and unobtrusive aesthetics, capable of fitting into any environment. All the cabinets feature multiple suspension points and dedicated accessories for a wide choice of mounting options. For the high frequency reproduction we have designed symmetrical 90x90° dispersion horns, able to provide constant coverage for large audiences in both vertical and horizontal installations, and detailed response with low distortion. The high-excursion woofers, together with carefully tuned vented cabinets, offer an extended response with deep and tight basses.

The active versions are powered by amplifiers featuring the latest technologies for amplification, such as Switch Mode Power Supply and CLASS D output stages, and providing a massive amount of power with reduced size and weight. They include a sophisticated pre-amp section with up to 24 dB/oct. phase aligned crossover filters and active EQ filters for the system's fine tuning, together with POWERCON mains connectors. The HF and LF independent LIMITER circuits ensure an undistorted sound even at the loudest level and a total loudspeaker protection.





LTX6AV2 LTX6AWV2

- 1" neodymium tweeter
- 6.5" woofer
- 90° H x 90° V coverage
- 320 W peak power amplifier
- Frequency response 75 Hz - 20 kHz
- SPL max peak 110 dB



LTX8AV2 LTX8AWV2

- 1" compression driver
- 8" woofer
- 90° H x 90° V coverage
- 320W peak power amplifier
- Frequency response 70 Hz - 20 kHz
- SPL max peak 121 dB





LTX10AV2 LTX10AWV2

- 1" compression driver
- 10" woofer
- 90° H x 90° V coverage
- 600 W peak power amplifier
- Frequency response 60 Hz - 20 kHz
- SPL max peak 123 dB



LTX12AV2 LTX12AWV2

- 1" compression driver
- 12" woofer
- 90° H x 90° V coverage
- 600 W peak power amplifier
- Frequency response 50 Hz - 20 kHz
- SPL max peak 124 dB



OPTIONAL ACCESSORIES



KPTLTP



KPTLTPW



KPTLT10
KPTLT12



KPTLT10W
KPTLT12W



LTX6PV2 LTX6PWV2

- 1" neodymium tweeter
- 6.5" woofer
- 90° H x 90° V coverage
- 160 W peak power handling
- Frequency response 75 Hz - 20 kHz
- SPL 1w/1m 88 dB



LTX8PV2 LTX8PWV2

- 1" compression driver
- 8" woofer
- 90° H x 90° V coverage
- 160 W peak power handling
- Frequency response 70 Hz - 20 kHz
- SPL 1w/1m 92 dB





LTX10PV2 LTX10PW2

- 1" compression driver
- 10" woofer
- 90° H x 90° V coverage
- 500W peak power handling
- Frequency response 60 Hz - 20 kHz
- SPL 1w/1m 94 dB



LTX12PV2 LTX12PW2

- 1" compression driver
- 12" woofer
- 90° H x 90° V coverage
- 500W peak power handling
- Frequency response 50 Hz - 20 kHz
- SPL 1w/1m 96dB



OPTIONAL ACCESSORIES



KPTLTP



KPTLTPW



KPTLT10
KPTLT12



KPTLT10W
KPTLT12W



GENERAL SPECIFICATIONS

	LTX6V2	LTX8V2	LTX10V2	LTX12V2
System type	2-way vented enclosure	2-way vented enclosure	2-way vented enclosure	2-way vented enclosure
High Frequency Device	1" neodymium tweeter	1" compression driver with 1"VC	1" compression driver with 1"VC	1" compression driver with 1"VC
Low Frequency Device	6.5" woofer with 1"VC	8" woofer with 1.5"VC	10" woofer with 2" voice coil	12" woofer with 2.5" voice coil
Angular Coverage	90° H x 90° V	90° H x 90° V	90° H x 90° V	90° H x 90° V
Flying System	4 x M8, 3 x M6	3 x M8, 3 x M6	4 x M8, 3 x M6	4 x M8, 3 x M6
Construction	Plywood	Plywood	Plywood	Plywood
Handles	-	1 x rear	1 x rear	1 x rear
Mounting Polee	-	1 x bottom	1 x bottom	1 x bottom
Mounting Bracket	Tilt and Swivel bracket (included) C-shape bracket (optional)	Tilt and Swivel bracket (included) C-shape bracket (optional)	Tilt and Swivel bracket (optional) C-shape bracket (optional)	Tilt and Swivel bracket (optional) C-shape bracket (optional)
Dimensions (W x H x D)	205 x 318 x 200 mm	227 x 442 x 220 mm	295 x 515 x 280 mm	345 x 595 x 300 mm

ACTIVE VERSIONS

	LTX6AV2 - LTX6AWV2	LTX8AV2 - LTX8AWV2	LTX10AV2 - LTX10AWV2	LTX12AV2 - LTX12AWV2
Total peak power	320 W	320 W	600 W	600 W
HF Amplifier Continuous Power	80 W Class D	80 W Class D	50 W Class AB	50 W Class AB
LF Amplifier Continuous Power	80 W Class D	80 W Class D	250 W Class D	250 W Class D
Power Supply	SMPS	SMPS	SMPS	SMPS
Processing	Analog	Analog	Analog	Analog
Frequency Response	75 Hz – 20 kHz	70 Hz – 20 kHz	60 Hz – 20 kHz	50 Hz – 20 kHz
Max SPL	110 dB	121 dB	123 dB	124 dB
Connectors	IN: COMBO, LINK: XLR M	IN: COMBO, LINK: XLR M	IN: COMBO, LINK: XLR M	IN: COMBO, LINK: XLR M
Controls	LEVEL	LEVEL	LEVEL	LEVEL
Power Supply	100 – 240 VAC 50/60 Hz	100 – 240 VAC 50/60 Hz	230 or 115 VAC 50/60 Hz	230 or 115 VAC 50/60 Hz
Weight	4.5 kg / 9.9 lbs	7.0 kg / 15.4 lbs	12.0 kg / 26.5 lbs	15.0 kg / 33.1 lbs

PASSIVE VERSIONS

	LTX6PV2 - LTX6PWW2	LTX8PV2 - LTX8PWW2	LTX10PV2 - LTX10PWW2	LTX12PV2 - LTX12PWW2
Power Rating Continuous	80 W	160 W	250 W	250 W
Power Rating Peak	160 W	320 W	500 W	500 W
Impedance	8 ohm	8 ohm	8 ohm	8 ohm
Frequency Response	75 Hz – 20 kHz	70 Hz – 20 kHz	60 Hz – 20 kHz	50 Hz – 20 kHz
SPL (1w / 1m)	88 dB	92 dB	94 dB	96 dB
Connectors	2 x SPEAKON	2 x SPEAKON	2 x SPEAKON	2 x SPEAKON
Weight	4.45 kg / 9.8 lbs	6.95 kg / 15.3 lbs	11.7 kg / 25.8 lbs	14.8kg / 32.6 lbs

LTXSUB10A

- Subwoofer in BANDPASS configuration
- 10" high-excursion woofer with 2" voice coil
- 500 W peak Class D amplifier with SMPS
- High-definition DSP with 24-bit A/D and D/A converters
- STEREO connections
- FULL-RANGE or XOVER outputs
- PHASE control
- MAX SPL: 119dB
- Frequency response: 40 Hz - 150 Hz
- MDF cabinet
- Steel brackets for wall or ceiling installation



LTXSUB10P

- Subwoofer in BANDPASS configuration
- 10" high-excursion woofer with 2" voice coil
- 150W power handling
- SPL 1w/1m: 95dB
- Frequency response: 45 Hz - 150 Hz
- MDF cabinet
- Steel brackets for wall or ceiling installation



Steel brackets for wall or ceiling installation



	LTXSUB10A	LTXSUB10P
System type	Band-pass enclosure	Band-pass enclosure
Low Frequency Device	10" woofer with 2" voice coil	10" woofer with 2" voice coil
Total peak power	500 W	
Amplifier Continuous Power	250 W Class D	
Power Supply	SMPS	
Processing	Analog	
Power Rating Continuous		150 W
Power Rating Peak		300 W
Impedance		8 ohm
Frequency Response	45 – 150 Hz	45 – 150 Hz
Max SPL	119 dB	
SPL (1w / 1m)		95 dB
Connectors	IN: 2 x COMBO, OUT: 2 x XLR M	Terminal blocks
Controls	LEVEL, OUTPUT, PHASE	
Mounting System	2 x wall/ceiling mounting brackets	2 x wall/ceiling mounting brackets
Construction	MDF	MDF
Cabinet Colour	Black	Black
Power Supply	230 or 115 VAC 50/60 Hz with LINE VOLTAGE selector	
Dimensions (W x H x D)	480 x 570 x 253 mm	480 x 570 x 253 mm
Weight	21.5 kg / 47.4 lbs	20.0 kg / 44.1 lbs



S SERIES

PROEL introduces the **S Series**, a new range of compact and powerful sub-woofers designed to complement PROEL full-range passive or active speakers. The **variety of size, power and SPL** offered by the four S models provides, at an unbeatable price point, the perfect low extension solution for any speaker model available in the PROEL range.

All the S models feature high-excursion woofers in a **Hybrid Band Pass configuration (HBP)**. This innovative design provides a higher efficiency compared to direct radiation sub-woofers and, in addition, guarantees a much better coupling of the tuning ducts with the external air, reducing the distortion and the air turbulence, for a **more defined sound and deep and punchy lows**.

The new **CLASS D** amplifier modules with SMPS (Switch Mode Power Supply) can generate a massive amount of continuous power in a compact, lightweight and reliable package. All the modules include a **STEREO pre-amp section**, 24dB/oct. crossover filters with selectable frequency and PHASE reverse switch.

The cabinets are built with 15/18mm plywood and finished with **extra-durable polyurethane paint**. They feature two flush handles and four sturdy 75mm wheels for an easy transport (S15 and S18 only).



S18A

- Compact active HBP sub-woofer
- 18" woofer with 3"VC for a deep and extended response
- 1200W peak power
- STEREO input, link and output
- SPL MAX 131 dB
- Frequency response 36 Hz - 140 Hz
- Passive version available (S18P)



S15A

- Compact active HBP sub-woofer
- 15" woofer with 2.5"VC for a deep and extended response
- 1200 W peak power
- STEREO input, link and output
- SPL MAX 129 dB
- Frequency response 40 Hz - 160 Hz
- Passive version available (S15P)



Lightweight and rugged plywood cabinets with extra-durable polyurethane paint



STEREO preamp section with selectable frequency 24dB/oct. crossover filters



High-excursion woofers in Hybrid Band Pass (HBP) configuration



High-efficiency, lightweight and reliable CLASS D amplifier modules with SMPS



S12A

- Compact active HBP sub-woofer
- 12" woofer with 2.5"VC for a deep and extended response
- 1200 W peak power
- STEREO input, link and output
- SPL MAX 128 dB
- Frequency response 43 Hz - 160 Hz



Compact cabinet profile that fits perfectly on any stage and in any fixed installation



S10A

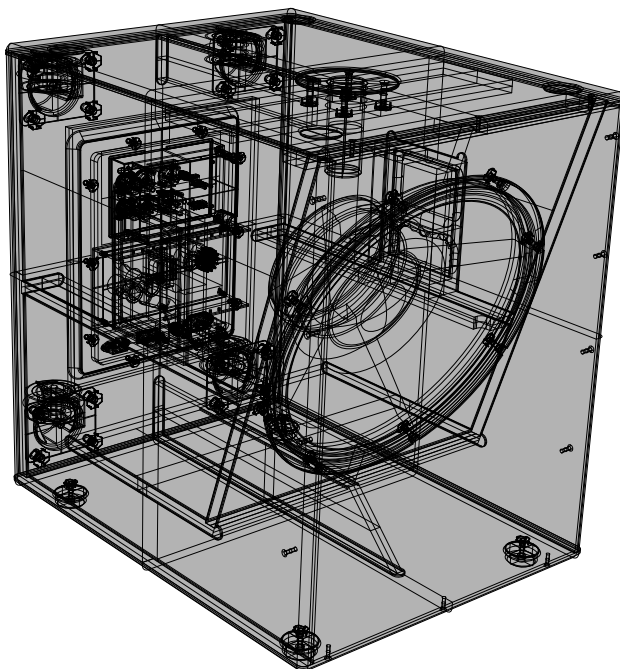
- Compact active HBP sub-woofer
- 10" woofer with 2"VC for a deep and extended response
- 700 W peak power
- STEREO input, link and output
- SPL MAX 119 dB
- Frequency response 46 Hz - 160 Hz
- Passive version available (S10P)

ACTIVE	S10A	S12A	S15A	S18A
System type	Hybrid Band Pass subwoofer	Hybrid Band Pass subwoofer	Hybrid Band Pass subwoofer	Hybrid Band Pass subwoofer
Loudspeaker	10" woofer with 2" VC	12" woofer with 2.5" VC	15" woofer with 2.5" VC	18" woofer with 3" VC
Amplifier Continuous Power	350 W	600 W	600 W	600 W
Frequency Response	46 Hz - 160 Hz	43 Hz - 160 Hz	40 Hz - 160 Hz	36 Hz - 140 Hz
Max SPL	119 dB	127dB	129dB	131 dB
Connectors	IN: 2 x NEUTRIK COMBO OUT: 2 x NEUTRIK XLR-M LINK: 2 x NEUTRIK XLR-MIN: 2 x NEUTRIK COMBO OUT: 2 x NEUTRIK XLR-M LINK: 2 x NEUTRIK XLR-M	IN: 2 x NEUTRIK COMBO OUT: 2 x NEUTRIK XLR-M LINK: 2 x NEUTRIK XLR-MIN: 2 x NEUTRIK COMBO OUT: 2 x NEUTRIK XLR-M LINK: 2 x NEUTRIK XLR-M	IN: 2 x NEUTRIK COMBO OUT: 2 x NEUTRIK XLR-M LINK: 2 x NEUTRIK XLR-MIN: 2 x NEUTRIK COMBO OUT: 2 x NEUTRIK XLR-M LINK: 2 x NEUTRIK XLR-M	IN: 2 x NEUTRIK COMBO OUT: 2 x NEUTRIK XLR-M LINK: 2 x NEUTRIK XLR-MIN: 2 x NEUTRIK COMBO OUT: 2 x NEUTRIK XLR-M LINK: 2 x NEUTRIK XLR-M
Controls	Volume, GND lift X-over Frequency, Phase	Volume, GND lift X-over Frequency, Phase	Volume, GND lift X-over Frequency, Phase	Volume, GND lift X-over Frequency, Phase
Power Supply	230 VAC or 120 VAC 50/60 Hz	230 VAC or 120 VAC 50/60 Hz	230 VAC or 120 VAC 50/60 Hz	230 VAC or 120 VAC 50/60 Hz
Weight	14 kg (30.8lb)	19 kg (41.9 lb)	26 kg (57.3 lb)	34.5 kg (76 lb)

PASSIVE	S10P	S15P	S18P
Nominal Impedance	8 Ω	8 Ω	8 Ω
Power Continuous (AES)	200 W	400 W	500 W
Power Program	400 W	800 W	1000 W
Power Peak	800 W	1600 W	2000 W
Frequency Response	46 Hz - 160 Hz	40 Hz - 160 Hz	36 Hz - 160 Hz
Sensitivity	95 dB @ 1 W/1 m	97 dB @ 1 W/1 m	98 dB @ 1 W/1 m
Connectors	2 x NEUTRIK SPEAKON (IN/LINK)	2 x NEUTRIK SPEAKON (IN/LINK)	2 x NEUTRIK SPEAKON (IN/LINK)
Weight	12.5 kg (27.5 lb)	24.5 kg (54 lb)	33 kg (72.7 lb)

GENERAL SPECIFICATIONS

Cabinet	15/18 mm plywood Black anti-scratch paint 1.5 mm metal grille 2 handles 1 x pole socket	15/18 mm plywood Black anti-scratch paint 1.5 mm metal grille 2 handles 1 x pole socket	15/18 mm plywood Black anti-scratch paint 1.5 mm metal grille 2 handles 1 x pole socket 4 x 75 mm wheels	15/18 mm plywood Black anti-scratch paint 1.5 mm metal grille 2 handles 1 x pole socket 4 x 75 mm wheels
Dimensions (W x H x D)	315x420x495 mm	360x500x520 mm	435x570x560 mm	508x630x645 mm



OPTIONAL ACCESSORIES



COVERS10



COVERS12



COVERS15



COVERS18



WX SERIES

WX series stage monitors, with a perfect sound intelligibility, a high SPL and an ultra-compact format, can offer a **professional yet affordable monitoring solution able to fit into stages of any size.**

The transducers' **coaxial** design not only provides an optimal HF and LF alignment and a controlled directivity for a perfect listening from any position, but it also helps to minimize the size of the monitor. The **ultra-compact enclosures**, with integrated handle and pole socket, have been designed to feature a very low profile and, therefore, a minimal footprint on stage. The cabinets are finished with **extra-strong polyurethane painting**, making them resistant to any abuse.

The lightweight **500W CLASS D amplifier module** with SMPS provides a high output that results in an unexpected SPL for such small loudspeakers. The sophisticated analogue processing provides a detailed response, particularly in the vocal range, and a remarkable resistance to feedback. **Two EQ PRESETS** are available for the use of the speaker not only for stage monitoring (MONITOR), but also as a MAIN SOUND SYSTEM (FOH) if necessary.

The WX monitors are available in **two models**, offering the right solution for different monitoring situations. The ultracompact **WX8A** can provide a high-quality monitoring also in very small spaces and it can give its best with speech, vocals and acoustic instruments. **WX10A**, with a higher SPL and a full-range response, is ideal for vocals, guitar, horns and electronic instruments or as a monitor for DJs.



WX8A

- Active 2-way coaxial stage monitor
- 1" compression driver with 1"VC
- 8" woofer with 2"VC
- 500 W total peak power
- SPL MAX: 122dB
- Frequency response: 80 Hz - 20 kHz



Coaxial speakers for a superior sound definition and an even directivity

WX10A

- Active 2-way coaxial stage monitor
- 1" compression driver with 1"VC
- 10" woofer with 2"VC
- 500 W total peak power
- SPL MAX: 123dB
- Frequency response: 70 Hz - 20 kHz

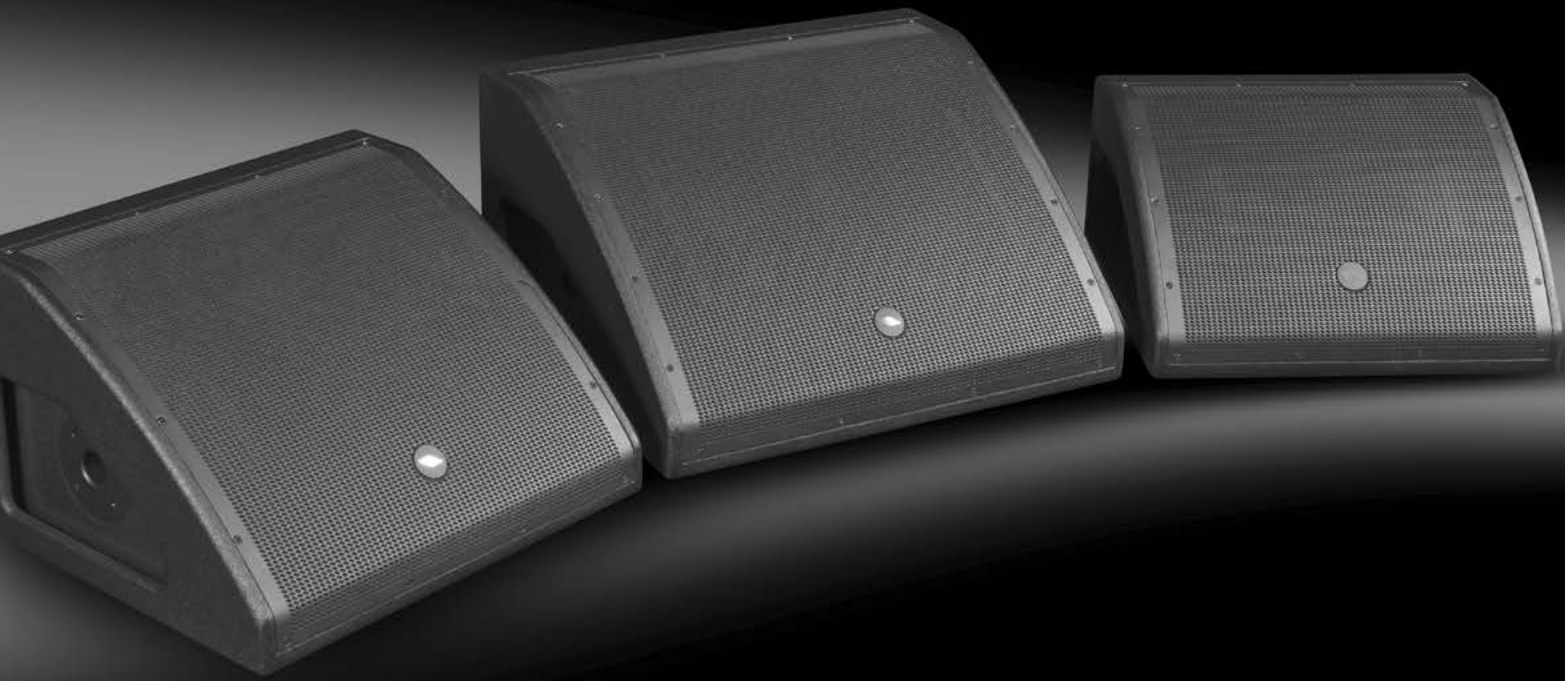


500W CLASS D power amplifiers with MONITOR and FOH EQ presets

	WX8A	WX10A
System type	2-way coaxial vented enclosure	2-way coaxial vented enclosure
High Frequency Device	1" compression driver with 1"VC	1" compression driver with 1"VC
Low Frequency Device	8" woofer with 2"VC	10" woofer with 2"VC
Angular Coverage	80° H x 80° V	80° H x 80° V
Total Peak Power	500 W	500 W
Amplifier Continuous Power	250 W Class D	250 W Class D
Power Supply	SMPS	SMPS
Processing	Analog	Analog
Frequency Response	80 Hz - 20 kHz	70 Hz - 20 kHz
Max SPL	122 dB	123 dB
Connectors	IN: Combo LINK: XLR M	IN: Combo LINK: XLR M
Controls	LEVEL, PRESET selector (MONITOR, FOH), GND lift	LEVEL, PRESET selector (MONITOR, FOH), GND lift
Power Supply	100-240 VAC 50/60 Hz	100-240 VAC 50/60 Hz
Stage Monitor Angle	36°	36°
Cabinet	MDF with black anti-scratch polyurethane paint	MDF with black anti-scratch polyurethane paint
Pole Socket	1 x side	1 x side
Handles	1 x side	1 x side
Dimensions (W x H x D)	325x336x233 mm	390x396x270 mm
Weight	8 kg (17.6 lb)	10 kg (22 lb)



Ultra-strong polyurethanic finishing for maximum strength and durability



WD SERIES V2

In the past few years with the **WEDGE Series** PROEL has set a standard for **affordable and road-proof stage monitors**, able to offer a highly valuable monitoring solution, with **perfect sound intelligibility and high SPL** in low-profile and portable enclosures. The **Version 2** of this very successful series represents a major step forward, with several design's refinements and feature's improvements.

The lightweight **CLASS D amplifier modules with SMPS** have been completely **re-designed**, to provide the utmost reliability even when the system is stressed at the highest sound pressure levels. Coupled to a **sophisticated analog processing**, they provide an extremely detailed response, particularly in the vocal range, and a remarkable resistance to feedback. Two tailored EQ PRESETS are available for the use of the speaker not only for stage monitoring (**MONITOR**), but also as a MAIN SOUND SYSTEM (**FOH**).

The stylish design of the cabinets, with integrated handles, recessed connection panel and pole socket, has been optimized **reducing further the profile** and, therefore, the footprint on the stage. Knowing very well the mistreatments the stage monitors are usually subjected to, we have greatly improved the strength of the cabinets' **polyurethane painting**, making them resistant to any abuse.

Also the **custom designed coaxial transducers**, able to provide a perfect HF and LF alignment and a controlled directivity for a perfect listening from any position, have been updated, especially the 10" that features now a compression driver with increased efficiency.

The V2 WEDGE monitors are available in three models, offering the perfect solution for any monitoring situations. The ultra-compact **WD10AV2** is able to offer a high-performance monitoring also on small stages and it's the ideal solution for speech, vocals and keyboards. **WD12AV2**, with its high SPL and its full-range response, is the favorite choice for vocals, guitar, horns and electronic instruments or as a high-power monitor for DJs. **WD15AV2**, with its full extension and powerful and deep response at the low frequencies, is the ideal monitor for bass and drums players. The horn-loaded HF section and the powerful amplifier make it the perfect solution for monitoring also on very large stages.



WD10AV2

- Active 2-way coaxial stage monitor
- 1" compression driver with 1"VC
- 10" woofer with 2"VC
- 500 W total peak power
- SPL MAX: 123dB
- Frequency response: 60 Hz - 20 kHz



Coaxial speakers for a superior sound definition and an even directivity

WD12AV2

- Active 2-way coaxial stage monitor
- 1" compression driver with 1.35"VC
- 12" woofer with 2.5"VC
- 700 W total peak power
- SPL MAX: 124dB
- Frequency response: 50 Hz - 20 kHz



New-design CLASS D power amplifiers for improved performance and reliability

WD15AV2

- Active 2-way coaxial stage monitor
- 1" compression driver with 1.35" VC on a waveguide
- 15" woofer with 3"VC
- 900 W total peak power
- SPL MAX: 126dB
- Frequency response: 45 Hz - 20 kHz



New ultra-strong polyurethane finishing for maximum strength and durability

	WD10AV2	WD12AV2	WD15AV2
System type	2-way coaxial vented enclosure	2-way coaxial vented enclosure	2-way coaxial vented enclosure
High Frequency Device	1" compression driver with 1"VC	1" compression driver with 1"VC	1" compression driver with 1.35"VC
Low Frequency Device	10" woofer with 2"VC	12" woofer with 2.5"VC	15" woofer with 3"VC
Angular Coverage	80° H x 80° V	80° H x 80° V	60° H x 60° V
Total Peak Power	500 W	700 W	900 W
HF Amplifier Continuous Power	50 W Class AB	50 W Class AB	50 W Class AB
LF Amplifier Continuous Power	200 W Class D	300 W Class D	400 W Class D
Power Supply	SMPS	SMPS	SMPS
Processing	Analog	Analog	Analog
Frequency Response	60 Hz - 20 kHz	50 Hz - 20 kHz	45 Hz - 20 kHz
Max SPL	123 dB	124 dB	126 dB
Connectors	IN: Combo LINK: XLR M	IN: Combo LINK: XLR M	IN: Combo LINK: XLR M
Controls	LEVEL, PRESET selector (MONITOR, FOH), GND lift	LEVEL, PRESET selector (MONITOR, FOH), GND lift	LEVEL, PRESET selector (MONITOR, FOH), GND lift
Power Supply	230 VAC or 120 VAC 50/60 Hz	230 VAC or 120 VAC 50/60 Hz	230 VAC or 120 VAC 50/60 Hz
Stage Monitor Angle	36°	36°	36°
Cabinet	Plywood with black anti-scratch polyurethane paint	Plywood with black anti-scratch polyurethane paint	Plywood with black anti-scratch polyurethane paint
Pole Socket	1 x side	1 x side	1 x side
Handles	2 x side	2 x side	2 x side
Dimensions (W x H x D)	490x265x375 mm	510x310x440 mm	600x335x490 mm
Weight	12 kg (26.4 lb)	15 kg (33 lb)	21 kg (46.3 lb)

OPTIONAL ACCESSORIES



**CPWD10V2 - CPWD12V2
CPWD15V2**

Wedge series flight case (for 2 unit)

**COVERWD10V2
COVERWD12V2
COVERWD15V2**

Wedge series padded covers

SESSION 1X

SESSION1X is a **portable column sound system** that combines powerful performance with maximum versatility. Housed in ultra-light yet extremely durable polypropylene enclosures, the system features a column with **four high-definition 2.5" full-range speakers** paired with a deep and punchy **8" subwoofer**.

At its core lies state-of-the-art electronics: an **advanced DSP engine** for system processing and dynamic control and a powerful **2-channel 400W Class D amplifier**, ensuring clarity, headroom, and reliability in every situation.

The built-in **MEDIA PLAYER** offers seamless playback from a USB memory stick or directly from your smartphone or tablet via **BLUETOOTH**, completely cable-free.

For even greater flexibility, **SESSION1X** integrates a **3-channel mixer** with Independent level controls. Two mono channels allow microphones, instruments, or line sources to be connected and are equipped with a **2-band EQ** and **studio-grade digital reverb** for a polished, professional sound. A stereo input is available for media playback or other external sources.

SESSION1XFREE includes a **Li-ion battery** that provides up to 8 hours of mains-free continuous operation, for the maximum freedom of use.

Thanks to its versatility, portability and professional audio performance, **SESSION1X** and **SESSION1XFREE** are the ideal solution for a wide range of applications – from speech reinforcement and background music to live performances and DJ sets.



SESSION1X

SESSION1XFREE

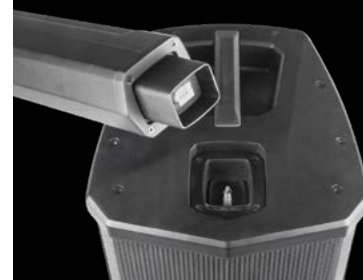


- Active portable column system
- Column with four high-definition 2.5" full-range speakers
- 8" long-excursion subwoofer
- Fast-linking system and integrated power connections to adjust the column to the desired height
- 2-channel 400 W peak Class D power amplifier with SMPS
- Advanced DSP engine for system processing and dynamic control
- Built-in 3-channel mixer with MIC/LINE inputs and 2-band EQ
- Studio-grade digital REVERB
- USB MEDIA PLAYER with BLUETOOTH audio interface with STEREO LINK function
- SPL MAX: 108 dB
- Frequency response: 50 Hz - 18 kHz
- Lightweight, compact and ultra-durable PP cabinet
- Padded bag for the 3-pcs column included
- 8000 mAh Li-ion battery (SESSION1XFREE)



A padded bag for the 3 pieces column speaker transportation is included.

	SESSION1X	SESSION1XFREE
MIXER SECTION		
MONO inputs	2 x MIC/GUITAR/LINE IN (COMBO)	
STEREO input	1 x LINE IN (MINI-JACK)	
Outputs	LINE OUT (XLR-M)	
MONO Channels EQ	High, Low	
Internal Effect	Digital REVERB	
MULTIMEDIA SECTION		
Player Type	USB / BLUETOOTH with STEREO LINK	
Compatible File Formats	MP3	
Control Interface	LCD display, CONTROL buttons	
AMPLIFIER Section		
Total Peak Power	400 W	
Continuous Power	200 W	
Amplifier Type	Class D	
Power Supply	SMPS	
Processing	DSP	
LOUDSPEAKER SECTION		
System Type	Compact powered column system with subwoofer	
High Frequency Device	4 x 2.5" (66mm) drivers	
Low Frequency Device	8" (200mm) woofer with 1.5" VC	
Angular Coverage	90° H x 60° V	
Frequency Response	50Hz – 18kHz	
Maximum SPL Output	108 dB	
GENERAL Specifications		
Construction	Polypropylene	
Cabinet Colour	Black	
Column system	3-pcs with fast-linking system and integral power connections	
Handles	1 x subwoofer top	
Accessories	Padded bag for 3-pcs column	
Dimensions (WxHxD)	SUB: 318x 400 x484.5 mm COLUMN (each piece): 520 X 84 X 97.5 mm	
Weight	14 Kg (complete system)	14.5 Kg (complete system)
Power Supply	100 V-240 V~ 50/60 Hz	
Rated Power Consumption	100 W	
BATTERY SPECIFICATIONS		
Battery Type	11.1 V , 8000 mAh , Lithium Battery	
Battery Life	8 - 10 hours	
Battery Charging Time	5 - 8 hours	



Fast-coupling system with integrated power signal link



Built-in 3-channel mixer and MEDIA PLAYER with SD/USB and STEREO BLUETOOTH connection



SESSION700

SESSION700 is a **compact, high-power portable array system built in an active 2.1 configuration**, combining two top units and one subwoofer. Designed to deliver professional performance with maximum flexibility, it integrates an innovative **8-channel digital mixer** that can be fully controlled remotely.

Each top unit is housed in a rugged aluminum enclosure and loaded with **six 2.75" neodymium drivers** arranged in a vertical array with a progressive down tilt. This advanced configuration expands vertical coverage while maintaining a wide 100° horizontal dispersion, ensuring crystal-clear voice intelligibility and perfectly even sound across the entire audience area. The subwoofer, built from sturdy plywood, features a **12" high-excursion woofer** with a 2.5" voice coil for tight, dynamic bass and extended low-frequency response with impressive SPL output.

At the heart of SESSION700 is a **3-channel 1400W Class-D amplifier** with a switch-mode power supply (SMPS), managed by a **32-bit DSP** for precision system control, protection, and crystal-clear sound at any level.

A unique die-cast fast-linking system with integrated connections lets the two top units combine into a single 12-driver column, making it quick and easy to switch between **STEREO and MONO setups** depending on your application.

The built-in **8-channel digital mixer** provides 4 selectable MIC/LINE/INSTRUMENT inputs, 2 stereo LINE inputs and a **Bluetooth** interface for seamless audio streaming. Each channel includes a 4-band parametric EQ and full-parameter compressor, while the master section offers a 7-band graphic EQ with five user presets and a studio-quality multi-effect processor.

You can control everything directly from the onboard interface — featuring a large LCD display and a single multifunction knob — or enjoy **full wireless control** via Bluetooth 5.0 Low Energy (BLE) using the **dedicated app for Android and iOS**. From speech reinforcement and background music to live performances, DJ sets, and corporate events, **SESSION700** delivers exceptional sound, versatile configuration, and effortless portability. For easy transport, the system includes a padded bag for the columns, as well as a pole and speaker cable, ensuring fast setup wherever your performance takes you.



SESSION700

Portable 2.1 active speaker system with two tops and a subwoofer

TOP

- Six 2.75" neodymium full-range speakers in a vertical array configuration
- Progressive speaker tilt for optimal vertical coverage
- Quick coupling system for the two tops, with integrated connections, to create a single 12-speaker column
- SPEAKON connector
- Standard 35mm stand adapter
- Aluminum cabinet with reinforced metal grille

SUB

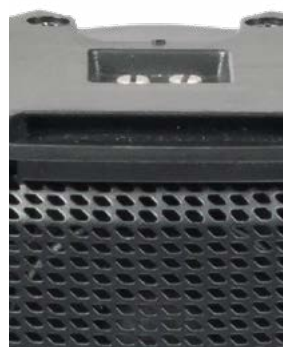
- 12" high-excursion speaker with 2.5" voice coil
- Plywood cabinet with ultra-durable polyurethane finish
- Two ergonomic handles
- Speaker stand adapter with M20 insert

MIXER/AMPLIFIER

- 3-channel Class D amplifier with SMPS
- Total peak power 1400W
- Configurable as a STEREO or MONO system
- 8-channel digital mixer with 5-band EQ and COMPRESSOR for each channel
- Studio-quality MULTIEFFECT
- 7-band graphic EQ with 5 presets for the MASTER
- Bluetooth 5.0 interface for audio streaming
- LCD display for local control
- REMOTE CONTROL of all parameters with APP for ANDROID and IOS tablets

SYSTEM

- MAX SPL (system): 126 dB peak
- Frequency response: 45 Hz - 18 kHz
- Accessories included: TOP pole with M20 mount, 4-core SPEAKON power cable (2 m), TOP carrying bag



Die-cast fast-coupling system with integrated power signal link



Padded bag for transporting the tops



8-channel digital mixer with 5-band EQ and COMPRESSOR for each channel

SYSTEM

System Type	Portable Powered 2.1 System with Two Column Tops and One Subwoofer
Maximum SPL Output	126 dB peak system output (pink noise)
Frequency Response (-10dB)	45Hz – 20kHz
Speakers	
LF Driver	1 x 12" (165mm) 2.5"VC woofer in VENTED configuration
HF Driver	12 x 2.75" (70mm) 1"VC neodymium drivers (6 for each TOP)
Coverage Pattern	100° x 50°

AMPLIFIER

Type	Class D with SMPS
System Power Rating	350 Watts LF Continuous, 2x175 Watts HF Continuous, 1400W System Peak
Channels	8-channel DIGITAL mixer
Connectors	6 x COMBO + 1 x STEREO MINIJACK (INPUTS), 2 x XLR-M (OUTPUTS), 2 x SPEAKON (POWER OUTPUTS)
Controls	1 x LCD with Data Encoder APP Remote Control
Processing	DSP
Wireless Audio	Bluetooth built-in receiver

GENERAL SPECIFICATIONS

Cabinet Material	SUB: plywood, TOPS: aluminium with die-cast fast linking system
Finishing	Black paint
Grille	Powder coated perforated steel
Handles	2 x sides (SUB)
Pole Socket	1 x top M20 (SUB), 1 x bottom 35mm (TOP)
Included Accessories	M20 / 35mm telescopic pole, 4-wire SPEAKON/SPEAKON cable, TOP carrying bag
AC input	230 VAC or 120 VAC 50/60 Hz with LINE VOLTAGE selector
Dimensions (W x H x D)	TOP: 95x47x121 mm, SUB: 350x514x500 mm
Weight	TOP: 2.5 kg (5.5 lbs), SUB: 22 kg (48.5 lbs), SYSTEM: 27 kg (59.5 lbs)

INCLUDED ACCESSORIES



SAT padded bag 4-wire speakon cable Telescopic pole

OPTIONAL ACCESSORIES



FRE300BK ESO1500LU10 COVERSESSION700

FREEONEX

All-in-one battery-powered personal PA system featuring multiple inputs and **BLUETOOTH** connectivity. Hosted in a compact, lightweight yet ultra-durable polypropylene cabinet with **multiple aiming positions**, it represents the perfect solution for musicians, DJs and general PA users. An array of **three high-definition 2" HF speakers** coupled with a **powerful 6" LF woofer** provides a consistent tonal balance, a strong output level over distance and a wide coverage of large audiences. The **state-of-the-art electronics** includes a sophisticated pre-amp section with DSP processor and a powerful **150W + 50W Class D** power amplifier. The built-in 2 mono + 1 stereo channel **digital mixer** allows to connect **two microphones or instruments** and a stereo player, each one with independent level controls. A 2-band EQ and a studio-grade **digital REVERB** is also available for microphone/instrument inputs.

The built-in **BLUETOOTH** connection allows to stream high quality audio from portable devices without the need of any cable.

The **built-in Li-ion battery** provides up to **10 hours** of mains-free continuous operation, for the maximum freedom of use.



FREEONEX FREEONEXWH

- 3 CH mixer with 2 x MIC/GUIT/LINE IN and 1 x STEREO LINEIN
- Two band EQ for channel 1 and 2
- Studio grade Digital REVERB
- LINE OUT for connecting an additional P.A. system
- Stereo BLUETOOTH interface
- USB port for external devices charging
- High performance Lythium Ion battery powered



FREEONEX

System type	2-way vented enclosure with HF array
High Frequency Device	3 x 2 in
Low Frequency Device	1 x 6 in
Frequency response (-3 dB)	60 Hz – 18 kHz
Max. SPL	115 dB
Coverage angle (H x V)	120° x 50°
Total peak power	400 W
HF continuous power	50 W class D
LF continuous power	150 W class D
Input Connectors	2 x XLR/TRS Combo (balanced) 1 x 3.5mm Jack Stereo
Output Connectors	1 x 6.35mm Jack (unbalanced) 1 x USB type A Charge port
Input Channels	2x MIC/LINE 1x LINE/BT
Mic/Line Controls	Reverb, Low, High, Level
Stereo in/Bluetooth Controls	Pair, Level
Processing	32bit DSP, 24bit AD/DA
Bluetooth	Protocol 5.0, Audio Streaming
Enclosure material	Polypropylene
Finish	Black Textured
Grille material	Powder coated steel
Handles	1 x top
Mounting Pole	1 x bottom
Dimensions (H x W x D):	320 mm x 240 mm x 290 mm 12.59 in x 9.45 in x 11.42 in
Weight	7.5 kg 16.53 lb
USB charging	2 A max
Power Supply	100 – 240 V~, 50 / 60 Hz
Consumption	150 W
Battery type	Rechargeable Lithium-ion 6000mAh
Battery play time (at medium level)	up to 10 hours
Recharging time	less than 4 hours



Vertical angle positioning



Standard 35 mm pole

OPTIONAL ACCESSORIES



COVERFREEONEX



FREEPROX

FREEPROX is an **all-in-one, battery-powered PA system** featuring multiple inputs, **BLUETOOTH** connectivity, **USB PLAYER/RECORDER**, onboard DSP with two effects processors and remote control via a dedicated **Android and iOS app** for smartphones and tablets.

Housed in a compact, lightweight yet ultra-durable polypropylene cabinet with multiple aiming positions, FREEPROX is the ideal solution for anyone needing an **extremely portable, powerful, and mains-independent sound system**. It is perfect for musicians, street performers, presenters, and anyone who needs to amplify voice or music in a wide variety of locations while on the move.

The coaxial speaker design combines a **high-definition 1" HF compression driver** with a powerful **6.5" LF woofer**, delivering balanced and coherent sound, strong projection over distance, and wide audience coverage.

The state-of-the-art electronics include a sophisticated preamp section with DSP processing and a powerful **400W Class D amplifier**. The integrated 3-channel digital mixer allows connection of two microphones or instruments plus a stereo device, each with independent level control. The mic/instrument inputs feature a **3-band EQ** and **studio-grade dual digital effect** including reverb, echo, delay, chorus, and flanger.

The built-in **BLUETOOTH audio interface** with STEREO LINK (TWS) capability enables high-quality wireless streaming from portable devices without cables. A **USB PLAYER/RECORDER** allows to play audio track from a USB flash memory and even to make a high-quality recording of your gig on it.

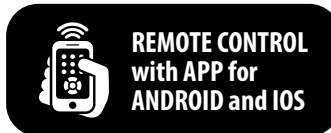
A color LCD display and multifunction control knobs provide intuitive, direct access to all mixer parameters. Full wireless control is also available via Bluetooth 5.4 Low Energy (BLE) using the dedicated **app for Android and iOS devices**.

The integrated **Li-ion battery** delivers up to **10 hours** of continuous operation, ensuring maximum freedom and true mains-free performance wherever you need it.

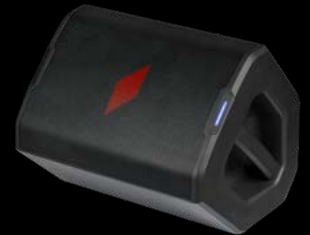


FREEPROX

- Coaxial speaker with 6.5" woofer and 1" compression driver
- 90° x 60° wide coverage
- 400W peak power amplifier
- 3-channel DIGITAL mixer with input selection and EQ controls
- Studio-quality DUAL DIGITAL EFFECT with REVERB/ECHO/DELAY and CHORUS/FLANGER
- BLUETOOTH 5.0 audio streaming with STEREO LINK (TWS)
- MP3 player/recorder on USB flash drive
- LCD color display with DIAL for local control
- REMOTE CONTROL with APP for ANDROID and IOS
- Rechargeable, replaceable Li-ion battery with up to 10 hours playtime
- Multi-position lightweight and rugged PP cabinet with reinforced metal grille



3-channel DIGITAL mixer with EQ controls and studio-quality DUAL EFFECT



Multi-position PP cabinet

TECHNICAL SPECIFICATIONS	FREEPROX
System type	2-way vented enclosure
High Frequency Device	1x 1" compression driver coaxial
Low Frequency Device	1 x 6.5" woofer
Frequency response (-3 dB)	60 Hz - 20 kHz
Max. SPL	115 dB
Coverage angle (H x V)	90° x 60°
Total peak power	400 W
HF continuous power	50 W class D
LF continuous power	150 W class D
Input Connectors	2 x XLR/TRS Combo (balanced) 1 x 6.35mm Jack (balanced) 1 x 3.5mm Jack Stereo 1 x USB-A for PLAYER/RECORDER
Output Connectors	1 x 6.35mm Jack (balanced) 1 x 3.5mm Jack Stereo (headphones) 1 x USB-C charge port
Input Channels	2x MIC/LINE 1x BT /USB / STEREO LINE / MONO LINE
Controls	LCD Main DIAL CH1/2/3 DIAL CH1/2 GAIN Headphones level USB PLAY/REC
Processing	DSP
Bluetooth	Protocol 5.4, Audio Streaming, BLE control
Control APP	Android, Apple
Enclosure material	Polypropylene
Finish	Black Textured
Grille material	Powder coated steel
Handles	1 x top
Mounting Pole	1 x bottom
Dimensions (H x W x D):	330 mm x 246 mm x 278 mm 12 in x 9.7 in x 11 in
Weight	6.8 kg 15 lb
USB charging	2 A max
Power Supply	100 - 240 V~, 50 / 60 Hz
Consumption	75 W
Battery type	Rechargeable Lithium-ion 5200mAh
Battery play time (at medium level)	up to 10 hours
Recharging time	less than 4 hours



LCD color display with DIAL for local control



BLUETOOTH 5.0 audio streaming with STEREO LINK (TWS) and MP3 player/recorder on USB flash drive

OPTIONAL ACCESSORIES



COVERFREEPROX

Alphabetical Index

CODE	PAGE	CODE	PAGE	CODE	PAGE
BAGDIGIPAD8	14	DIVA15A	31	LTX8PWV2	38
BAGMQ1222X	9	DIVASUB18A	32	LTXSUB10A	41
BAGMQ1642X	10	ESO1500LU10	53	LTXSUB10P	41
BAGPLAYMIX10	6	FRE300BK	53	MQ1222X	9
BAGPLAYMIX6	5	FREEONEX	55	MQ1642X	10
BAGPLAYMIX8	5	FREEONEXWH	55	PLAYMIX10	6
COVERDIVA12	31	FREEPROX	56	PLAYMIX6	5
COVERDIVA15	31	KPTFLDIVA12	31	PLAYMIX8	5
COVERFREEONEX	55	KPTFLDIVA15	31	RACKMQX12	9
COVERFREEPROX	57	KPTLT10	37-39	RACKMQX16	10
COVERS10	45	KPTLT10W	37-39	S10A	44
COVERS12	45	KPTLT12	37-39	S12A	44
COVERS15	45	KPTLT12W	37-39	S15A	43
COVERS18	45	KPTLTP	37-39	S18A	43
COVERSESSION700	53	KPTLTPW	37-39	SESSION1X	51
COVERV10	21	KPTV10	21	SESSION1XFREE	51
COVERV10FW	23	KPTV12	21	SESSION700	53
COVERV10FW	24	KPTV15	21	U24B	27
COVERV12	21	KPTV8	21	U24B	31
COVERV12FW	23	LTX10AV2	37	U24H	27
COVERV12FW	24	LTX10AVV2	37	V10FREE	24
COVERV15	21	LTX10PV2	39	V10PRO	20
COVERV8	21	LTX10PWV2	39	V10WAVE	23
COVERWD10V2	49	LTX12AV2	37	V12FREE	24
COVERWD12V2	49	LTX12AVV2	37	V12PRO	21
COVERWD15V2	49	LTX12PV2	39	V12WAVE	23
CPWD10V2	49	LTX12PWV2	39	V15PRO	21
CPWD12V2	49	LTX6AV2	36	V8PRO	20
CPWD15V2	49	LTX6AVV2	36	WD10AV2	49
D10A	17	LTX6PV2	38	WD12AV2	49
D10P	17	LTX6PWV2	38	WD15AV2	49
D20P	17	LTX8AV2	36	WX10A	47
DIGIPAD8	14	LTX8AVV2	36	WX8A	47
DIVA12A	30	LTX8PV2	38		

• Tutte le specifiche possono essere variate senza alcuna notifica • Design and specifications subject to change without any notice

• E' vietata la riproduzione fotostatica e fotografica del presente catalogo, o di parti di esso, in mancanza di espressa autorizzazione da parte di Proel S.p.a.
• The photostatic and photographic reproduction of this catalogue, in whole or in part, is strictly prohibited without the prior written consent of Proel S.p.A





SSCAT26IE

www.soundsystemsproel.com

PROEL **SOUND SYSTEMS**

PROEL SPA

(Worldwide Headquarters)
Via alla Ruenia, 37/43
64027 Sant'Omero (TE) - ITALY
Tel. +39 0861 81241
Fax +39 0861 887862
P.I. 00778590679
N.Reg.AEE IT 08020000002762

UK

Proel International Ltd.
London

USA

Proel North America Inc.
Los Angeles

TUNISIE

Proel Tunisia Sarl
Tunisi

KOREA

Proel Korea Co. Ltd.
Gyunggi-Do

info@proel.com
www.soundsystems.proel.com

